



# JOURNAL OF ANCIENT HISTORY AND ARCHAEOLOGY

Institute of Archeology and Art History of  
Romanian Academy Cluj-Napoca  
Technical University Of Cluj-Napoca



# Journal of Ancient History and Archaeology

DOI: <http://dx.doi.org/10.14795/j.v10i4>

ISSN 2360 266x

ISSN-L 2360 266x



Scopus®



Clarivate  
Analytics



Central and Eastern European Online Library



**No. 10.4/2023**



# CONTENTS

## STUDIES

### ANCIENT HISTORY

**Stanislav GRIGORIEV**  
INDO-EUROPEANS IN ANCIENT ANATOLIA ..... 5

**Aleksandra KUBIAK-SCHNEIDER**  
ALLĀT AND THE DESERT "KULTLANDSCHAFT"  
OF ALLĀT IN THE EAST ..... 32

### ARCHAEOLOGY

**Mohsen Heydari DASTENAEI, Kamal Adin NIKNAMI**  
APPLICATION OF MORAN'S I STATISTICS IN SPATIAL  
ANALYSIS OF ARCHAEOLOGICAL SITES OF THE  
SARFIROUZABAD PLAIN, CENTRAL ZAGROS, IRAN ..... 41

**Francisco J. ESQUIVEL**  
STATISTICAL PATTERN ANALYSIS OF ROMAN VILLAE  
IN ANDALUSIA FROM QUALITATIVE MULTISTATE  
VARIABLES ..... 55

**Davut YİĞİTPAŞA**  
RE-ASSESSMENT OF THE CLAUDIOPOLIS STADION  
RESCUE EXCAVATION IN 2008 ..... 64

### ARCHAEOLOGICAL MATERIAL

**Cristian Ioan POPA**  
THE BRONZE AXE FROM MIHALŢ (ROMANIA)  
AND SOME PROBLEMS RELATED TO HYBRID  
"LARGA" TYPE AXES ..... 86

**Ioana Mihaela POTRA**  
OLIVE OIL IMPORTS ON THE NORTH-WESTERN  
DACIAN LIMES: THE CASE OF POROLISSUM ..... 114

**Ahmad DAWA**  
ADDITIONAL ELEMENTS ON CANONICAL CORINTHIAN  
CAPITALS IN SYRIA ..... 125

**Dana KHOULI**  
REPRESENTING THE HOLY GRAIL ON RELIQUARY  
SARCOPHAGI IN SYRIA ..... 133

### ARCHAEOLOGICAL TOPOGRAPHY

**Florin-Gheorghe FODOREAN**  
MAPS OF ROMAN DACIA. V. LUIGI FERDINANDO MARSIGLI  
AND ROMAN DACIA IN 1726 ..... 138

### NUMISMATICS

**Silviu I. PURECE**  
BETWEEN ARCHAEOLOGY AND METAL DETECTING,  
ANCIENT COINS FROM OCNİŢA-BURIDAVA ..... 142

**Marius-Mihai CIUŢĂ, George Valentin BOUNEGRU**  
AN ANCIENT COIN HOARD DISCOVERED,  
FORGOTTEN, REDISCOVERED AND RECOVERED.  
THE JIDVEI HOARD CASE ..... 161

## REVIEWS

**Matthew Gray MARSH**  
IRFAN HABIB & VIVEKANAND JHA. MAURYAN INDIA.  
9TH EDITION. A PEOPLE'S HISTORY OF INDIA VOL. 5.  
NEW DELHI: TULIKA BOOKS, 2019, X + 189P,  
ISBN 978-93-82381-62-4. .... 172

Design & layout:  
Petru Ureche



### RE-ASSESSMENT OF THE CLAUDIOPOLIS STADION RESCUE EXCAVATION IN 2008

**Abstract:** Bithynion (Bolu), one of the important cities of the Bithynia Region, was on an important route from Nicomedia to Pontus and Paphlagonia regions. The city stands out during the reign of Emperor Hadrian (117-138 AD). Emperor Hadrianus, declaring Antinoos as the protector of the city, orders a temple to be built on it and for this reason, ceremonies and competitions are held here every five years. Various remains were encountered during the demolition of the shops belonging to the Bolu Municipality, located in the Akpınar Neighbourhood of Bolu province, Merkez District, in 2008. A total of 113 boreholes measuring 1x1.5 m were drilled with depths varying per the filling soil and at a distance of 1.5 m from each other. With the excavations and drillings in 2008, M. Y. Güneş revealed new information and documents and published the results of the research and investigations in the excavation report. Although the stadium is in excellent condition, the details of its architectural typology and technical features were not known accurately and entirely until recently. This review evaluates the new evidence unearthed in the stadium during the work of 2022, taking into account the 2008 excavation report and finds.

**Keywords:** *Bolu, Stadion, Claudiopolis, Bithynia Region, Hadrianus.*

**Davut Yiğitpaşa<sup>1</sup>**

Ondokuz Mayıs University  
davut.yigitpasa@omu.edu.tr

DOI: 10.14795/j.v10i4.969  
ISSN 2360 – 266X  
ISSN-L 2360 – 266X

#### INTRODUCTION

**B**ithynia is bordered by Rhyndakus (=Kocaçay) in Mysia in the west, Phrygia and Galatia in the south, Pontus Euxenus (=Black Sea) in the north, and, though not certain, Herakleia Pontika (=Ereğli) in the east<sup>2</sup>. Bithynion (Bolu), one of the important cities of the Bithynia Region, was on an important route from Nicomedia to Pontus and Paphlagonia regions<sup>3</sup>.

Furthermore, the city had fertile plains and water resources. Strabon stated that the Salona (Bolu) Plain, lying in front of the hill on which the Claudiopolis city was founded, was highly suitable grazing land for animals<sup>4</sup>, while Plinius said the city was located in Inner Bithynia and that the city was also famous for its cheese<sup>5</sup>. The city is located under the modern city center, dominating the Bolu Plain, at an altitude of 715 m, spread over an

<sup>1</sup> \* ORCID: <https://orcid.org/0000-0001-8821-5628>.

<sup>2</sup> STRABON XII. 4.1. UMAR (1986) states the borders of Bithynia in the First Age as the region bounded by the Black Sea in the north, the Bosphorus and the Marmara Sea in the west, the Filyos (Billaios) river in the east, and the Orhaneli (Rhyndakos-Atranos) in the south.

<sup>3</sup> SEVİN 2001, 39.

<sup>4</sup> STRABON XII, IV, 7.

<sup>5</sup> STRABON XII, IV, 7.

area of 2000 m from east to west from the city center and 750 m from north to south, including Hisartepe, Kargatepe, Firkatepe (Hıdırlıktepe) and Uğurluanip hills (Fig. 1-2)<sup>6</sup>.

It has been determined that the city's history goes back to the 7th century BC at the earliest. The city, considered to have been captured by the Bithynia King Nikomedes I (278-255)<sup>7</sup> in the Hellenistic period and annexed to the Bithynia Kingdom, was reconstructed during this period, and the city was named Bithynium. It is one of the easternmost settlements of Bithynia<sup>8</sup>. The city became a polis during the Prusias Period (227-182 BC). Apart from the pottery fragments from the Late Hellenistic Period found in the 1978 Hisartepe excavation, no other finds from the Bithynia Kingdom Period have been found in the city so far. The city, which is one of the 12 important cities of the region, came under Roman domination in 74 BC, was called Claudiopolis since the Julio-Claudian dynasty, and started to mint coins by gaining civitas status with Lex Pompeia<sup>9</sup>. The provincial governor of Bithynia continued to mint bronze coins in 47 BC during the reign of Gaius Vibius Pansa<sup>10</sup>. As we learn from ancient writers and the expressions on coins, the city was called Bithynion until the Roman Republic Period<sup>11</sup>. The city's name is mentioned as Bithynium-Claudiopolis in the *Historia Naturalis*, written by the ancient writer Plinius the Elder<sup>12</sup> in 77 AD. It is understood that Emperor Claudius (41-54 AD) worked hard for the city during the Roman Empire period. The city's people changed the city's name to Claudiopolis to express their gratitude to the Emperor<sup>13</sup>. As a civitas, Bithynium has a boule where urban issues are discussed and decided<sup>14</sup>. Moreover, the inscriptions mention gymnasiarchs commissioned in the city<sup>15</sup>. Although the city's name was changed to Hadrianon Claudiopoleion during the reign of Emperor Hadrianus (117-138)<sup>16</sup>, the name Claudiopolis continued to be used among the people<sup>17</sup>.

The city stands out during the reign of Emperor Hadrian (117-138 AD). Researchers attribute the reason for the privileges given to the city to the fact that Antinoos, the favorite of the Emperor, being born in this city. The city was, therefore, probably named Hadrianon Kladiopoleiton<sup>18</sup>. This must also be the reason for the inclusion of Antonoos on the city coins minted during this period<sup>19</sup>. In addition, Pausanias states that Emperor Hadrian declared Antinoos as the city's protector and ordered a temple to be built, and therefore, ceremonies and competitions are held here every five years, and the origin of the city's people are Arkadians and

Mantineians<sup>20</sup>. The city was the capital of Honorias Province in 384 AD<sup>21</sup> and became one of the seventy military cities<sup>22</sup>. During the Byzantine Period, the city lost its importance to a large extent and began to be ruled by proconsuls<sup>23</sup>.

The Greeks and Romans, who were often looking for a suitable natural slope or ground in the construction of theaters and stadiums, built their facilities on an area obtained by partially deepening the soil surface and partially by using vaults. Stadion (Stadium), a word of Greek origin, are venues where sports competitions and competitions were held, with a single or double-sided seating arrangement generally based on topographic benefit. Stadions are rectangular, semicircular ("U" form-single sphenodoned), or double sphenodoned structures. The "stadion," a 600-foot unit of length (1/8 of a Roman unit), is approximately 165-210 m away, with an average of 190 m.<sup>24</sup>

Before the stadions gained an architectural identity, they were structures requiring little financial support and suitable for running races on a flat field, with no sitting area but two long earthen embankments for the spectators to watch the race uninterrupted<sup>25</sup>. There have been structural changes in the stadions throughout their historical development. Later, their shape was transformed into a tribune using wooden piers, sometimes based on the city walls, with seats made of wooden constructions<sup>26</sup>. The construction of seatings in stadions began in the 3rd century BC.<sup>27</sup> The first known example among the Hellenic stadions is the Olympia Stadion<sup>28</sup>. It has a starting line to the east for running races called hyspylex-balbis<sup>29</sup>. The main entrance for athletes in the Olympia Stadion, called the crypt, was made of arches during the Roman period and decorated with sculptures<sup>30</sup>. In this period, costly stone stadions became a source of pride for the cities. Wooden seats, considered to have existed in the primitive stadions examples of the early periods, were changed in the examples of the Imperial Period and further developed by building stone seats on vaulted arches or constructing rows of stone seats on suitable grounds. Most popular structures in this period were built using advanced engineering knowledge. Sardes and Perge stadions are the best examples of structures built using domed vaults. Both of these stadions were built on flat ground, with the spectator stands completely seated on domed vaults<sup>31</sup>.

With the development of architectural techniques, the stadion consists of five main sections: The gallery, tribune, podium, entrance structure, and analemma. I believe providing the definitions of the sub-sections of these sections is essential to comprehend the subject. Galleries are

<sup>6</sup> YALMAN 1986, 435.

<sup>7</sup> PLINIUS *nat.* V 148; "... *ceterum intus in Bithynia colonia Apamena, Agrippenses, Iuliopolitae, Bithynion...*"; HARRIS-RYDE 1980, 880; JONES 1971, 151.

<sup>8</sup> STRABON XII, 4.7; HARRIS-RYDE 1980, 880.

<sup>9</sup> RG, 268, nr. 1-3 (Bithynium-Claudiopolis); BECKER-BERTAU 1986, 2; WILCKEN 1897, 542.

<sup>10</sup> MACRO 1980, 665.

<sup>11</sup> PLINIUS *nat.* V, 149; STRABON XII, 565; WORT 1889, 117.

<sup>12</sup> PLINIUS IX, 1938-1971.

<sup>13</sup> HARRIS-RYDE 1980, 880; MAREK 2003, 45.

<sup>14</sup> JONES 1971, 159; MAGIE 1950, 1231, nr. 34.

<sup>15</sup> DÖRNER 1941, nr. 126.

<sup>16</sup> RE III.1 1897, 542; BECKER 1986, 1.

<sup>17</sup> MAREK 2003, 31-32.

<sup>18</sup> HARRIS-RYDE 1980, 895; MAREK 2003, 74-80.

<sup>19</sup> RG 270, nr. 13-18; DIO CASS. LXIX 11.2.

<sup>20</sup> PAUS. VIII, 9.7.

<sup>21</sup> BINGHAM 1834, 329.

<sup>22</sup> KAN ŞAHİN 2019, 23.

<sup>23</sup> UMAR 1986, 37.

<sup>24</sup> SALTUK 1997, 163.

<sup>25</sup> ÇOKSOLMAZ 2022a.

<sup>26</sup> HÖCKER 2001, 888; UZUNASLAN 2010, 12.

<sup>27</sup> ÇOKSOLMAZ 2022a, 22.

<sup>28</sup> KIURI 2015, 2.

<sup>29</sup> Hysplex must have been used for horse competitions in general VALAVANIS 1999, 5.

<sup>30</sup> KIURI 2015, 4.

<sup>31</sup> UZUNASLAN 2010, 12.

the uppermost section surrounding the structure, consisting of different building levels. These are sections where viewers from above enter the building, mainly for the standing viewers. Tribunes are situated under the galleries. They are located on the two long sides of the building, defined as a horseshoe or "U" plan, and the half-round part is called "sphendone." Kerkis are the rows of seats for the audience in between the stairs to reach them, and diazomas separating these rows horizontally. They form the main elements of the tribunes. Kerkis are separated by passages defined as upper diazoma, middle diazoma, and lower diazoma. The middle diazoma divides the tribunes (cavea) into lower and upper caveas. The audience section is divided by stairs called keile, similar to the theater. Below, in front of the tribunes, is the podium that supports the large mass on which the galleries and tribunes sit and allows it to rise from the arena. The podium diazoma (pedalion) is divided by the stairs between the kerkis, which enable them to reach the arena. Thus, the podium is divided into sections as wide as the kerkis. The arena is where the sporting competitions are held. Some contests start at the monumental "Hysplex Entrance Structure," which is directly opposite the sphendone and provides entrance to the arena. The walls supporting the facades of the tribunes are called analemma. In some stadion examples, proedria are situated at the top of the kerkis in the galleries<sup>32</sup>. There are different examples of stadions converted into architectural structures.

Stadions in Anatolia were built in the middle of two slopes (Laodikeia Stadion)<sup>33</sup> by making use of a single slope (Arykanda Stadion)<sup>34</sup> or by carving on rocky land (Anazarbos Stadion)<sup>35</sup>. There is also a structure from the Roman Period (Perge Stadion)<sup>36</sup> raised on a vault on a flat land as part of applications where topographic reasons were ignored. Within the plans, stadions are primarily rectangular (Olympia Stadion)<sup>37</sup>. There are U-planned Magnesia Meandrum<sup>38</sup> and Kibyra<sup>39</sup> Stadions with a single sphendon and amphiteatron-planned Aphrodisias<sup>40</sup> and Laodikeia<sup>41</sup> Stadions with double sphendones<sup>42</sup>.

Reaching a rapid growth trend during the Imperial Period, expensive and enormous public buildings were soon built all over Claudiopolis. One of the most striking structures is the stadium. The Claudiopolis stadium, constructed to give comfortable viewing pleasure to a large number of spectators, is one of the rare structures to have survived to the present day despite all the destructive events. Ancient sources inform us about earthquakes in the Bithynia Region during the Roman Period<sup>43</sup>. Texier (II., 36) stated that the city was utterly destroyed in one of the great earthquakes that devastated the region. In terms of topography, style,

and aesthetics, it set a perfect example for similar buildings built in Anatolia during the Imperial Period. Therefore, it has not escaped the attention of many travelers who came to Anatolia since early times<sup>44</sup>.

As for the city, the following were found during 1978 Bolu/Hisartepe excavations: The Hadrianus Temple<sup>45</sup>; the stadion, a mosaic Flat, monumental structure, and Roman road remains on the southern slopes of Hisartepe; a theater in the south of Firkatepesi; and the agora and statues<sup>46</sup> on Kargatepesi. The architectural remains revealed that the settlement area of the city of Claudiopolis was located on these three hills. Columns, architraves, and frieze fragments belonging to the Temple of Hadrian and fragments of the epitaph frieze belonging to the stadion are exhibited in the Bolu Museum (Fig. 1).

With the excavations and drillings in 2008, M. Y. Güneş revealed new information and documents and published the results of the research and investigations in the excavation report. Although the stadion is in excellent condition, the details of its architectural typology and technical features were not known accurately and entirely until recently. This review evaluates the new evidence unearthed in the stadion during the work of 2022, taking into account the 2008 excavation report and finds.

#### **BOLU/CLAUDIOPOLIS STADION EXCAVATION**

Various remains were encountered during the demolition of the shops belonging to the Bolu Municipality, located in the Akpınar Neighbourhood of Bolu province, Merkez District, in 2008. Therefore, drilling was carried out in 2008 in layout 9, block 248, plots 15, 16, 17, and 18 within the third-degree Archaeological Site with the permission of the Ministry of Culture and Tourism General Directorate of Cultural Heritage and Museums and under the chairmanship of the Bolu Provincial Directorate of Culture and Tourism and Museum Directorate (Fig. 2-7)<sup>47</sup>. A total of 113 boreholes measuring 1x1.5 m were drilled with depths varying per the filling soil and at a distance of 1.5 m from each other (Fig. 8-10). During the drilling, 28 boreholes were opened in plots no. 15, 23 in plot no. 16, 33 in plot no. 17, and 29 in plot no. 18. Wall remains were found in boreholes no 16, 21 (Fig. 12), and 22 in plot no. 15. Sitting rows were identified in borehole no. 16 in plot 16; in boreholes no. 16, 24, 25, 26, 27, and 28 (Fig. 11) in plot 17; and in borehole no. 24 (Fig. 13) and 25 in plot 18 (Fig. 14)<sup>48</sup>. A rescue excavation was initiated due to the rows of seats and wall remains found in the drillings in layout no 9, block no 248, plots no 15, 16, 17, and 18 belonging to the stadion: A wall remains was

<sup>32</sup> BINGÖL/KÖKDEMİR/ORAL 2008, 124.

<sup>33</sup> ŞİMŞEK 2005, 30-34.

<sup>34</sup> BAYBURTLUOĞLU 2003, 106-110.

<sup>35</sup> GOUGH 1952, 100-101.

<sup>36</sup> LANCKORONSKI 2005, 46, 55.

<sup>37</sup> KIURI 2015, 4.

<sup>38</sup> BINGÖL ET AL 2008, 119-144.

<sup>39</sup> DÖKÜ/KAYA 2013, 177- 203.

<sup>40</sup> UZUNASLAN 2010, 11-42.

<sup>41</sup> ŞİMŞEK 2005, 30-34.

<sup>42</sup> ÇOKSOLMAZ 2022a, 24.

<sup>43</sup> ŞAHİN 2013, 1-16.

<sup>44</sup> For the works of the relevant travellers, see PERROT 1872; TEXIER 1997.

<sup>45</sup> YALMAN 1981, 435.

<sup>46</sup> ÖZGAN 1997, 155.

<sup>47</sup> GÜNEŞ 2010, 159-173; 2011, 294-308. I commemorate with gratitude the Director of Museum Mustafa Y. Güneş, experts Kader Yer, Beste Ekşi, Ümit Karataş and Hakan Ulutürk, who carried out the 2008 rescue excavation with great devotion and meticulousness. I would like to thank the Director of Culture Hakan Doğanay and the Director of Museum Atılğan Kaya, who gave the excavation data, documents, photographic archive and permission to work on the finds, enabled the excavation to start again in 2022, and made great sacrifices.

<sup>48</sup> GÜNEŞ 2010, 159.

unearthed in the northern part of plots no 15, 16, and 17; a foundation remains of a structure in the middle part of plot no 15; and a stadion in the southern parts of plots no. 15, 16, 17, and 18. Expropriation works were carried out, and the excavation area was expanded, as the stadion unearthed in the plots above continued towards the east and west plots. Thus, the stadion was unearthed with all its extensions through the salvage excavations in layout no 9, block no 248, plots no 42-43-61, and 64<sup>49</sup>.

## STADION

The stadion, which leans on the southern slope of Hisartepesi, the acropolis of the city of Claudiopolis, was built during the reign of Emperor Hadrianus (117-138 AD). Extending in the east-west direction, the stadion sits on layout no 9, block no 248, plots no 15, 16, 17, 18, 42, 43, 61, 64, a total of eight plots, as mentioned above. Although the exact size of the building is unknown since it is located in a residential area, the length of the part with the inscription plates on the front side and separating the spectator section and the running track was measured as 93.20 m in 2008. This is the longest known part of the structure<sup>50</sup>. During the 2022 excavations, the continuation of the stadion was tracked where the concrete embankment built by the municipality is located in the southwest corner extending in a curved way towards İzzet Baysal Street, and it was determined to be 94.50 m long. It consists of 5 parallel rows of seats with different lengths (Fig. 15). The spectator capacity cannot be estimated as the top row of seats has not yet been determined<sup>51</sup>. The top row of seats on the northern edge is 23.98 m long. The length of the 2nd row of seats is 36.80 m, the 3rd row is 39.86 m, the 4th row is 45.88 m, and the 5th row is 77.25 m. The seating rows are 39-40 cm high and 73-74 cm deep and divided into keiles (kerkis) with stair sections descending in the north-south direction. The least damaged part of the stadion that has survived to the present day has 14 steps, each with 74 cm width. The number of keiles (seat section between kerkis and steps) uncovered in the stadion is 15 (Fig. 16-19)<sup>52</sup>.

The scientific excavations of 2022<sup>53</sup> evinced that the seat rows descending in the north-south direction were divided into 16 keiles, not 15. The number of steps identified in the widest part of the stadion is 14. Seven steps in the 1st

row of stairs at the southwest end, nine steps in the 2nd, 12 steps in the 3rd, 14 steps in the 4th, 5th, 6th and 7th, 12 steps in the 8th, six steps in the 9th, 10th, 11th, 12th, 13th and 14th, and five steps in the 15th and last row (northwest tip) have been preserved (Fig. 20). Although the first row of seats, which is 94 cm deep from the balustrade wall, was reported as 77.25 m in the 2008 excavation, so it has been determined that it is 75.37 m in dimensions and damaged in the last 14 years. The 2nd row of seats is 45.85 m, the 3rd is 39.83 m, the 4th is 36.78 m, and the top 5th row is 23.97 m long.

The stadion, an architectural masterpiece in terms of typology, construction technique, and functionality, is observed as one-sided on the slope. The scientific study on the stadion in 2022 revealed that the slope on which the rows of seats are based somehow continues. I consider that the stadion was built in the 'U' plan type with a sphendoned (semicircular)<sup>54</sup> turning section. However, the publications about the city reported that Claudioapolis had two theaters and a stadion. There are cities in Anatolia, such as Laodikeia and Apameia Kelanai, which house two theaters and a stadion. In a similar situation, it is possible that a massive building with sphendones might not have been needed in Claudiopolis. However, it should not be forgotten that the south spectator tribune of the stadion and a part of the running track were destroyed during the expansion of Gerede Street in 1933/34 and 1972 due to road construction and building constructions. B. Yalman stated that some seat rows and various architectural pieces were exposed during the street excavation work in 1972, approximately 150 m east of the stadion, and provided photographs and drawings of the ruins<sup>55</sup>.

Examining the architectural elements of the building after this destruction, N. Fıratlı stated that the diazoma and sitting steps belong to the theater cavea, and the architectural blocks decorated with garlands and the inscribed architrave belonged to the stage building of this theater<sup>56</sup>. Afterward, F. Becker-Bertau supported N. Fıratlı and defined the building as a theatre<sup>57</sup>. N. Fıratlı and F. Becker-Bertau mistakenly identified the building as a theater and stated that the destroyed remains belonged to a second theater in Claudiopolis. However, an evaluation of the photographs in these publications suggested that the destroyed benches may be the eastern extensions of the stadion unearthed during the salvage excavation.

## STADION EPITAPH

The building epitaph found during the excavation provides essential information about the stadion. The approximately 20 m long construction inscription is placed on four panels on the 1 m high balustrade wall separating the running field from the northern spectator tribune in

<sup>49</sup> GÜNEŞ 159, 2010. Akpınar Neighbourhood, registered as a 1st degree archaeological site by the High Council for the Conservation of Cultural and Natural Heritage in November 2008, is located in the area where the stadion remains are located, covering block no 248, plots no 61-43-42-18-17-16-15 and 64. The preliminary project prepared by the Bolu Municipality officials was approved with the letter of the General Directorate of Cultural Heritage and Museums dated 23.02.2018 and numbered 166943 and approved by the Board decision dated 05.09.2019 and numbered 6878.

<sup>50</sup> GÜNEŞ 2010, 160-161; BİLİR/TUNA 2022, 1230.

<sup>51</sup> Estimated capacity is calculated by predicting an average area of 0.50 cm for each spectator. The largest have a capacity of about 30.000.

<sup>52</sup> GÜNEŞ 2010, 160-161; BİLİR/TUNA 2022, 1230.

<sup>53</sup> Bolu/Claudiopolis Stadion Excavations restarted on 21.07.2022 with the permission of the Ministry of Culture and Tourism, General Directorate of Cultural Heritage and Museums, under the presidency of Bolu Provincial Directorate of Culture and Tourism and Museum Directorate, under the coordination of Assoc. Prof. Davut YİĞİTPAŞA. Although the excavation and findings will be evaluated in another article, I believe it would be useful to share some data here.

<sup>54</sup> The purpose of shaping the narrow faces of the stadion in the form of a semicircle (moon) was to provide a better quality view for the audience. Apart from Claudiopolis, this architectural style, which was applied in stadions such as Aphrodisias, Laodikeia, Nikopolis, and Nysa, was known as "stadion amphitheatron". STRABON 14. 1, 43; YILDIRIM 2009, 44; The epitaph of Laodikeia Stadion confirms this statement. ŞİMŞEK 2007, 200-204.

<sup>55</sup> YALMAN 1986, 435-450.

<sup>56</sup> FIRATLI 1979, 114.

<sup>57</sup> BECKER-BERTAU 1986, 23.

the middle of the building, thus emphasizing it visually. The inscription was engraved on thin marble slabs with very regular letters in two lines. Seven inscriptions were revealed, while four plates could not be found (Fig. 21-24).

The fact that these four panels with the inscription were visually brought to the fore gives the impression that this part is the very center of the stadion. The inscription plates were attached to the stadion wall with iron clamps. Only a small part of the lower edge of plate no. 1, which must have been located at the inscription's beginning, remains to this day. The plates are fractured and have deep cracks. The height of the letters in the two-line inscription is 11.5 cm. The writing part of plate no. 1 and the plates that should be in 3 separate pieces after plate no. 6 are missing. The plates were transferred to the museum garden with a report to prevent them from being stolen and destroyed and ensure restoration (Fig. 25-26)<sup>58</sup>.

### Text of the Epitaph

{ΑΥΤΟΚΡΑΤΟΡΙΚΑΙΣΑΡΙ}

ΘΕΟΥΝΕΡΟΥΑΙΩΝΩΘΕΟΥΤΡΑΙΑΝΟ{Υ}ΠΑΡΘΙΚΟΥΥΙΩ  
ΤΡΑΙΑΝΩΔΑΡΙΑΝΩΣΕΒΑΣΤΩΑΡΧΙΕΡΕΙΜΕΓΙΣΤΩΔΗΜ  
ΑΡΧΙΚΗΣ{ΕΞΟΥΣΙΑΣΤΟ. ΥΠΑΤΩΤΟ. ΠΑΤΡΙΠΑΤΡΙΔΟΣ}  
ΑΥΤΟΥΟΙΚΩΚΑΙΠΕΡΑΣΥ{ΝΚΛΗΤΩΚΑΙΤΩΔΗΜΩΡ  
ΩΜΑ Ι}ΩΝΚΑΙΒΟΥΛΗ{ΤΕΚΑΙΔΗΜΩΚΛΑΥΔΙΟΥΠΙΟ}  
ΛΕΙΤΩΝΚΛΑΥΔΙΑΠΡΟΚΛΑΚΑΙΑΠΛΩ{ΤΙΟΣ}ΙΟΥΑΙΑΝΟΣΕΞΥ  
ΠΟΣΧΕΣΕΩΣΓΝΔΟΜΙΤΙΟΥΠΟΝΤΙΚΟΥΙΟΥΑΙΑΝΟ{Υ}ΚΑΙΤΩΝ  
ΘΥΓΑΤΕ{ΡΩΝΑΥΤΟΥΤΗΣΔΕΙΝΟΣΚΑΙΤΗΣΔΕΙΝΟΣ}ΤΟΣΤΑΔΙ  
ΟΝΚΑΤΕΣΚΕ{ΥΑΣΑΝΕΚΤΩΝΔΙΩΝΚΑΙ}ΚΑΘΙΕΡΩΣΑΝ<sup>59</sup>.

### WALL REMNANT

The wall remains are located in the northern part of plot no. 17, on the edge of the plot within the 3rd-degree Archaeological Site. The wall extending in the east-west direction continues into the 2nd-degree Archaeological Site in the east direction. Since it is within the 2nd-degree Archaeological Site, no excavation was carried out in the continuation of the wall. The 1.10 m high, 70 cm thick, and 12.50 m long wall was built of rubble stone, without mortar. It is considered that the wall may have been built during the Ottoman Period as a retaining wall to prevent landslides (Fig. 27-29).

### BUILDING REMAINS

It covers an area measuring 4.00 m x 4.30 m in the middle of plot 15 (Fig. 30). The remains of the foundation, not providing a plan, contain different wall materials and are

<sup>58</sup> GÜNEŞ 2010, 161. After restoring the epitaph, it is planned to be exhibited in its place within the stadion in accordance with the Ankara Cultural and Natural Heritage Preservation Regional Board's decision dated 09.09.2008 and numbered 3507.

<sup>59</sup> ADAK ET AL 2008, 117. Translation of the epitaph: "Upon the words of Domitius Pontikus Iulianus and ... and ..., his daughters Klaudia Prokla and Ailius Plotius Iulianus had this stadium built with their own money and dedicated it to; Grandson of the god Nerva, son of the god Trajanus Parthicus, supreme priest, ruler for ... years, consul for ... times and father of the fatherland, Emperor Kaisar Trajanus Hadrianus, and his household, and the holy senate and the people of Rome and the advisory council of the Claudiopolises the council and its people." GÜNEŞ 2010, 162.

partially covered with brick blocks. Part of it is also paved with stones. A wastewater channel coming together from two directions was detected under the brick Flat blockage. Terracotta shisha bowls from the Ottoman Period and many broken ceramic fragments were found inside the building and in the filling soil above it. Due to the finds above, it was concluded that the foundations belonged to the remains of a building from the Ottoman Period; however, early studies reached no conclusion as to the function of the building. During the 2nd Period excavation in 2022, we determined that this structure was an unpretentious, small-sized Ottoman period bachelor's (Gırçık, Çıkçık) bath fit for one person (Fig. 31-32).

### ARTIFACTS UNEARTHED IN THE EXCAVATION

The following were unearthed during the salvage excavation: 1 terracotta bowl (Excavation artifact no: 1), 8 bronze coins (Excavation artifact no: 2,3,9,10,11,12,13,14), 1 terracotta single handle jug (Excavation artifact no: 8), 1 terracotta lamp (Excavation artifact no: 6), 1 bronze object (Excavation artifact no: 15), 1 bead (Excavation artifact no: 16); 1 terracotta pipe in front of the retaining wall (Excavation artifact no: 7) and 2 terracotta pipe in the fill soil in the foundation remains on plot 15 (Excavation artifact no: 4-5). Five of these are inventory, and 11 are study items. Architectural elements rolling down from the acropolis on the stadion were also recovered (Fig. 33-36).

Apart from the artifacts above, many ceramic sherds from the Roman, Byzantine, and Ottoman Periods were also unearthed (Fig. 37-45).

### DISCUSSION

Lactantius stated that the ancient city of Nicomedia, located in the Bithynia Region, has a circus dating to the Roman Period<sup>60</sup>. Claudiopolis is the only city in the region with a stadion according to current data. A wall considered to be a retaining wall belonging to the Ottoman Period was unearthed during the 2008 rescue excavation within the Bolu Province, Merkez County, Akpınar District, 3rd Degree Archaeological Site, layout 9, block 248, plots 42, 43, 61, and 64 besides the remains of a structure dating to the Ottoman Period and the stadion structure belonging to the Roman Emperor Hadrianus (AD 117-138) Period. During the 2nd Period excavation in 2022, it was determined that the Ottoman Period building remains belonged to a bachelor's (Gırçık, Çıkçık) bath.

It is considered that the seating rows of the stadion were made of limestones peculiar to the region and obtained from stone quarries close to the city. The 2022 studies revealed that they continue toward block 248, plots 42 and 43 in the east of the plots, block 248 in the southwest, and plots 64 and 61 in the west.

Registered as a 1st-degree archaeological site, the stadion is the largest monumental structure that has survived from the ancient city of Claudiopolis. Since stadions are large-sized structures, they were built within or outside

<sup>60</sup> LACTANTIUS 1984, 13.

the city. Considering the topography, the Claudiopolis Stadion was built in the city center. Since the main tunnel entrance, starting thresholds, turning signs, and a significant part of the structure have been destroyed by road works and constructions, the data is insufficient. Our knowledge of technical components does not go beyond estimation.

Although the building was considered to have a one-sided seating arrangement as far as it is observed on the soil surface today, the studies of 2022 suggested it had sphendones. The partial size of the building is 94.50 m. It can be suggested that the building must have been larger for the agons organized in the city in the Emperor's name. Constructing stadions on the hillside slope is a widely used technique in Anatolia, with many examples such as Tlos and Arykanda. The one-sided appearance of the Claudiopolis Stadion today is similar to these stadions. However, there is a possibility that the opposite tribune was on a vault while one side was on a slope. Our recent studies suggest that the stadium had a sphendone. Thus, it may have been similar to the stadions of Kibyra and Silyon.

Although there are hundreds of construction inscriptions belonging to the Roman Period in Anatolia, the stadion inscription in Bolu is known to be unique in terms of architecture. The Domitius family mentioned in the inscription is a group of senators in the Bitynia Region. This family's Roman citizenship and acquisition of their family name go back to the Roman Late Republic Period. During the Imperial Period, they became a prominent family<sup>61</sup>. Another inscription found in the city is about the posthumous honor of Domitius Pontikus Julianus, a young person mentioned in the stadion inscription, by the city's *bule* and *demo*<sup>62</sup>. The dedication of the stadion primarily to Emperor Hadrian, according to this inscription, is likely indicating a relationship beyond loyalty. This city was much more privileged than the others, as the young boy Antinoos, the Emperor's favorite, was from Claudiopolis. When Hadrianus Antinoos drowned in the Nile River in 130 AD when he was only 20 years old, the Emperor declared this young man from Claudiopolis as a god, displaying unusual behavior, and arranged agons in his name.

Most of the Agons were events within the folk festivals held under the patronage of a god, goddess, or hero of the city<sup>63</sup>. We learn from the inscription on a statue pedestal in the agons held in the city that Marcus Aurelius of Aphrodisias won the long-distance running competition<sup>64</sup>. We also learn from the honoring inscription of the athlete T. Aelius Aurelius Menandro found in Aphrodisias that the pankration competition was held in the adult class<sup>65</sup>. Although the name of the agon could not be determined, researchers suggested it could be the Hadrianeia Antinoeia Agon<sup>66</sup>. This agon was arranged in the city during the Hadrian Period to honor Emperor Hadrian and his associate Antinoos (Erol Özdizbay, 2011, p. 230). The honorary inscriptions of Marcus Aurelius,

T. Aelius Aurelius Menandros, and Aphrodisias Athletes' Association revealed that the events held in the stadium of Claudiopolis were agons of physical struggle.

As mentioned above, musical and athletic competitions were held in the agons celebrated for Antinoos and Hadrian, which made the city of Claudiopolis famous throughout the empire. These festivals, held in the stadiums, did not only include competitions but were also organizations of propaganda, which brought prestige to the city. The city also benefitted economically thanks to the spectators and athletes coming from all over the ancient geography for these organizations. The agons were held in the city's stadium or theater, where athletic competitions were organized in categories such as horse races, music competitions, running, long jump, javelin and discus throwing, wrestling, boxing, pentathlon, and pancreas wrestling<sup>67</sup>. The term pankration derives from the word pancreas and defines a heavy competition composed of a mixture of wrestling and boxing<sup>68</sup>. Uzunaslan stated that this competition, which is similar to wrestling, was practiced in the *skamma*<sup>69</sup> located in the middle part of the stadium<sup>70</sup>. Claudiopolis Stadion must have housed this competition category. It is suggested that another agon, Claudianeaia, of Isolympios quality, may belong to the 3rd century AD<sup>71</sup>. The sportive and musical competitions that began to be organized in the city in the 1st century AD continued uninterrupted until the first quarter of the 4th century AD. Following the prohibition of sportive and musical competitions with pagan characteristics by the Edict of Theodosius, the content and purpose of the games organized in the stadium underwent serious changes. Gladiatorial and wild animal fights of Roman origin replaced the competitions associated with ancient Greek gods<sup>72</sup>.

It can be argued that the competitions held at the Stadion of Claudiopolis are similar to the findings of O. Bingöl at the Stadion of Magnesia. Bingöl stated that the lack of details or evidence in recent research on the prevention of climbing or escaping from the arena to the stands rules out the assumption that gladiators fought to the death in the arena among themselves or with wild animals. It has also been revealed that the Stadion of Magnesia held equestrian competitions<sup>73</sup>. Similarly, no application preventing escape from the arena to the spectator area was detected in the tribune of the Claudiopolis Stadion. In line with Bingöl's suggestion, it is impossible to argue that wild activities were fully realized in the Claudiopolis Stadion. However, it should be remembered that the balustrade wall may have been destroyed during the construction of municipal shops right in front of it. It is also possible that the upper parts of the wall were built with pointed iron bars to prevent wild animals from harming the spectators and a portable barrier with knitted nets. While gladiators depicted on *bomos* and

<sup>61</sup> ADAK 2007, 162-163.

<sup>62</sup> ADAK ET AL 2008, 117.

<sup>63</sup> EROL ÖZDIZBAY 2011, 14.

<sup>64</sup> EROL ÖZDIZBAY 2011, 108-110.

<sup>65</sup> EROL ÖZDIZBAY 2011, 146.

<sup>66</sup> BOATWRIGHT 2000, 99, d.n. 75; EROL ÖZDIZBAY 2011, 235.

<sup>67</sup> EROL ÖZDIZBAY 2011, 24

<sup>68</sup> UZUNASLAN 1998, 89.

<sup>69</sup> Skamma: Sand filled area dug in the ground for wrestling competitions (MILLER 2004, 46).

<sup>70</sup> UZUNASLAN 1998, 91.

<sup>71</sup> EROL ÖZDIZBAY 2011, 232.

<sup>72</sup> UZUNASLAN 1998, 28.

<sup>73</sup> BİNGÖL 2020, 602.

oil lamps appear in many ancient cities<sup>74</sup>, no such finds have been found in Claudiopolis. This is in parallel with the findings; however, the gladiator monument in the Bolu Museum provides information about the types of games played in the city (Fig. 46). The eye section of the upper part of the limestone, shield-shaped grave monument is shaped like a perforated gladiator's helmet. Next to the helmet is a scraped dolphin fish. The lower part of the monument continues as a gladiator shield. The inscription is located here with another dolphin fish figure. There are hermes on both sides of the monument. The 2nd-century inscription on the monument reads, "Priest Secundus erected this for gladiators who fought one on one" (2nd-3rd century AD)<sup>75</sup>. Secundus was likely the financier of the gladiatorial games and erected such a monument to the dead gladiators<sup>76</sup>. The second gladiator inscription on display in the museum is the one Anatole commissioned for her husband Philokynegos, which reads, "...Invincible Gladiator, with bronze wreath..."<sup>77</sup>. Gladiatorial games were organized in the stadion of Claudiopolis, as evidenced by the inscriptions commissioned by the priest Secundus and Anatole<sup>78</sup>. The fact that the monuments were found in Tepecik District indicates the presence of a possible gladiator cemetery here. Furthermore, athletic competitions were replaced by the more popular gladiatorial games and wild animal shows since the 4th century AD<sup>79</sup>, indicating that the Claudiopolis stadion must have lasted until these dates.

The ones organizing and paying for these competitions received the title of agonothetes and held this honorary and prestigious title for the rest of their life<sup>80</sup>. We learn from the funerary inscription of Iulianus and his wife Alexandra, dated to the 3rd century AD, that Iulianus was the agonothet of the Claudianeia Agon in Claudiopolis<sup>81</sup>. We also learn from the honoring inscription on a statue pedestal by Gnaeus Domitius Panticus Iulianus, the city boule, and demos, that Titus Domitius Pius was gymnasiarch and agonothetes on his own account<sup>82</sup>. According to the inscription on the structure, the construction was financed by Domitius Ponticus Iulianus and his family and dedicated to Emperor Hadrian, the ruler of the period. The fragment bearing the inscription of the year of the Emperor's reign was not found during the excavation among the plates bearing the building inscription. It is also known that the Domitius family had been present in the region since the Late Republic. Roman public works must have expanded in the city, which gained importance during the Imperial Period. The stadion was used in the agons mentioned above. Although there is no precise information on whether the building was built before Hadrian, the data present indicated that the Domitius family carried out important public works for the city before

<sup>74</sup> ÖZCAN 2022, 105.

<sup>75</sup> FRENCH/ÜDEMIŞ 1989, 91, 92, 98.

<sup>76</sup> BİLİR/TUNA 2022, 1232.

<sup>77</sup> FRENCH/ÜDEMIŞ 1989, 92-93.

<sup>78</sup> BİLİR/TUNA 2022, 1232.

<sup>79</sup> UZUNASLAN 1998, 28.

<sup>80</sup> GOLDEN 2004, 5.

<sup>81</sup> DÖRNER 1952, 53, nr. 134.

<sup>82</sup> ADAK ET AL 2008, 77-78.

Emperor Hadrian. Accordingly, it is difficult to say exactly in which year the stadion was built.

The 2022 excavations yielded important data on the construction date and typology of the structure. The recovered ceramic sherds and coins show that the stadion was used in the 2nd and 3rd centuries. The latest of the eight bronze coins discovered behind the inscription is dated to the reign of Emperor Septimius Severus (193-217 AD), which gives a precise date for the late use of the stadion.

The stadion excavation finds group is diverse. The reports of other stadion excavations in Anatolia do not include detailed analyses, so it isn't easy to make comparisons. The stadion site was actively used in the late periods, as evidenced by the Ottoman-era baths and recovered ceramics and shishah bowls. The number of coins recovered in the find group is lower than the ones retrieved from the Ephesos Stadion excavations<sup>83</sup>. The site was damaged due to the reuse of the area, which must be the reason for the low number of artifacts recovered, according to the current data.

As mentioned above, the remains of the stadion continue towards Plots 42 and 43 to the east and towards Plots 61 and 64 to the west and southwest of Plots 15-16-17-18. In order to reveal the extensions of the stadion in other plots, it is necessary to continue rescue excavations in layout 9, block 248, plots 42, 43, 61, and 64. Essential works to reveal the stadion in its entirety, which has been partly uncovered, are being carried out today. Therefore, excavation and earthworks started here in 2022. The four plates of the inscription, which could not be found in 2008, and the continuation of the seating rows may be recovered with new excavations. If the top seating row is identified, the audience capacity can also be estimated. Obviously, the relationship of Claudiopolis with other cities and its hidden values should be uncovered through scientific excavations and introduced to the archaeology and regional tourism of Turkey. Since the present settlement was built on top of the ancient city, no structure has survived standing to this day.

In terms of planning, changes were made in Anatolian stadions' sphendone section in the Late Roman Period. A set was drawn in the middle of the race track in the sphendone sections of the Aphrodisias and Perge stadions. Studies reported that this was carried out for gladiator games<sup>84</sup>. This may have been done due to the city's decreasing population and welfare level. It is possible to say that these large stadions lost their primary construction function in the late periods<sup>85</sup>. However, we can state that these applications were not performed in the Claudiopolis stadion.

<sup>83</sup> KARWIESE 1997, 23.

<sup>84</sup> UZUNASLAN 2010, 20.

<sup>85</sup> ÇOKSOLMAZ 2022a, 24.

## REFERENCES

- ADAK 2007  
Adak, M., Zwei Senatorische Familien aus Klaudiupolis, *GEPHYRA* 4, 162-163.
- ADAK/AKYÜREK ŞAHİN/GÜNEŞ 2008  
Adak, M./Akyürek Şahin, N. E./Güneş, M. Y., Neue Inschriften im Museum von Bolu (Bithynion/Klaudiupolis), *GEPHYRA* 5, 73-120.
- BAYBURTLUOĞLU 2003  
Bayburtluoğlu, C., *Yüksek Kayalığın Yanındaki Yer Arykanda* (İstanbul: Homer Kitapevi).
- BECKER BERTAU 1986  
Becker Bertau, F., *Die Inschriften von Klaudiupolis / Herausgegeben von Mit Einem Anhang von Wolfram Weiser: Zur Münzprägung von Bithynion* (Bonn: Rudolf Habelt).
- BİLİR/TUNA 2022  
Bilir, G./Tuna, D., Klaudiupolis Antik Kenti Stadyumu, *Abant Sosyal Bilimler Dergisi* 22.3, 1226-1236.
- BINGHAM 1834  
Bingham, J., *Origines Ecclesiasticae: or, The Antiquities of the Christian Church, and Other Works* (London: William Straker).
- BİNGÖL 2020  
Bingöl, O., Magnesia Kazıları 2011-2018, 41. *Kazı Sonuçları Toplantısı* 3, 591-613.
- BİNGÖL/KÖKDEMİR/ORAL 2008  
Bingöl, O./Kökdemir, G./Oral, M., Menderes Magnesiası Stadion Kazıları (2004, 2007, 2008), *Anadolu/Anatolia* 34, 119-144.
- BOATWRIGHT 2000  
Boatwright, M. T., *Hadrian and The Cities of The Roman Empire* (Princeton-New Jersey: Princeton University Press).
- ÇOKSOLMAZ 2022a  
Çoksolmaz, E., *Anadolu'da Roma Döneminde Tiyatro ve Stadion İlişkisi* (Eskişehir: Anadolu Üniversitesi Sosyal Bilimler Enstitüsü Yayınlanmamış Doktora Tezi).
- ÇOKSOLMAZ 2022B  
Çoksolmaz, E., Anadolu Antik Stadionlarında Yönlendirme, *Amisos* 7.13, 368-377.
- DEMİRCİOĞLU 1967  
Demircioğlu, H., Roma Devletinin Eyalet (Provincia) Sistemi Hakkında, *Tarih Araştırmaları Dergisi* 5.8, 443-459.
- DİMİCİOĞLU 2012  
Dimicioğlu, S., Sebilci, *Bolu Kültür Dergisi* 2, 1-20.
- DIO CASS. CASSIUS DIO 1954  
Dio Cass. Cassius Dio, *Historia Romana*. In: E. Carry, E. (ed.), Loeb Classical Library (London).
- DÖKÜ/KAYA 2013  
Dökü, E./Kaya, M. C., The Architecture and Function of The Stadium of Kibyra, *Adalya XVI*, 177-203.
- DORNER 1941  
Dörner, F. K., *Inschriften und Denkmäler aus Bithynien*, Berlin.
- DORNER 1952  
Dörner, F. K. *Bericht Über Eine Reise in Bithynien* (Wien: R. M. Rohrer. Verlag der Österreichischen Akademie der Wissenschaften).
- EROL ÖZDİZBAY 2011  
Erol Özdzibay, A., Roma İmparatorluk Dönemi'nde Pontus-Bithynia Eyaleti'nde Agon'lar ve Agonistik Sikkeler (İstanbul: İstanbul Üniversitesi Sosyal Bilimler Enstitüsü Yayınlanmamış Doktora Tezi).
- FIRATLI 1979  
Fıratlı, N., Impressions Sur le Temple et le Théâtre de Bolu (Bithynion – Claudiopolis) en Bithynie. *Florilegium Anatolicum (mélanges offerts à Emmanuel Laroche)*, Paris: E. de Boccard, 111-120.
- FRENCH/ÜDEMİŞ 1989  
French, D./Üdemiş, M., Two Gladiatorial Texts from Claudiopolis in Bithynia, *Epigraphica Anatolica* 13, 92-93.
- GOLDEN 2004  
Golden, M., *Sport in The Ancient World From A to Z* (London-New York: Routledge).
- GOUGH 1952  
Gough, M., Anazarbus, *Anatolian Studies* 2, 85-150.
- GÜNEŞ 2010  
Güneş, M. Y., Bolu İli, Merkez İlçe, Stadion Kurtarma Kazısı, 2008, 18. *Müze Çalışmaları Ve Kurtarma Kazıları Sempozyumu*, 159-173.
- GÜNEŞ 2011  
Güneş, M. Y., Bolu İli, Merkez İlçe, Stadion Kurtarma Kazısı, 2008, *Uluslararası Köroğlu, Bolu Tarihi ve Kültürü Sempozyumu Bildirileri*, 17-18 Ekim 2009, 294-308.
- HARRIS-RYDE 1980  
Harris-Ryde B. F., Bithynia: Roman Sovereignty and Survival of Hellenism. ANRW, Hildegard Temporini (ed.) Berlin-New York, 857-901.
- HOCKER 2001  
Höcker, C., Stadion. *Der Neue Pauly*, Bd, 888-890.
- JONES 1971  
Jones, A.H.M. *The Cities of Eastern Roman Provinces* (Oxford: Clarendon Press).
- KAN ŞAHİN 2019  
Kan Şahin, G., Bir Anadolu Eyaleti Olarak Honorias, *Karadeniz İncelemeleri Dergisi* 27, 11-42.
- KARAGÜLLE 2015  
Karagülle, C., Bolu'da Antik Dönem ve Mimari İzleri, *Abant İzzet Baysal Üniversitesi, Mühendislik Ve Mimarlık Fakültesi*, 1-15.
- KARWIESE 1997  
Karwiese, S., Türkiye/Ephesos, Grabungen 1996, *ÖJh* 66, 4-48.
- KIURI 2015  
Kiuri, M., The Stadium of Olympia, Olympic Values: Respect For Diversity, International Olympic Academy, *54th International Session For Young Participants, Ancient Olympia*, Olympic Values: Respect For Diversity, 1-9.
- LACTANTIUS 1984  
Lactantius, *De Mortibus persecutorum VII. 9.* (Çev: J.L. Creed), Oxford University Press.
- LANCKORONSKI 2005  
Lanckoronski, K. G. V., *Pamphylyia ve Pisidia kentleri. Pamphylyia I. Cilt*, (Çev: S. Bulgurlu Gün), İstanbul: AKMED Yayınları.

## MACRO 1980

Macro, A.D., *The Cities of Asia Minor Under the Roman Imperium*. ANRW, Hildegard Temporini (ed.), Walter de Gruyter, Berlin-New York, 659-695.

## MAGIE 1950

Magie, D., *Roman Rule in Asia Minor* (Princeton: Princeton University Press).

## MAREK 2003

Marek, C., *Bithynia et Pontus* (Berlin: Philipp Von Zabern).

## MILLER 2004

Miller, S. G., *Ancient Greek Athletics* (New Haven and London: Yale University Press).

## ÖZCAN 2022

Özcan, S., Aizanoi Antik Kenti'ndeki Gladyatör Betimleri, *Amisos* 7.12, 99- 120.

## ÖZGAN 1997

Özgan R., Alkamenes'in Hermes Propylaios Üzerine Düşünceler, *TAD* 31, 155-181.

## PAUSANIAS 1918-1935

Pausanias, *Perihegesis tes Hellados / Pausanian description of Greece. I-IV*. (Çev: W. H. S. Jones). The Loeb Classical Library, London: Heinemann - Cambridge, Mass.: Harvard University Press.

## PLINIUS 1947

Plin. nat. Plinius d. J., *Historia naturalis*, H. R. Racham (ed.), London: Loeb Classical Library.

## PERROT 1862

Perrot, G. *Exploration archéologique de la Galatie et de la Bithynie, d'une partie de la Mysie, de la Phrygie, de la Cappadoce et du Pont*, exécutée en, Paris: Firmin Didot, et publiée sous les auspices du Ministère d'État.

## SALTUK 1997

Saltuk, S., *Arkeoloji Sözlüğü* (İstanbul: İnkılap Kitabevi).

## SEVİN 2001

Sevin, V., *Anadolu'nun Tarihi Coğrafyası* (Ankara: Türk Tarih Kurumu Basımevi).

## STRABON 1991

Strab. Strabon, *Geographika*, (çev. Adnan Pekman), *Antik Anadolu Coğrafyası* (12-13-14), İstanbul: Arkeoloji Sanat Yayınları.

## ŞAHİN 2013

Şahin, S., Antik Kaynaklar Işığında Tarihte Bithynia Depremleri, E. Akyürek Şahin/B. Takmer/F. Onur (eds.), *Eskiçağ Yazıları*, 5, Akron 7, İstanbul: Akdeniz Dillerini ve Kültürlerini Araştırma Merkezi Yayını, 1-16.

## ŞİMŞEK 2005

Şimşek, C., Laodikeia Stadionu, *Kent ve Sanat Dergisi* 6, 30-34.

## ŞİMŞEK 2007

Şimşek, C., *Laodikeia (Laodikeia ad Lycum)* (İstanbul: Ege Yayınları).

## TEXIER 1997

Texier, C., *Küçük Asya: Bithynia* (Çev: R. Kaplanoğlu), İstanbul: Avrasya Etnografya Vakfı.

## UMAR 1986

Umar B., *Bithynia* İstanbul: Akbank Yayınları.

## UZUNASLAN 1998

Uzunaslan, A., *Antik Helenlerde Bedensel Agonlar* (İstanbul: Marmara Üniversitesi Sosyal Bilimler Enstitüsü Yayınlanmamış Yüksek Lisans Tezi).

## UZUNASLAN 2010

Uzunaslan, A. Mimari Tipoloji ve Fonksiyon Açısından Aphrodisias Stadyumu, *SDÜ Fen Edebiyat Fakültesi Sosyal Bilimler Dergisi* 21, 11- 42.

## VALAVANIS 1999

Valavanis, P., *Hysplex, The Starting Mechanism in Ancient Stadia, A Contribution to Ancient Greek Technology* (The University of California Press).

## VITRUVIUS 2005

Vitruvius, *Mimarlık Üzerine On Kitap*, (Trans: Morris Hicky Morgan), Şevki Vanlı Mimarlık Vakfı IV. Baskı, Ankara.

## WILCKEN 1897

Wilcken, U., Bithys. *Paulys Realencyclopädie der Classischen Altertumswissenschaft (RE)*, III/1, 542-543.

## WORT 1889

Wort, W., *Pontus, Paphlagonia, Bithynia and Kingdom of Bosphorus Catalogue of Greek Coins*, Brit. Mus. 13, (London: The Trustees).

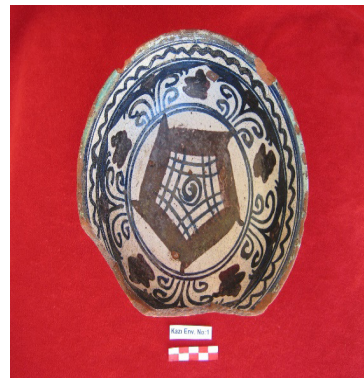
## YALMAN 1986

Yalman, B., Bolu Hisar-tepe Kazısında Bulunan Tapınak Kalıntısı, *TTK* 9, 435-450.

## YILDIRIM 2009

Yıldırım, B., *Aphrodisias: Şehir ve Kamu Yapıları, Aphrodisias: City and Public Buildings* Smith-Lenaghan (ed.), 35-53.

## CATALOGUE

**Cat. No. 1****Excavation Inv. No:** 1**Name of Artifact:** Bowl**Material of Artifact:** Terracotta**Period of Artifact:** Ottoman Period**Arrival Date:** 11.07.2008**Excavation Location:** Bolu Province, Merkez County, Akpınar District, layout 9, block 248, plots 15, 16, 17, 18, Stadion Remains**Status:** Fractures and abrasions on the edges and surface.**Dimensions:** Thickness.: 6 cm. Height.: 10.3 cm.**Base Diameter:** 7.8 cm. **Rim Diameter:** 18.7 cm.

**Description:** The rim of the hemispherical bowl widens outwards. It has a short ring-shaped base. The exterior surface of the bowl is glazed with green glaze over white slip. The bottom and the base of the bowl are left unglazed and unprimed. The inner surface of the bowl is white slipped and transparent glazed. The inner surface is divided into three sections with three borders in double lines. The bowl belly is decorated with geometric motifs in cobalt blue within a thick-sided pentagon painted in manganese purple within a circle. The second border is decorated with abstract floral motifs in manganese purple and cobalt blue, while the outermost border is decorated with a zigzag motif.

**Cat. No. 2****Excavation Inv. No:** 2**Name of Artifact:** Coin**Material of Artifact:** Bronze**Period of Artifact:** Rome (AD 193-217)**Arrival Date:** 11.07.2008**Excavation Location:** Bolu Province, Merkez County, Akpınar District, layout 9, block 248, plots 15, 16, 17, 18, Stadion Remains (Rear of Inscription)**Status:** Abrasion and oxidation in places**Dimensions:** Diameter: 3 cm. Weight: 13.55 gr.

**Description:** Roman Province of Bithynia. Bithynium-Claudiopolis Obverse: Bust of emperor Septimius Severus facing right. One row of dot border. [A.....]T[ ]COVH[.]OC ΠΙΕΠΤ·ΑΥΤΟV

**Reverse:** Depiction of standing god facing right. IOVNICΩN ΔΔΡΙΑΝΩΛΙ

**Cat. No. 3****Excavation Inv. No:** 3**Name of Artifact:** Coin**Material of Artifact:** Bronze**Period of Artifact:** Rome (AD 161-180)**Arrival Date:** 11.07.2008**Excavation Location:** Bolu Province, Merkez County, Akpınar District, layout 9, block 248, plots 15, 16, 17, 18, Stadion Remains (Rear of Inscription)**Status:** Abrasions and oxidation on both sides.**Dimensions:** Diameter: 2.7 cm. Weight: 14.76 gr

**Description:** AE30. Pautalia, Thrace. Obverse: Bust of bare-headed Emperor Pautalia Marcus Aurelius wearing armor facing right. One row of dot border. AV K MAP [ΑΥΡΗΑΙΟC ΑΝΤΩΝΙΝΟC],

*Reverse:* Priest facing left ΟΥΛΙΠΙΑC ΠΑΥΤΑΛΙΑC, River god (Strymon, bearded) reclining, a vine branch, and a reed in right hand; resting on a water vessel. One row of dot border.

**Cat. No. 4**

**Excavation Inv. No:** 4

**Name of Artifact:** Shisha Bowl

**Material of Artifact:** Terracotta

**Period of Artifact:** Ottoman Period

**Arrival Date:** 11.07.2008

**Excavation Location:** Bolu Province, Merkez County, Akpınar District, layout 9, block 248, plot 15 Structure Remains

**Status:** The rim of the bowl is broken and missing.

*Dimensions:* Length: 5.8 cm. Bowl Diameter: 4 cm.



**Description:** Buff-colored paste and slip. It consists of a spherical chamber and a cylindrical horizontal rod socket. The rim of the rod socket, with a triangular curve under the bowl, has a rounded profile and protrudes outwards. The rim of the rod holder is carved in relief with lozenge motifs interbedded within a band bordered by small notches. The part where the chamber meets the rod slot is curved outward and decorated with concave and convex lines in circles, inverted to each other. There are rows of notches and geometrically decorated borders around it. The outward-widening rim is decorated with three-slice, circular-lined motifs in the scraping technique.

**Cat. No. 5**

**Excavation Inv. No:** 5

**Name of Artifact:** Shisha Bowl

**Material of Artifact:** Terracotta

**Period of Artifact:** Ottoman Period

**Arrival Date:** 11.07.2008

**Excavation Location:** Bolu Province, Merkez County, Akpınar District, layout 9, block 248, plot 15 Structure Remains

**Status:** It has cracks and abrasions and is darkened due to burning.

*Dimensions:* Length: 5 cm. Bowl Diameter: 2.2 cm.



**Description:** Light brown paste and slipped. It consists of a long cylindrical chamber and a short cylindrical horizontal rod socket. The rim of the rod socket, which has a narrow triangular bulge under the bowl, is protruding and has a rounded profile. The lower part of the bowl is decorated with vertically placed slices. The long cylindrical rim of the bowl is decorated with fish scale motifs in relief. The rod and bowl slots have cracks and abrasions. It is darkened due to burning.

**Cat. No. 6**

**Excavation Study No:** 1

**Name of Artifact:** Oil Lamp

**Material of Artifact:** Terracotta

**Period of Artifact:** Roma

**Arrival Date:** 11.07.2008

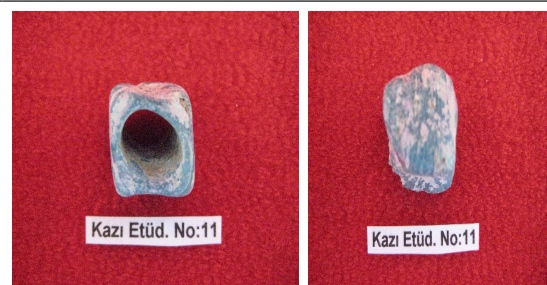
**Excavation Location:** Bolu Province, Merkez County, Akpınar District, layout 9, block 248, plots 15, 16, 17, 18, Stadion Remains

**Status:** It has abrasions on the surface and is broken and incomplete.

*Dimensions:* Height.: 2.9 cm. Width.: 6.3 cm.



**Description:** Brown paste and brick-red slip. It has a flattened body with an elliptical relief border around the disc. The wick hole and handle are broken.

**Cat. No. 7****Excavation Study No:** 2**Name of Artifact:** Shisha Bowl**Material of Artifact:** Terracotta**Period of Artifact:** Ottoman Period**Arrival Date:** 11.07.2008**Excavation Location:** Bolu Province, Merkez County, Akpınar District, layout 9, block 248, plot 15 Stadion Remains**Status:** The rim of the chamber is broken and missing. It has abrasions on the surface.*Dimensions:* Length.: 6.1 cm. Bowl Diameter: 2.8 cm.**Description:** Light brown paste and brick-colored slip. The rim consists of a spherical bowl expanding upwards and a cylindrical horizontal rod socket. The rod socket has a triangular bulge under the bowl, and the protruding rim is octagonal with concave curved edges.*Two parallel rings are engraved on the rod socket as lines. The lower part of the rings bears the seal of the master in a small cartouche. A floral motif is engraved on both sides of the chamber slot, and three leaf motifs are engraved on the upper edge of the triangular bulge. The rim of the bowl is broken and missing. There are abrasions on the surface.***Cat. No. 8****Excavation Study No:** 3**Name of Artifact:** Single Handle Jug**Material of Artifact:** Terracotta**Period of Artifact:** Ottoman Period (?)**Arrival Date:** 11.07.2008**Excavation Location:** Bolu Province, Merkez County, Akpınar District, layout 9, block 248, plots 15, 16, 17, 18, Stadion Remains**Status:** It has abrasions on the surface and is broken and incomplete.*Dimensions:* Base Diameter: 8.5 cm.**Description:** In buff paste color. It has a bulging body and ring base. The body is decorated with double vertical incised lines parallel to each other at intervals, and the neck with incised decoration in the form of veined leaves. The upper part of the neck and the handle are broken and incomplete. The base is broken in certain places.**Cat. No. 15****Excavation Study No:** 10**Name of Artifact:** Object**Material of Artifact:** Bronze**Period of Artifact:** ?**Arrival Date:** 11.07.2008**Excavation Location:** Bolu Province, Merkez County, Akpınar District, layout 9, block 248, plots 15, 16, 17, 18, Stadion Remains (Rear of Inscription)**Status:** Oxidized.*Dimensions:* Diameter: 2.3 cm.**Description:** It has a hole in the center and a circular line around the hole and on the edge.**Cat. No. 16****Excavation Study No:** 11**Name of Artifact:** Bead**Material of Artifact:** Glass (?)**Period of Artifact:** ?**Arrival Date:** 11.07.2008**Excavation Location:** Bolu Province, Merkez County, Akpınar District, layout 9, block 248, plots 15, 16, 17, 18, Stadion Remains**Status:** It has abrasions on the surface and fractures on the edges.*Dimensions:* Diameter: 2.3 cm.**Description:** It is blue, cubic, and has a round hole in the center.

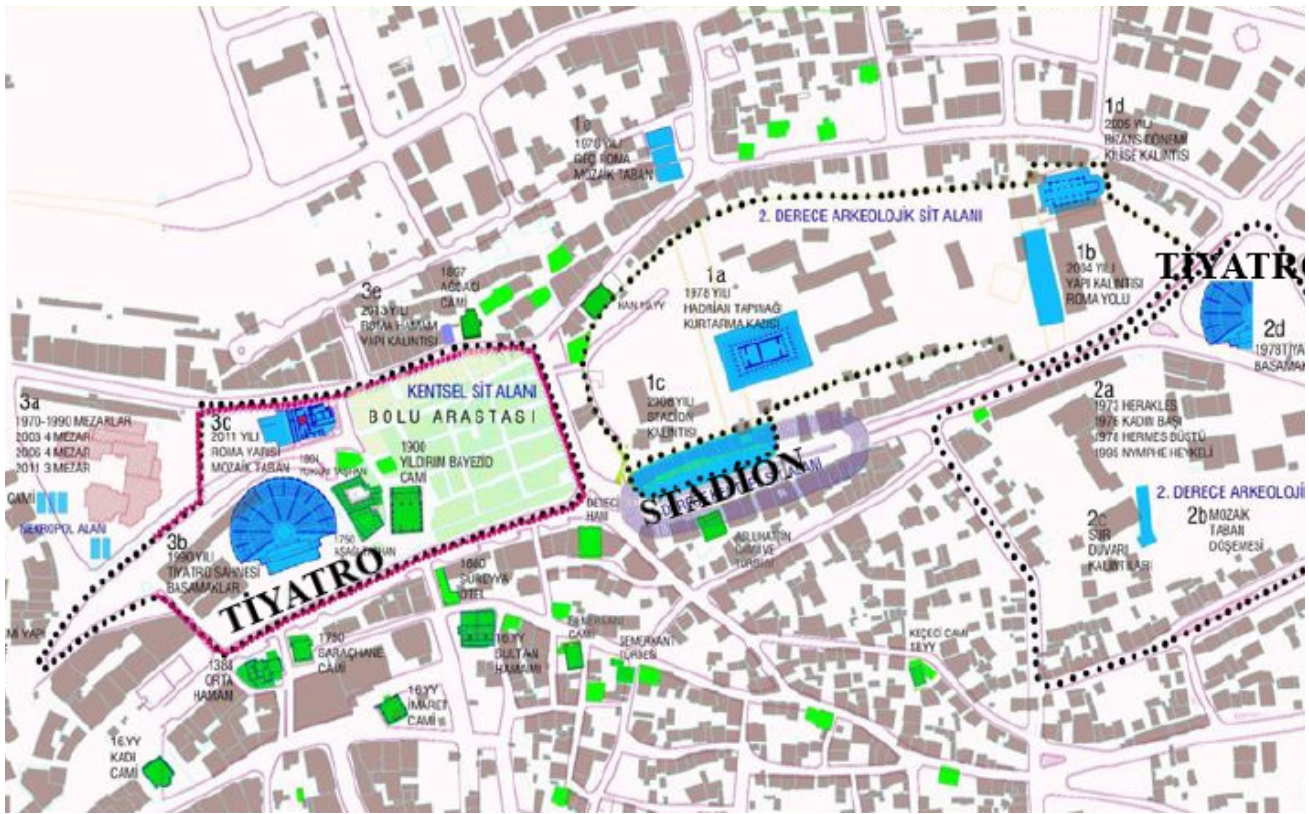
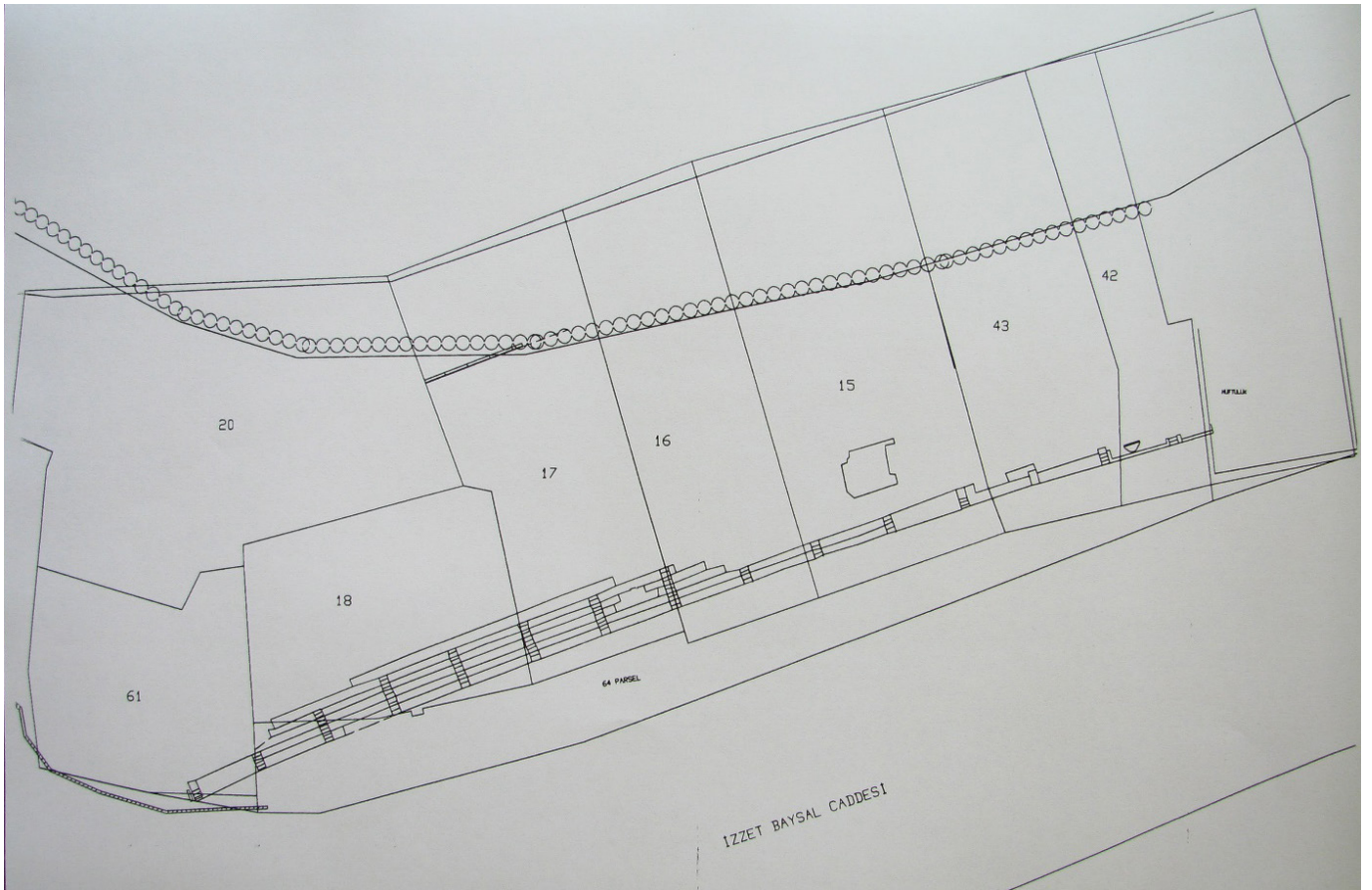


Fig. 1. Claudiopolis city plan (Karagülle, 2015, no. 401, Şek. 3).



Fig. 2. Claudiopolis Stadium (Güneş, 2010, Har. 1).



**Fig. 3.** Claudiapolis Stadium plan (Güneş, 2010, Plan 1).



**Fig. 4.** Claudiapolis Acropolis and Stadium.



**Fig. 5.** Akpınar Neighborhood and municipality shops.



**Fig. 6.** Demolition of houses and shops.



**Fig. 7.** Demolition of houses and shops.



**Fig. 8.** Drillings.



**Fig. 9.** Drillings.



**Fig. 10.** Drillings.



**Fig. 11.** The residue unearthed in sounding no. 28.



**Fig. 12.** Wall remains in sounding 21.



**Fig. 13.** The residue detected in sounding no. 24.



**Fig. 14.** The residue detected in sounding no. 25.



**Fig. 15-16.** General view from southeast of parcels 61, 64, 18, 17, 16, 15, 43 and 42 and the Stadium ruins exposed in these parcels.



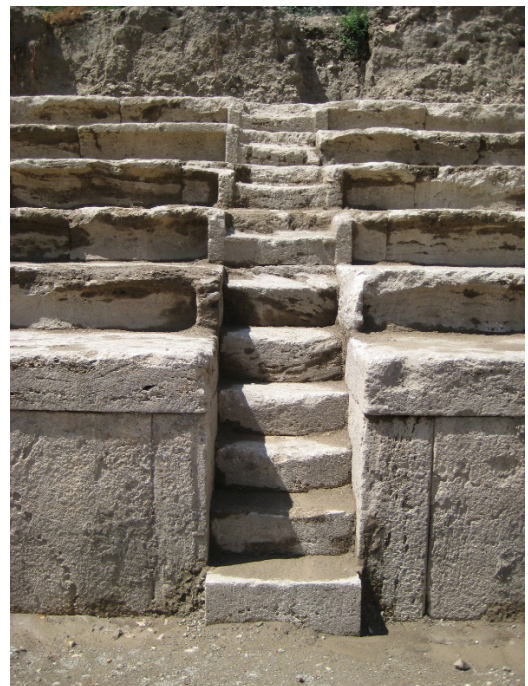
**Fig. 17.** Working in the stadium.



**Fig. 18.** Working in the stadium.



**Fig. 19.** Stadium ruins.



**Fig. 20.** Stadium stairs.



Fig. 21. Stadium epitaph.



Fig. 22. Stadium epitaph.



Fig. 23. Stadium epitaph.



Fig. 24. Stadium epitaph.



Fig. 25. Stadion epitaph in Bolu Museum.

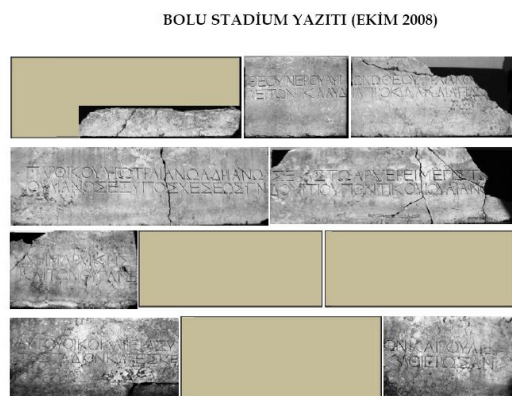


Fig. 26. Stadium epitaph.



**Fig. 27.** Ottoman retaining wall works.



**Fig. 28.** Ottoman retaining wall.



**Fig. 29.** Ottoman retaining wall.



**Fig. 30.** Get in and out bath works.



**Fig. 31.** Get in and out bath.



**Fig. 32.** Get in and out bath.



**Fig. 33.** Architectural element from the stadium.



**Fig. 34.** Architectural element from the stadium.



**Fig. 35.** Architectural element from the stadium.



**Fig. 36.** Architectural element from the stadium.



**Fig. 37.** Pottery pieces found.



**Fig. 38.** Pottery pieces found.



Fig. 39. Pottery pieces found.



Fig. 40. Pottery pieces found.

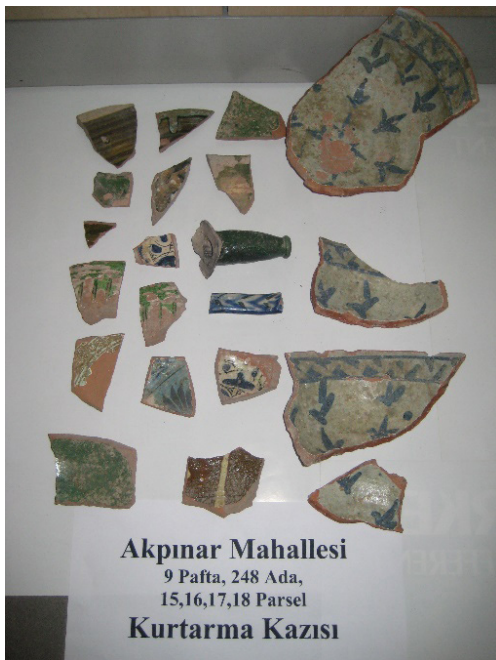


Fig. 41. Glazed pottery pieces.



Fig. 42. Pottery pieces found.



Fig. 43. Handles.



Fig. 44. Roman Period pottery sherds.



**Fig. 45.** Glazed and unglazed pottery pieces.



**Fig. 46.** Gladiator Monument.