



INSTITUTE OF ARCHEOLOGY  
AND ART HISTORY OF ROMANIAN  
ACADEMY CLUJ-NAPOCA



UNIVERSITATEA TEHNICĂ  
DIN CLUJ-NAPOCA

JAHA  
JOURNAL OF ANCIENT HISTORY  
AND ARCHAEOLOGY

editura  
MEGA

---

# Journal of Ancient History and Archaeology



Scopus®



Clarivate  
Analytics



Central and Eastern European Online Library

EBSCO

© creative commons

Google  
scholar

ERIH PLUS  
EUROPEAN REFERENCE INDEX FOR THE  
HUMANITIES AND SOCIAL SCIENCES

DOAJ DIRECTORY OF  
OPEN ACCESS  
JOURNALS

No. 11-4 / 2024

# CONTENTS

## STUDIES

### ANCIENT HISTORY

#### Arturo SANCHEZ SANZ

NOMADIC VS. SEDENTARY. GENDER, PRODUCTION AND SOCIAL EVOLUTION IN THE EASTERN EURASIAN STEPPE BETWEEN THE CHALCOLITHIC AND THE BRONZE AGE.....3

#### Antonio RUIZ SÁNCHEZ, Sebastián URIBE RODRÍGUEZ

THE GIANT'S TRAIL: MOBILITY AND EXCHANGE OF WHALES AND THEIR BY-PRODUCTS IN ANTIQUITY (1ST CENTURY BC-5TH CENTURY AD).....13

#### Roxana-Gabriela CURCĂ, Lucrețiu MIHAILESCU-BÎRLIBA

WOMEN IN MILITARY DIPLOMAS FROM MOESIA INFERIOR. A PRELIMINARY STUDY.....25

### ARCHAEOLOGY

#### Marius-Mihai CIUȚĂ, Anamaria TUDORIE

NEW DATA ON THE CULTURAL HORIZON OF EARLY NEOLITHIC POLYCHROME POTTERY IN TRANSYLVANIA. THE 432A COMPLEX FROM THE LIMBA-OARDA DE JOS-SITE (ALBA COUNTY).....30

#### Stanislav GRIGORIEV

THE RELATIONSHIP BETWEEN SOLAR AND VOLCANIC ACTIVITY AND THE CHRONOLOGY OF ARCHAEOLOGICAL CULTURES OF EURASIA IN THE 4TH-1ST MILLENNIA BC.....44

#### Davut YİĞİTPAŞA, Orhan Alper ŞİRİN

AMISOS ANCIENT CITY EXCAVATION AND POTTERIES.....57

#### Boaz ZISSU, Amir GANOR, Rina AVNER, Alon KLEIN

ARCHAEOLOGICAL EXPLORATIONS ABOVE AND BELOW GROUND AT HORVAT MIDRAS, JUDEAN FOOTHILLS, ISRAEL....86

#### Ovidiu ȚENȚEA, Vlad CĂLINA

ROMAN CAMPS IN ROMANIA. THE STATE OF RESEARCH.....127

#### Vitalie BÂRCĂ, Cristinel FÂNTÂNEANU, Anca MATIȘ, Cristian FLORESCU

ASPECTS OF THE FUNERARY RITE AND RITUAL IN THE SARMATAE CEMETERY OF TIMIȘOARA-HLADIK 1 (TIMIȘ COUNTY). PRELIMINARY OBSERVATIONS .....166

#### Albina YERZHANOVA, Gulzada SARGIZOVA, Yeraly AKYMBEK

THE SIGNIFICANCE AND USE OF ANIMAL SCAPULAS IN TALDYSAI SETTLEMENT.....199

## ARCHAEOLOGICAL MATERIAL

#### Bariş GÜR, Sinan MİMAROĞLU

MYCENAEAN FEMALE FIGURINE AND ZOOMORPHIC VESSEL IN THE AYASULUK HILL IN WESTERN ANATOLIA.....204

#### Yaşar ARLI

PORTRAIT TYPES OF THE EMPERORS OF THE FLAVIAN DYNASTY PRESERVED IN ANATOLIA.....214

#### Dávid PETRUȚ

CAMP DRESS OR PARADE ARMOUR? AN EQUESTRIAN OFFICER COMMEMORATED ON A FUNERARY RELIEF FROM BRÂNCOVENEȘTI.....224

#### MATYAS Jozsef

A ROMAN TILE WITH THE PRINT OF A PINCER.....234

## ARCHAEOLOGICAL MATERIAL AND REPORTS

#### Cristinel PLANTOS, Vitalie BÂRCĂ, Cristian Ioan POPA

AT THE BORDER. THE RESCUE ARCHAEOLOGICAL RESEARCH OF CĂMIN (SATU MARE COUNTY).....240

## ARCHAEOLOGICAL TOPOGRAPHY

#### Florin-Gheorghe FODOREAN

MAPS OF ROMAN DACIA. VI. PHILLIPUS CLUVERIUS' MAP 'DACIARUM MOESIARUM ET THRACIAE VETUS ET NOVA DESCRIPTIO' (1629).....337

## NUMISMATICS

#### Gabriel Mircea TALMAȚCHI

ARROWHEADS AND DOLPHINS: PRE-COINAGE MONETARY INSTRUMENTS FROM THE WESTERN BLACK SEA (5<sup>TH</sup> CENTURY BC).....341

## REVIEWS

#### Roxana-Gabriela CURCĂ

ANNAMÁRIA-IZABELLA PÁZSINT, *PROSOPOGRAPHIA PONTI EUXINI. CALLATIS ET ODESSUS*, CLUJ-NAPOCA, MEGA PUBLISHING HOUSE, 2024, 308 P. ISBN: 978-606-020-707-8. ...348

#### Csaba SZABÓ

FEDERICA GATTO, FRANÇOISE VAN HAEPEREN (EDS.), *CULTES ET DIVINITÉS DANS LES CARRIÈRES ET LES MINES DE L'EMPIRE ROMAIN*, COLLECTION FERVET OPUS 10, PRESSES UNIVERSITAIRES DE LOUVAIN: LOUVAIN, 2023, 240P. ISBN: 978-2-39061-415-9.....350

ISSN 2360 266x  
ISSN-L 2360 266x

Design & layout: Francisc Baja



EDITURA MEGA | www.edituramega.ro  
e-mail: mega@edituramega.ro

# AMISOS ANCIENT CITY EXCAVATION AND POTTERIES<sup>1</sup>

**Abstract:** Çakalca-Karadoğan Mound excavations revealed that the city of Amisos was first colonized by Miletos colonists in the mid-6th century BC. The second foundations of the city were laid here at the end of the 4th century BC, at the Toraman Hill and its surroundings, 16 km away. Based on the findings from the Archaic and Classical Period unearthed during the Çakalca-Karadoğan Mound excavation carried out in Samsun's Atakum district, Büyükoyumca District, Kurupelit Town in 2009, under the chairmanship of the Samsun Museum Directorate, it has been revealed where the city started to be established during the colonial period. Vessels such as bowls, kylixes, lekythoi, skyphoi, amphorae, plates, etc. were unearthed during the excavations. Most of the black and red figure ceramic fragments made with graffiti technique were unearthed in trench no. III, while the fragments of black glazed Attic ceramics were unearthed in trenches no. I and III. 28% of the black glazed ceramic fragments recovered from the Çakalca-Karadoğan Mound excavation were found in trench No. I and 22% were found in trench No. III. Black glazed ceramic fragments are respectively kylix, skyphoi, bowls, and lekythoi in trench No. I, and kylix, skyphoi, lekythoi, and bowl in trench No. III. These fragments are generally decorated with human, animal, mythological figures, and geometric motifs. Black and red-figure ceramic fragments dating back to the 6th century BC and 5th century BC were also brought to Amisos by Miletos colonists, as were terracotta statuettes and figurines.

**Keywords:** *Amisos, Çakalca-Karadoğan Mound, pottery, kylix, skyphos, lekythos.*

**Davut YİĞİTPAŞA**

Ondokuz Mayıs University, Samsun, Turkey  
davut.yigitpasa@omu.edu.tr

**Orhan Alper ŞİRİN**

Museum Directorate, Samsun, Turkey  
alpersirin84@gmail.com

DOI: 10.14795/j.v11i4.1143  
ISSN 2360 – 266X  
ISSN-L 2360 – 266X

## INTRODUCTION

The cities established on the shores of the Pontos Region have been in commercial and cultural communication with countries overseas since the earliest dates. Compared to other regions, the Black Sea came into contact with the Greek colonists at a later period<sup>2</sup>. In the face of the Lydians cutting off Miletos' land-based trade route and the restriction of a large part of its agricultural lands, Miletos found its alternative route to the Pontic coast, which had not yet been colonized by Greek cities<sup>3</sup>. Towards the end of the 8th century BC, Greek colonization movements gained momentum<sup>4</sup> and colonies began to be concentrated on the Pontic coast and were established in many important bays<sup>5</sup>. Greek colonies were established on the southern shores of the Black Sea, primarily in Trapezus, Comana Pontica,

<sup>1</sup> This study was produced from the master's thesis titled "Amisos from the Archaic Period to the Late Roman Period", completed in 2023 at Ondokuz Mayıs University, Graduate Education Institute, under the supervision of Assoc. Prof. Dr. Davut YİĞİTPAŞA.

<sup>2</sup> SOLOVYOV 2012, 380–385.

<sup>3</sup> ŞİRİN/KOLAĞASIOĞLU 2016, 5.

<sup>4</sup> MANSEL 1999, 124–125.

<sup>5</sup> ARSLAN 2007, 9, dp. 27.

Amaseia, Euchaita, Amisos, Sinope, Hadrianopolis, Amastris and Herakleia<sup>6</sup>. Miletos, one of the Ionian cities, spread over large areas on the Black Sea coast<sup>7</sup>. Miletos turned completely to the Black Sea from the 7th century BC onwards and first established the colonies of Sinope and Herakleia on the southern shores<sup>8</sup>. The establishment of colonies by the Megarians in Chalcedon and Byzantium caused the Milesians to advance further south by reaching the Black Sea<sup>9</sup>. Although it is generally stated that the colony settlements on the Black Sea coast were established by the Milesians, other Eastern Ionian cities such as Samos, Ephesos and Chios contributed to the colonization activities in the Black Sea Region<sup>10</sup>. Amisos was first colonized by the Milesians, then by Cappadocia and later by Athenochus and the Athenians, and the city's name was changed to "Peiraius"<sup>11</sup>. In response to this view, it is stated that Amisos was located in the country of Leukosyria and was a Phocaean colony and was founded 4 years before Herakleia<sup>12</sup>, while another researcher states that Amisos was a Hellenic city and was founded on the seaside, as a colony of the Athenians<sup>13</sup>.

The colonization process of Amisos started between the third quarter and the end of the 7th century BC<sup>14</sup>, the Miletos colonists came to Amisos in 564 BC with the aim of establishing a colony<sup>15</sup>. First, at the beginning of the 6th century BC, the Miletos colonists, who established a colony in Sinope, took control of the small settlement of Amisos and used it as the beginning of the trade route connecting the Black Sea and the interior of Anatolia; in the second stage, in the first half of the 6th century BC, the Cappadocians settled in Amisos; in the third stage, in the middle of the 6th century BC, the Cappadocian leader gave permission to the Phocaean to settle in order to protect them from the Medes and Persians, and the city grew and developed; in the last stage, in 437 BC, the Athenians coming from Sinope settled in Amisos and the name of the city was changed to "Peiraius"<sup>16</sup>.

The settlement area of the ancient city of Amisos, located at the intersection of the trade routes coming from Central Anatolia with the Black Sea, was built by the Miletos colonists who came to Amisos from Sinope at the beginning of the 6th century BC, in the flat area of Toraman Tepe, which was an acropolis, and in the eastern part extending to the sea. The view that the city began to be established on its slopes is generally accepted<sup>17</sup>. However, the historical data of Amisos, which is known to have been founded on Toraman Hill, does not date back to the Greek colonial period and does not go before the 4th century BC<sup>18</sup>. The most important factor in this is that Amisos, which was an independent city until 323 BC during the ten-year rule of Alexander the Great, came

under Pontic rule again after Alexander's death and with the emergence of the Mithradates kingdom in the late 4th century BC, the city's position changed both the existence of the new domination and the emergence of the Mithradates kingdom. The city is located in Toroman Tepe and its surroundings due to its geographical location being in a more strategic area<sup>19</sup>.

Based on the findings from the Archaic and Classical Periods unearthed during the Çakalca-Karadoğan Mound excavation carried out in Kurupelit Town, Büyükyoumca Neighborhood, Atakum District of Samsun in 2009, under the leadership of Samsun Museum Directorate, it was revealed where the city began to be established during the colonial period<sup>20</sup>.

Regarding the colonial process of the city, archaeological excavations carried out in 2009, in the mound called nowadays Çakalca-Karadoğan, revealed very important data about the location of the city in the Archaic Period (Fig. 1). Although Greek colonists established ports in the regions they came from and surrounded their settlements with walls, no remains have been found indicating that Amisos was surrounded by a wall during this period. In this case, while it is possible to say that there was no wall around the settlement, future archaeological excavations will clarify this issue<sup>21</sup>.

## 1. ÇAKALCA-KARADOĞAN MOUND

The rescue excavations carried out in the northeast of the mound, which is located approximately 10 km west of Toraman Tepe and approximately 200 m south of the coast, were carried out in an area measuring 20 × 93 m (Fig. 2). In the excavation area, 12 trenches divided into 10 m<sup>2</sup> squares were identified (Fig. 3). Among these trenches, trenches numbered I, III, IV, VI, VII and VIII, where traces of culture were found, were later combined and the work was completed in the other trenches. It is possible to discuss the excavations in two groups: architectural structure ruins and archaeological findings<sup>22</sup>.

### 1.1. Architectural Structure Ruins

Trenches IV, VI and VIII, where foundation structure remains were encountered, were combined. In this way, a three-room structure called "Structure A, B and C" extending in the east-west direction adjacent to each other was

<sup>6</sup> BILDE *et alii*. 2008, 153–156.

<sup>7</sup> TSETSKLADZE 2010, 78–80.

<sup>8</sup> HAMMOND 1959, 114–115.

<sup>9</sup> DURANT 1939, 134; BONDYREV 2006, 123.

<sup>10</sup> BOARDMAN 1988, 243; TSETSKHLADZE 1998, 36.

<sup>11</sup> STRABON XII, 3. 14.

<sup>12</sup> ATASOY 1997, 36.

<sup>13</sup> ARRIANUS, XV. 3.

<sup>14</sup> TSETSKHLADZE 2006, LXVI.

<sup>15</sup> TSETSKHLADZE 2010, 80.

<sup>16</sup> ATASOY 1997, 37–38.

<sup>17</sup> ATASOY 1997, 46.

<sup>18</sup> ŞİRİN/KOLAĞASIOĞLU 2016, 37.

<sup>19</sup> ATASOY 1997, 75; SUMMERER 1999, 24; KESKİN 2005, 24.

<sup>20</sup> ŞİRİN/KOLAĞASIOĞLU 2016, 6–40.

<sup>21</sup> AKYÜZ/KOLAĞASIOĞLU/ŞİRİN 2011, 117–134; ŞİRİN/KOLAĞASIOĞLU 2016; ŞİRİN 2020, 513–551.

<sup>22</sup> In addition to the archaeological evidence unearthed in the mound, it is necessary to mention some issues regarding the existence of the harbour in this period. The presence of large stones that were not of a certain smoothness was observed on the northeastern façade of the mound, where the excavation was carried out. These stones, located right on the border of the architectural ruins, must have acted as a breakwater to slow down the waves coming from the sea. In the 21st century, the artificial expansion of the land shelf by filling in the seashore has caused the city ruins to move away from the sea today. Generally speaking, when the available data is evaluated, it is quite possible that a port was established in the area where the mound is located. The place where life in the city becomes richer is Toraman Hill and its surroundings, 16 km east of the settlement today called Çakalca-Karadoğan Mound, where the city was first founded. In this case, the question of why the residential area of the city was moved comes to mind.

revealed. (Fig. 4). The rooms of the structure (space), which emerge at a depth of 2.24 – 3 m from the surface, extend gradually, descending at a level of approximately 0.70 m. The entrances of the adjacent rooms are in the southeast direction, and a corridor is also exposed in this section. The width of the 10 m long corridor is 1.60 m. The wall extending to the northwest of the corridor forms the outer wall of the rooms. There is a crepis in the section of the corridor, which has been damaged in places, between the room closest to the sea and the stone-laid wall of the room in the middle. The two-step crepis was made of three cut blocks placed side by side, measuring approximately 0.40 × 0.40 m. The rooms, measuring 7 × 9 m, with walls built with double rows of rough rubble stones, have a rectangular plan, close to each other.

## 1.2. Archaeological Finds

Almost all the vessels such as bowls, kylixes, lekythoi, skyphoi, amphorae, plates, etc. unearthed in the excavated trenches were found in broken fragments. The majority of the finds encountered in the area called the three-room space consist of broken terracotta stroter-calypter fragment, nails made of bronze, and coarse kitchen utensils. In trench no. III, which did not have any architectural form and was considered as a botros area, terracotta figurines, most of which were found in broken fragment and clusters, Attic ceramics with figures, fragment of black glazed ceramics, and ceramics with graffiti were unearthed. It contains a small number of finds, including various glass fragments, a gold applique, and a few coins.

### 1.2.1. Cybele and Kore Figurines

In the Ancient Period, people made offerings to the gods or goddesses they believed in within their religious structures. In addition to the large-sized marble statues used as votive materials<sup>23</sup>, economic power played a decisive role in the preference for low-cost terracotta figurines.

Terracotta Cybele and Kore statuettes found in the Çakalca-Karadoğan settlement, reflecting the sculpture art style of the Archaic Period of the Ionia Region, and examples of graffiti writings with votive content written in the Ionic style, reveal the religious belief of Amisos in the 6th century BC. These statuettes and graffiti writings reveal a belief in Cybele with Miletos' influence. This belief continued on the coasts of the Pontus Region after the Archaic Period.<sup>24</sup>

Almost all the terracotta figurines unearthed during the rescue excavation in Çakalca-Karadoğan Mound were found in a pile at a depth of 2.50 – 3 m from the surface in trench no. III. The figurines, which are generally made of brown paste and have traces of slip and red paint on their bodies, are all depictions of dressed women, but they are made in different molds due to differences in processing, posture, size, and clothing.

It is possible to divide the statuettes into two groups: standing female figures and those sitting on thrones<sup>25</sup>. It has been stated that the belief in Cybele could be a cult that

came to the people of Amisos from Phrygia<sup>26</sup>. It is known that Cybele statuettes were manufactured around Miletos<sup>27</sup>. Therefore, these statuettes may have been brought to Amisos by Miletos colonists.

In the first group, it is possible to place the figurines depicting the goddess Cybele, sitting on the throne, wearing a polo, and her head covered with a veil. The sitting style in these examples, the prominent embroidery of the breasts with the hands placed on the kneecaps, the appearance of the toes under the dress, the stylistic embroidery on the face, and the ceremonial stance symbolize the goddess Cybele (Fig. 5). The figurines in the other group include Kore figurines, some of which hold a bird in their right hand at chest level and stand on a carved base with both arms extended to the sides (Fig. 6). Additionally, the heads of figures with broken necks were also unearthed during the excavation. The heads of this figure, like other examples, must belong to the heads of Kore figurines (Fig. 7). In trench no. III, many headpieces, as well as base and body fragments of Cybele and Kore figurines, were unearthed (Fig. 8).

The fact that Cybele and Kore figurines were broken and found in bulk in a certain area indicates the existence of a religious place in this area<sup>28</sup>.

### 1.2.2. Black Figured and Red Figured Ceramic Fragments

Most of the ceramic fragments made with black figure and red figure techniques were unearthed in trench no. III. Human, animal, mythological figures and geometric motifs are engraved on these fragments of various vessels, generally kylix, lekythos, and alabastron. Black and red-figure ceramic fragments dating back to the 6th century BC and 5th century BC were also brought to Amisos by Miletos colonists, such as terracotta statuettes and figurines<sup>29</sup> (Fig. 9–10).

### 1.2.3. Graffiti Ceramic Fragments

Most of the graffitied ceramic fragments were engraved on black glazed kylix-shaped vessels and were unearthed in trench no. III, in the same area as the figurines (Fig. 11). Greek letters were inscribed on the vessels, “Δρυμὸ τὸ ἀνέθηκε τῆι Κυβ[η]βωι Κυβηβης” (Drymo dedicated this to Kubaba Kybebe), “..λήμιο τῆγ κύλικά ἀνέ” θηκε τῆι [Κυβηβωι]” (...lemio dedicated this kylix to Cybele). Personal names and votive expressions show that these samples were presented as offerings to Cybele by the vessel owners. In addition, the word “Μητροδ...” (Metro...) on one of the graffitied container fragments may be a personal name if written as “Μητροδόωρος” (Metrodoros), and if it was written as “Μητροδ[ς]” (Metros), it might have meant Meter, the Hellenized form of the Phrygian mother goddess Matar, or if it was thought to have continued as “Metron”, it might have described small religious centres or small settlements; the locations of which have not yet been determined, they were probably established along the coastline of the Black Sea. The fact that the letter “Ω” (Omega), among the letters

<sup>26</sup> SUMMERER 2014, 204–205.

<sup>27</sup> VON GRAEVE 2008, 345–346, 356, Fig. 3; BAYBURTLUOĞLU 2015, 118, 121, 138–139, 225–226, Pl. III/1–3, IV, floor no. 5–6.

<sup>28</sup> ŞİRİN/KOLAĞASIOĞLU 2016, 20–31, 37.

<sup>29</sup> ŞİRİN 2020, 522.

<sup>23</sup> AYBEK/TUNA/ATICI 2009, 5.

<sup>24</sup> ŞİRİN/KOLAĞASIOĞLU 2016, 37.

<sup>25</sup> ŞİRİN/KOLAĞASIOĞLU 2016, 20.

in the graffiti, is specific to the shape of the letters in the alphabet used by some epichoric (local) alphabets and twelve Ionian cities and colonies in the Archaic Period, reveals that these graffiti ceramic fragments were written by colonists from Miletos<sup>30</sup>.

#### 1.2.4. Black Glazed Ceramic Fragments

Black glazed Attic ceramic fragments unearthed in Çakalca-Karadoğan Mound were unearthed in trenches I and III (Fig. 3; Tab. 1–2). Early period finds were unearthed in both trenches to the north of the ruins of the three-room room. It has been stated that trench no. III could be a votive botros, and black glazed ceramic fragments were unearthed at a level of 2.50 to 3 m from the surface. The ruins in trench no. I belong to a two-phase structure, and the ceramic fragments were unearthed at a depth of 2 to 2.80 m from the surface, at the level of the ruins, at the lower level. The level of both trenches, which are approximately 8 m away from each other, is 0.20 m different. The majority of the finds recovered at almost the same level consist of kylix, bowl, skyphoi, and lekythoi fragments.

When we look at the ceramic fragments, they are all very thin examples made on a wheel. With the hand-turned fast wheel technique, the production speed increased, and thin, high-quality ceramics began to be seen. In the 7th and 6th centuries BC, the wheel production technique reached its highest level in the Greek civilization<sup>31</sup>. The ceramic fragments we mentioned are examples of similar forms, mass-produced on a speed wheel.

Fine sand is usually added to the paste of ceramics, while some do not contain any additives. Pincer firing and sooty firing techniques, which were used as the firing techniques of ceramics in the early periods<sup>32</sup>, were replaced by firing in domed kilns in the late periods<sup>33</sup>. Çakalca-Karadoğan ceramics were also fired in small-sized domed kilns of the Archaic Period<sup>34</sup>, and in the last stage of this firing, the glazes of the pots turned black and the firing phase was completed. Almost all of the ceramic fragments are black-glazed (painted) inside and outside. Ceramics with completely black glaze on the inside and outside have been encountered since the 6th century BC<sup>35</sup>. With the application of glaze, the outer surfaces of the ceramics were given a shiny appearance, and the vessels achieved a stylish appearance that appealed to the eye.

Similar black glazed vessels are found in settlements in the Thracian Region, Klazomenai<sup>36</sup>, Dydimi<sup>37</sup>, Samos with Daskyleion settlements<sup>38</sup>, and Maydos Kilisetepe Mound in Çanakkale<sup>39</sup>.

#### 1.2.4.1. Bowl Fragments (Cat. Nos. 1–7/Figs. 1–7)

A total of 7 black glazed bowl fragments were unearthed in trenches I and III during the Çakalca-Karadoğan Mound excavations. Bowl fragments have two different forms: outwardly slanted and inwardly slanted rims. It is possible to come across bowls in this form in addition to Attica, on the northern coasts of Pontus, in various centres of the Eastern Mediterranean, and in Anatolia<sup>40</sup>.

When we compare the shallow bowls with protruding rims in Cat. Nos. 1, 2, 3, 4 and 5 (Fig. 1–5) with similar finds<sup>41</sup>, it is possible to place them in the first quarter of the 4th century BC. When we compare the bowl with the inverted rim in Cat. No. 6 (Fig. 6), and the base fragment of the bowl in Cat. No. 7 with a potter's mark with a four-clustered palmette motif under the base (Fig. 7) with their similar forms<sup>42</sup>, it is possible to date them to the first half of the 5th century BC.

#### 1.2.4.2. Kylix Fragments (Cat. Nos. 8–30/Figs. 8–30)

The use of the kylix vessel form, which started to be produced in Athens in the 2nd quarter of the 6th century BC, continued until the 2nd quarter of the 4th century BC<sup>43</sup>. Kylixes are drinking vessels that appear in forms with horizontal double handles, high legs or without legs, and a flat body<sup>44</sup>. Kylix vessels are divided into three forms and there are different variants within these forms<sup>45</sup>. Footless kylixes, which were very rare in the Archaic Period, began to appear and be produced intensively after 480 BC when the footed kylixes lost their vitality<sup>46</sup>. While the early examples of Kylix forms were produced in a form with a lip, a deep body, and high legs, the body became shallower over time<sup>47</sup>. While in early kylix forms the handles extended horizontally to the body, over time these horizontal handles began to rise towards the mouth.

Many kylix fragments were found in the Çakalca-Karadoğan Mound excavation. In this study, a total of 23 kylix fragments in three groups, including bodies, handles and bases, were found in trenches I and III.

5 kylix handles rising up to the outside of the body are in the form of a wishbone, and the other 7 examples are examples of oval shaped handles rising up to the outside of the body. While some of the handles are completely painted with black glaze, the inner parts of some of them are left blank in paste colour and have not been subjected to any processing. When we compare the oval-shaped handle (Fig. 9) extending horizontally from the body on Cat. No. 9 with similar examples, we can date it to the second half of the 6th century BC<sup>48</sup>.

The oval-shaped handles rising up to the outside of the body on Cat. Nos. 8, 10, 11, 12, 13, 16 and 20 (Figs. 8, 10–13,

<sup>40</sup> ALKAÇ 2006, 22.

<sup>41</sup> SPARKES/TALCOTT 1970, Fig. 8, no 802, 817; COŞKUN 1999, 35–36, ch. 111–112; BAKIR 2002, 47; ALKAÇ 2006, 22, ch. 54–59

<sup>42</sup> CORBETT 1949, 343–344, Pl. 89, 94, no. 149, 157; SPARKES/TALCOTT 1970, Fig. 5, no. 471; MOORE/PHILIPPIDES/VON BOTHMER 1986, 297, Pl. 107, no. 1657; COŞKUN 1999, 16, ch. 53; SARAÇOĞLU 2021, ch. 79, xxxi.

<sup>43</sup> SCHREIBER 1999, 149.

<sup>44</sup> AKKURNAZ 2016, 99–100.

<sup>45</sup> SCHREIBER 1999, 149.

<sup>46</sup> SARAÇOĞLU 2021, 15.

<sup>47</sup> AKKURNAZ 2016, 99.

<sup>48</sup> MOORE/PHILIPPIDES/VON BOTHMER 1986, 301–302, 314, Pl. 111, 117, no. 1697, 1700, 1825; ÖZER 1998, 58, ch. 83, Fig. 13/83.

<sup>30</sup> ŞİRİN/KOLAĞASIOĞLU 2016, 32–37.

<sup>31</sup> SARAÇOĞLU 2021, 15.

<sup>32</sup> ESGİN 2014, 61–63.

<sup>33</sup> ÇAKIR 2011, 82.

<sup>34</sup> PEDLEY 2012, 193.

<sup>35</sup> SPARKES/TALCOTT 1970, 5–6.

<sup>36</sup> ERSOY 1993, 153, 236–238, 278, 296–298, Pl. 160/98, 260/105, 262/102–103, 312/114.

<sup>37</sup> TUCHELT 1973/74, 31. 139–168, abb. 5/31.

<sup>38</sup> SARAÇOĞLU 2021, 52.

<sup>39</sup> SARAÇOĞLU 2021, kn. 79, xxxi.

16, 20) indicate the second half of the 6th century BC when evaluated in terms of form and workmanship<sup>49</sup>. The wish-bone-shaped kylix handles rising up to the outside of the body on Cat. Nos. 14, 15, 17, 18 and 19 (Figs. 14–15, 17–19) can be dated to the first quarter of the 5th century BC<sup>50</sup>.

Of the base fragments belonging to the kylixes unearthed during the excavation, 7 of them have short legs and the other 3 kylixes have two different forms: without legs (with a base). It is possible to see short-legged kylixes in Attic productions in the last quarter of the 6th century BC<sup>51</sup>. The short-legged kylixes in Cat. Nos. 22, 23, 24, 25, 27, 28, and 29 (Figs. 22–25, 27–29) are evaluated in light of the examples processed in similar forms<sup>52</sup> to the second half of the 6th century BC. When the footless kylix bases in Cat. Nos. 21, 26 and 30 (Figs. 21, 26, 30) are compared to their counterparts,<sup>53</sup> it points to date to the first half of the 5th century BC.

#### 1.2.4.3. Skyphoi Fragments (Cat. Nos. 31–44/Figs. 31–44)

Skyphoi, the early examples of which were produced in Corinth and called “Kotyle”<sup>54</sup>, are drinking vessels with a wide mouth and a deep body, with two horizontal handles facing each other at mouth level<sup>55</sup>. These Attic-produced vessels, also produced with black glaze, became popular from the 6th century BC to the 4th century BC<sup>56</sup> and are generally used between 650–600 BC. There are various types of skyphoi, such as Corinthian, Type A (Attica), Type B, Subgeometric, Hermogenean<sup>57</sup>, Heron and miniature skyphoi<sup>58</sup>. The Attic-type skyphos began to appear in the mid-6th century BC<sup>59</sup>.

The skyphoi found in the Çakalca-Karadoğan Mound excavation were unearthed in trenches I and III. This study focused on a total of 14 skyphoi pieces evaluated in three groups as mouth-body, handle and bases.

When compared with similar examples<sup>60</sup>, handles not extending beyond the rim, as in Cat. Nos. 32 and 33, and the protruding mouth observed in the example in Cat. No. 37, appear in the mid-6th century BC<sup>61</sup>. It is possible to date the

finds in Cat. No. 31 (Fig. 31) as well as Cat. Nos. 32, 33 and 37 (Figs. 32–33, 37) to the first half of the 5th century BC.

A figurative fragment of a stool made with the black figure technique on the pedestal in Cat. No. 34 is similar to examples from the late 6th – early 5th centuries BC, unearthed in the same excavation area<sup>62</sup>. The examples with a central dot and decorated with a glazed circle under the plinth in Cat. No. 35 is a feature encountered towards the 5th century BC<sup>63</sup>. The skyphoi pedestals in Cat. Nos. 36, 38, 39, 40, 41, 42, 43, and 44 are completely black-glazed and most of them have thick walls. Attic-type skyphoi differ from Corinthian-type skyphoi with their thick walls, torus-shaped ring base, thick handles, and fully glazed body<sup>64</sup>. In the light of the form and processing characteristics in the light of its similarities in the Cat. No. 34 (Fig. 34)<sup>65</sup>, the fourth quarter of the 6th century BC – to the first quarter of the 5th century BC; It is possible to place the findings in the Cat. Nos. 35, 36, 38, 39, 40, 41, 42, 43 and 44 (Figs. 35–36, 38–43) to the first half of the 5th century BC<sup>66</sup>.

#### 1.2.4.4. Lekythoi Fragments (Cat. Nos. 45–50/Figs. 45–50)

Lekythoi are vessels with a single handle and a narrow neck, used for ritual purposes or as perfume and cosmetic containers. Generally, they were produced in two different types, long cylindrical and short wide bodies, and in various forms as variants of these types<sup>67</sup>. Lekythoi appeared in the form of vessels in the first half of the 6th century BC and were produced in black-figure form until the middle of this century<sup>68</sup>.

In the Çakalca-Karadoğan Mound Excavation, 6 black glazed lekythoi pieces were found in trenches I and III. One of them depicted a net motif (Fig. 3).

Outdoor cylindrical funnel mouth Cat. No. 45, and the extroverted funnel-shaped mouth Cat. No. 46 black glazed lekythoi fragments are the small and late-period variants of squat lekythoi. In the light of similar examples, it is possible to date the lekythoi fragments of Cat. Nos. 45 and 46 (Fig. 45–46) to the middle of the 5th century BC.

When the Cat. Nos. 47 and 50 dwarf lekythoi rules (Fig. 47 and Fig. 50) are evaluated with similar ones from the fourth quarter of the 5th century BC, it is possible to place it in the first quarter of the 4th century BC<sup>69</sup>.

The black glazed lekythoi bases in Cat. Nos. 48 and 49 are outdated and the side face is dough colour, and the early samples in this form are dated to the Late Archaic Period and

<sup>49</sup> BLEGEN/PALMER/YOUNG 1964, 210–211, Pl. 93, no. 250; MOORE/PHILIPPIDES/VON BOTHMER 1986, 301–302, 310, 314, Pl. 111, 114, 117, no. 1697, 1700, 1783, 1825; BROWNLEE 1989, 389, Pl. 69, no. 122; COŞKUN 1999, 10–11, 16, ch. 25, 48.

<sup>50</sup> SPARKES/TALCOTT 1970, Fig. 4, no. 413; COŞKUN 1999, 10–11, ch. 25; YILDIZ 2017, 296–297, items 2–5; KURAP 2020, 233–240, items 1–8.

<sup>51</sup> ÖZER 1998, 15.

<sup>52</sup> SPARKES/TALCOTT 1970, Fig. 4–5, no. 401, 469; MOORE/PHILIPPIDES/VON BOTHMER 1986, 301–302, 310, Pl. 111, 113–114, 119, no. 1678, 1697–1700, 1780, 1783–1784; ÖZER 1998, 16, ch. 20–21, Fig. 3/20–21; COŞKUN 1999, 10, 16, ch. 26, 55; DOMINGUEZ 1999, 309, Fig. 4; KURAP 2020, 233–240, ch. 1–8.

<sup>53</sup> SPARKES/TALCOTT 1970, Fig. 5, no. 471; MOORE/PHILIPPIDES/VON BOTHMER 1986, 297, Pl. 107, no. 1657; COŞKUN 1999, 16, ch. 53; KURAP 2020, 233–240, ch. 1–8.

<sup>54</sup> JANEWAY 2013, 120–121.

<sup>55</sup> AKKURNAZ 2016, 105–107.

<sup>56</sup> COŞKUN 1999, 4.

<sup>57</sup> SPARKES/TALCOTT 1970, 81–87, Fig. 4, Pl. 14–17, no. 303–354, 360–377.

<sup>58</sup> AKKURNAZ 2016, 106–107.

<sup>59</sup> SPARKES/TALCOTT 1970, 84.

<sup>60</sup> CORBETT 1949, 317–320, Pl. 85, no. 20, 24, 27; SPARKES/TALCOTT 1970, Fig. 4, no. 342; MOORE/PHILIPPIDES/VON BOTHMER 1986, 295, Pl. 107, no. 1630; BROWNLEE 1995, 364–365, 368–369, Pl. 82–83, 86, no. 235–236, 240, 253, 256; COŞKUN 1999, 7, 23, ch. 6–7, 14–17, 81.

<sup>61</sup> SPARKES/TALCOTT 1970, Fig. 6, no. 621.

<sup>62</sup> ŞİRİN 2020, 542, Fig. 55.

<sup>63</sup> COŞKUN 1999, 6.

<sup>64</sup> COŞKUN 1999, 6.

<sup>65</sup> MOORE/PHILIPPIDES/VON BOTHMER 1986, 294, Pl. 107, no. 1628; BROWNLEE 1995, 369–370, Pl. 87, no. 260; COŞKUN 1999, 7, no. 14–17; ŞİRİN 2020, 542, Fig. 55.

<sup>66</sup> BLEGEN/PALMER/YOUNG 1964, 235, Pl. 46, no. 320/5; SPARKES/TALCOTT 1970, Fig. 6, no. 593; MOORE/PHILIPPIDES/VON BOTHMER 1986, 288, 294–295, Pl. 104, 107, no. 1567, 1628–1630; BROWNLEE 1987, 80–82, Fig. 1, Pl. 13; 1995, 369–370, Pl. 87, no. 260; COŞKUN 1999, 7, 16, 21, ch. 14–17, 53, 77.

<sup>67</sup> SPARKES/TALCOTT 1970, 151–153, Fig. 11, Pl. 38, no. 1097–1111, 1113, 1120–1141; SCHEREIBER 1999, 171–185.

<sup>68</sup> SCHEREIBER 1999, 171.

<sup>69</sup> CORBETT 1949, 313–314, Pl. 81, no. 9–11; SPARKES/TALCOTT 1970, 88, Pl. 18, no. 1123, 1128; COŞKUN 1999, 63, n. 177; KABA/VURAL 2018, 179, 181, Fig. 6; ÖZ/ABAY 2022, 73, ch. 5–8.

late samples are dated to the second quarter of the 5th century BC<sup>70</sup>. Compared to various examples in form and processing, it is possible to date the lekythoi fragments of the Cat. Nos. 48 and 49 to the first half of the 5th century BC<sup>71</sup>.

The black glazed ceramic fragments in trench I, discussed in the catalogue, were unearthed at depth from -2,80 m to -2 m. Ceramic fragments dating from the second half of the 6th century BC to the first quarter of the 4th century BC were unearthed in the area where the two-phase stone series was found in the trench. Black glazed ceramic fragments in the trench I, as well as black and red-figure ceramic fragments found in the same trench, dated between the 6th century BC and the late 5th century BC and unearthed at the level of -2.80 to -1.50 m,<sup>72</sup> reveal the same dates.

The black glazed ceramic fragments found in trench no. III were unearthed at a level of -3 to -2.50 m from the surface, 50 cm deeper than trench no. I. The ceramic fragments date from the second half of the 6th century BC to the first quarter of the 4th century BC. They are unearthed in the same area as the terracotta Cybele and Kore figurines found in the trench, dated to the mid-6th century BC, at the level of -3 to -2.46/-2.65 m<sup>73</sup>. In addition, the ceramic fragments found in the catalogue, point to a similar period with the black glazed ceramic fragments found in trench no. III which had Greek letters<sup>74</sup>. The black firnis ceramic fragments in Figs. 51-54, which are unearthed in trenches I and III and whose levels of finds are seized in the same depth range, are also dated to the same time interval.

## EVALUATION AND CONCLUSION

The first foundation of the city of Amisos was established by colonists from Miletos in the mound called Çakalca-Karadoğan, located in Kurupelit Locality, Büyükoyumca District, Atakum district of today's Samsun. Ancient writers suggest that Amisos went through stages of foundation by different people in different periods. Archaeological data also confirms this. The first foundation of the city took place in 564 BC with the colonization of Miletos. However, in order for colonists to settle and achieve a permanent status before this date, they must have come to this region before the city was founded. The findings of terracotta Cybele and Kore figurines, graffitied ceramic fragments and black-figured ceramics found in the Çakalca-Karadoğan Mound excavation, where archaeological data regarding the colonization period of Amisos were unearthed, provide evidence that the city may have been founded by the Miletos colonists in 564 BC. In addition, the fact that some of the findings date back to the 6th century BC shows that the Miletos colonists came to the region in the early stages of this period and established the city over time.

The northern part of Asia Minor, which was captured by the Persians in 546 BC, joined the satraps of Cappadocia, and the change in the population structure and the construction

of new structures in the region must have caused the expansion of the borders of Amisos when it was first founded. The fact that the Athenians came from Sinope in 437 BC and changed the name of Amisos to "Peiraieos" shows that the Athenians had a say Amisos city.

The fact that the Attic black glazed bowl, kylix, skyphoi and lekythoi fragments unearthed in Çakalca-Karadoğan Mound and evaluated in the catalogue date the city to between the second half of the 6th century BC and the first quarter of the 4th century BC supports the establishment of the city by Miletos' colonists. The density of the findings from the second half of the 6th century BC in the city decreases towards the 5th and 4th centuries BC. The fact that the findings from the 3rd and 2nd centuries BC found in the excavation are considerably reduced indicates that the commercial life in the city lost its vitality in these centuries.

Very important issues such as the liveliness of port trade, ease of transportation with the inner regions, the ability to follow the coastal route, and the change of dominance in the region show that Amisos was located in Toraman Hill and its surroundings, 16 km east of the area where it was first established in Çakalca-Karadoğan Mound, and the second foundations of the city were laid here.

Most of the black-figure, red-figure and graffiti ceramics unearthed at Çakalca-Karadoğan Mound were found in trench number III, while black glazed attic ceramics were found in trenches number I and III. 28% of the black glazed ceramic fragments recovered from the Çakalca-Karadoğan Mound excavation were recovered from Trench I, and 22% from Trench III (Tab. 1). Black glazed ceramic fragments are numerically densely found in trench I as kylix, skyphoi, bowls, lekythoi, and in trench III as kylix, skyphoi, lekythoi, and bowls (Tab. 2). Almost all of the ceramic fragments are black glazed both inside and outside. Ceramics are mass-produced examples of similar shapes made on a fast-rotating wheel. The majority of the findings consist of kylix, bowl, skyphoi, alabastron and lekythoi fragments. These fragments are generally decorated with human, animal, mythological and geometric motifs. Black-figure and red-figure ceramic fragments dating from the 6th century BC to the 5th century BC were also brought to Amisos by Miletos' colonists, as were terracotta statuettes and figurines. Ceramics with completely black glaze on the inside and outside have been encountered since the 6th century BC.

## REFERENCES

### ANCIENT SOURCES

ARRIANUS 2005

Arrianus, *Arriani Periplus Ponti Euxini: Arrianus'un Karadeniz Seyahati*, Arslan M. (Trans.). (İstanbul).

STRABON 2015

Strabon, *Antik Anadolu Coğrafyası*, (Vol. XII, XIII, XIV), Pekman A. (Trans.). (İstanbul).

### MODERN SOURCES

AKKURNAZ 2016

Akkurnaz, F. B., *Eski Yunan ve Roma kapları ve işlevleri*, Unpublished Master Thesis, Adnan Menderes Üniversitesi, Sosyal Bilimler Enstitüsü, Aydın.

<sup>70</sup> COŞKUN 1999, 62.

<sup>71</sup> BROWNLEE 1995, 353-355, Pl. 74-75, no. 191, 195-196; COŞKUN 1999, 62, ch. 174-175; ÖZ/ABAY 2022, 70, ch. 1-2.

<sup>72</sup> ŞİRİN 2020, 538, 540-541, 544-545, Figs. 29, 40, 52, 61, 65.

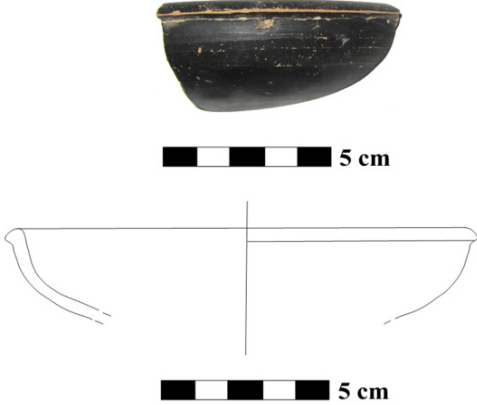


<sup>73</sup> ŞİRİN/KOLAĞASIOĞLU 2016, 31, tab. 1.

<sup>74</sup> ŞİRİN/KOLAĞASIOĞLU 2016, 36, tab. 2.

- AKYÜZ *et alii* 2011  
Akyüz, U./Kolağasıoğlu, M./Şirin, O.A., Samsun ili Atakum ilçesi, Çakalca (Karadoğan Höyük) Kurupelit kurtarma kazısı 2009, 19. *Müze Çalışmaları ve Kurtarma Kazıları Sempozyumu*, T.C. Kültür ve Turizm Bakanlığı Kültür Varlıkları ve Müzeler Genel Müdürlüğü, Ankara, (Ankara: Kültür Varlıkları ve Müzeler Genel Müdürlüğü Yayınları), 117–134.
- ALKAÇ 2006  
Alkaç, E., *Nagidos Antik Kentinin Klasik Dönem seramiği*, Unpublished Master Thesis, Mersin Üniversitesi, Sosyal Bilimler Enstitüsü Arkeoloji ABD, Mersin.
- ARSLAN 2007  
Arslan, M., *Mithradates VI Eupator: Roma'nın büyük düşmanı* (İstanbul: Odin Yayıncılık).
- ASLAN 2019  
Aslan, A., *Miletos Nekropolisinde DT2012.2M Mezarı seramik buluntuları*, Unpublished Master Thesis, Pamukkale Üniversitesi, Sosyal Bilimler Enstitüsü, Denizli.
- ATASOY 1997  
Atasoy, S., *Amisos Karadeniz kıyısında antik bir kent* (Samsun: Samoto Otomobil/Koç Holding).
- AYBEK *et alii* 2009  
Aybek, S./Tuna, T./Atıcı, M., *İzmir Tarih ve Sanat Müzesi heykel kataloğu* (Ankara: Kültür Varlıkları ve Müzeler Genel Müdürlüğü Yayınları).
- BAKIR 2002  
Bakır, G., 2000 Klazomenai kazısı, 23. *Kazı Sonuçları Toplantısı*, Cilt: 1, T.C. Kültür ve Turizm Bakanlığı Kültür Varlıkları ve Müzeler Genel Müdürlüğü, Ankara, (Ankara: Kültür Bakanlığı Yayınları), 41–54.
- BAYBURTLUOĞLU 2015  
Bayburtluoğlu, C., *Erythrai, C/I-II* (Ankara: Türk Tarih Kurumu Basımevi).
- BILDE *et alii* 2008  
Bilde, P. G./Bogh, B./Handberg, S./Hojte, J.M./Nielsing, J.S./Tatiana, N./Stolba, V.F., *Archaeology in the Black Sea Region in Classical Antiquity 1993–2007, Reprinted Archaeological Reports 54 (2007–2008)* (Greece: The Council of the Society for the Promotion of Hellenic Studies and the Council of the British School at Athens), 115–173.
- BLEGEN *et alii* 1964  
Blegen, C. W./Palmer, H./Young, R. S., *Corinth, Vol: 13, The North Cemetery* (Greece: The American School of Classical Studies at Athens).
- BOARDMAN 1988  
Boardman, J., *The Greeks Overseas: Their Early Colonies and Trade* (London: Thames and Hudson).
- BONDYREV 2006  
Bondyrev, I. V., *Colonization of the Black Sea by the Ancient Greeks and its ecological consequences*. In: M. Compareti, P. Raffetta and G. Scarzia (eds.), *Eran ud Aneran: Studies Presented to Boris Il'ic Marsak on the Occasion of His 70th Birthday* (Libreria Editrice Cafoscara), 123–128.
- BROWNLEE 1987  
Brownlee, A. B., *Attic Black Figure from Corinth: I, Hesperia* 56, 73–95.
- BROWNLEE 1989  
Brownlee, A. B., *Attic Black Figure from Corinth: II, Hesperia* 58, 361–395.
- BROWNLEE 1995  
Brownlee, A. B., *Attic Black-Figure from Corinth: III, Hesperia* 64/3, 337–382.
- CORBETT 1949  
Corbett, P. E., *Attic Pottery of the later fifth century from the Athenian Agora, Hesperia* 18/4, 298–351.
- COŞKUN 1999  
Coşkun, G., *Daskyleion siyah fırınlı Attika Seramikleri*, Unpublished Master Thesis, Ege Üniversitesi, Sosyal Bilimler Enstitüsü, İzmir.
- ÇAKIR 2011  
Çakır, H. İ., *Arkaik Dönem Yunan seramiklerinin incelenmesi ve günümüz yorumlamaları*, Unpublished Master Thesis, Kocatepe Üniversitesi, Sosyal Bilimler Enstitüsü, Afyonkarahisar.
- DURANT 1939  
Durant, W., *The life of Greece* (New York: Published by Simon & Schuster).
- DOMINGUEZ 1999  
Dominguez, A.J., *Hellenisation in Iberia?: The Reception of Greek products and influences by the Iberians*. In: Tsetschladze G. R. (ed.), *Ancient Greeks West and East* (Leiden: Brill), 301–329.
- ERSOY 1993  
Ersoy, Y.E., *Clazomenae: The Archaic settlement*, Unpublished PhD Thesis, Bryn Mawr College.
- ESGİN 2014  
Esgin, Ö., *Siyah Figür ve Kırmızı Figür tekniğinin serigrafi ile seramik form yüzeylerinde uygulanması*, Unpublished Master Thesis, Süleyman Demirel Üniversitesi, Güzel Sanatlar Enstitüsü, Isparta.
- HAMMOND 1959  
Hammond, N.G.L., *A History of Greece (to 322 BC)* (Oxford: Published by Oxford at the Clarendon Press).
- JANEWAY 2013  
Janeway, B., *Cultural transition in the Northern Levant during the Early Iron Age as reflected in the Aegean-Style Pottery at Tell Tayinat*, Unpublished PhD Thesis, University of Toronto, Toronto.
- KABA/VURAL 2018  
Kaba, H./Vural, H., *Arkeoloji ile geçen yetmiş yıl-Kazılar ışığında Sinop Arkeolojisi*. In: Kıran, Ö. (ed.), *Sosyal Bilimciler Gözüyle Sinop* (Ankara: Berikan Yayıncılık), 439–464.
- KESKİN 2005  
Keskin, A., *Amisos Şehrinin Tarihi: Amisos ve çevresi* (Berlin: GRIN Verlag Publisher).
- KURAP 2020  
Kurap, G., *Ainos (Enez) Siyah Figürlü kylikleri*, Unpublished PhD Thesis, İstanbul Üniversitesi, Sosyal Bilimler Enstitüsü, İstanbul.
- MANSEL 1999  
Mansel, A.M., *Ege ve Yunan Tarihi* (Ankara: Türk Tarih Kurumu Yayınları).
- MOORE *et alii* 1986  
Moore, M. B./Philippides, M. Z. P./Von Bothmer, D., *Attic Black-Figured Pottery (The Athenian Agora XXIII)* (Princeton: The American School of Classical Studies at Athens).
- ÖZ/ABAY 2022  
Öz, C./Abay, N., *Arkaik ve Klasik Dönem'e (MÖ VI–IV. yüzyıl) Ait Siyah ve Kırmızı Figürlü bir grup lekythos, Akdeniz İnsani Bilimler Dergisi* 12, 69–78.
- ÖZER 1998  
Özer, B., *Datça Burgaz Kazılarında ele geçen Arkaik Dönem bezemeli seramikleri*, Unpublished Master Thesis, Ege Üniversitesi, Sosyal Bilimler Enstitüsü, İzmir.
- PEDLEY 2012  
Pedley, J.G., *Greek Art and Archaeology* (London: Prentice Hall).
- SARAÇOĞLU 2021  
Saraçoğlu, B., *Maydos Kilisetepe Höyüğü Arkaik Dönem boyalı seramikleri*, Unpublished Master Thesis, Onsekiz Mart Üniversitesi, Lisansüstü Eğitim Enstitüsü, Çanakkale.
- SCHEREIBER 1999  
Schreiber, T., *Athenian Vase Construction: A Potter's analysis*.

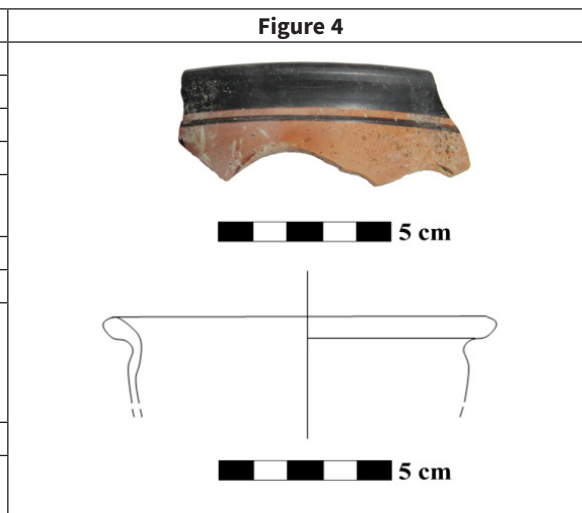
- B. Gilman (ed.), The J. Paul Getty Museum. (Malibu-California: Christopher Hudson).
- SOLOVYOV 2012  
Solovyov, S., Karadeniz'de Yunan Kolonileri. In: Karul, N. (ed.), *Son Tunç Çağı'ndan Helenistik Döneme Anadolu'nun Arkeoloji Atlası 2* (Doğa Burda Dergi Yayınları), 380–385.
- SPARKES/TALCOTT 1970  
Sparkes, B. A./Talcott, L., *Black and Plain Pottery of the 6th, 5th, and 4th Centuries B.C.* (Greece: The American School of Classical Studies at Athens).
- SUMMERER 1999  
Summerer, L. Hellenistische Terrakotten aus Amisos: ein Beitrag zur Kunstgeschichte des Pontosgebietes. *Geographica Historica* 13 (Stuttgart: Franz Steiner Verlag).
- SUMMERER 2014  
Summerer, L., Topographies of Worship in Northern Anatolia. In: Bekker-Nielsen, T. (ed.), *Geographica Historica* 13 (Stuttgart: Franz Steiner Verlag), 189–213.
- ŞİRİN/KOLAĞASIOĞLU 2016  
Şirin, O. A./Kolağasıoğlu, M., *Çakalca-Karadoğan Höyüğü: Arkaik Dönemde Amisos ve Kybele kültü* (Samsun: SAMTAB Yayınları).
- ŞİRİN 2020  
Şirin, O. A., Çakalca-Karadoğan Höyüğü Kurtarma Kazısı: Amisos'ta Miletos Kolonizasyonuna dair buluntular, *Amisos* 5/9, 513–551.
- TSETSKHLADZE 1998  
Tsetskhladze, G. R., Greek Colonisation of the Black Sea Area: Stages, Models, and Native Population. In: Tsetskhladze G. R. (ed.), *The Colonisation of the Black Sea Area* (Stuttgart: Franz Steiner Verlag), 9–69.
- TSETSKHLADZE 2006  
Tsetskhladze, G. R., Revisiting Ancient Greek Colonisation. In: Tsetskhladze, G. R. (ed.), *Greek Colonisation an Account of Greek Colonies and Other Settlements Overseas*, Vol. 1 (Leiden: Brill).
- TSETSKHLADZE 2010  
Tsetskhladze, G. R., Hellen Kolonizasyonu: Karadeniz, *Aktüel Arkeoloji* 18, 76–83.
- TUCHELT 1973/74  
Tuchelt, K., Didyma, Bericht über die Arbeiten 1972/73, *Istanbuler Mitteilungen* 23(24), 139–168.
- VON GRAEVE 2008  
Von Graeve, V., 2006 Yılı Milet Çalışmaları. 29. *Kazı Sonuçları Toplantısı*. Cilt: 3, T.C. Kültür ve Turizm Bakanlığı Kültür Varlıkları ve Müzeler Genel Müdürlüğü, Ankara, (Ankara: Kültür Bakanlığı Yayınları), 343–360.
- YILDIZ 2017  
Yıldız, V., Anamur Arkeoloji Müzesi'nde bulunan Kelenderis kökenli bir grup Siyah Firnisli seramik, *MCBÜ Sosyal Bilimler Dergisi* 15/3, 281–316.
- YİĞİT 2007  
Yiğit, H., *Çanakkale Müzesi Calvert Koleksiyonu'nda saklanan boyunlu lekythoslar*, Unpublished Master Thesis, Ankara Üniversitesi, Sosyal Bilimler Enstitüsü, Ankara.

CATOLOGUE<sup>75</sup>

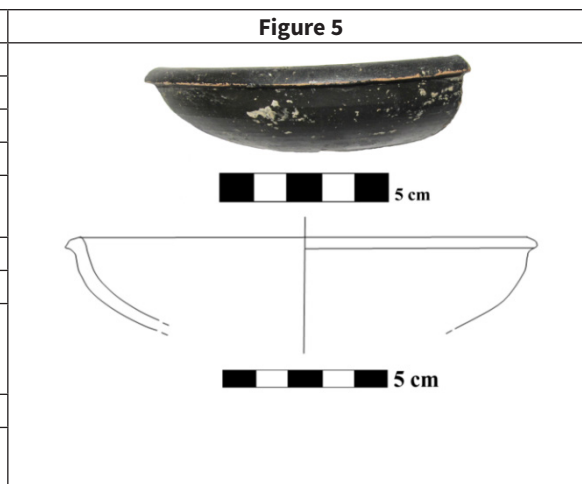
<p><b>Cat. No: 1</b></p> <p><b>Excavation No:</b> ÇK-1</p> <p><b>Name of the work:</b> Bowl Fragment</p> <p><b>Cooking Condition:</b> Well Cooked</p> <p><b>Found Location:</b> Trench no. I / - 2 m</p> <p><b>Dimensions:</b> Mouth Diameter: 14 cm, Measurable Height: 3.6 cm, Body Thickness: 0.3 cm</p> <p><b>Clay Additive:</b> Fine Sand Added</p> <p><b>Firnis / Clay Colour:</b> NCS S 9000-N / NCS S 1070-Y30R</p> <p><b>Description:</b> Making on the wheel. It has brick-coloured paste, black glaze on the inner and outer surfaces, thin walls, an everted rim, and a flat and wide body descending towards the base.</p> <p><b>Date:</b> First quarter of the 4th century BC</p> <p><b>Similar:</b> Sparkes/Talcott 1970, fig. 8, no 802; Coşkun 1999, kn. 111-112; Bakır 2002, 47; Alkaç 2006, kn. 54-59.</p>	<p style="text-align: center;"><b>Figure 1</b></p> 
<p><b>Cat. No: 2</b></p> <p><b>Excavation No:</b> ÇK-2</p> <p><b>Name of the work:</b> Bowl Fragment</p> <p><b>Cooking Condition:</b> Well Cooked</p> <p><b>Found Location:</b> Trench no. III / - 2,50 m</p> <p><b>Dimensions:</b> Mouth Diameter: 13 cm, Measurable Height: 4 cm, Body Thickness: 0.4 cm</p> <p><b>Clay Additive:</b> Fine Sand Added</p> <p><b>Firnis / Clay Colour:</b> NCS S 9000-N / NCS S 1060-Y30R</p> <p><b>Description:</b> Making on the wheel. It has a light brick-coloured paste, black glaze on the inside and outside, thin walls, an everted rim, a flat and wide body descending towards the base, and a ring base.</p> <p><b>Date:</b> First quarter of the 4th century BC</p> <p><b>Similar:</b> Sparkes/Talcott 1970, fig. 8, no 817; Coşkun 1999, kn. 111-112; Bakır 2002, 47; Alkaç 2006, kn. 54-59.</p>	<p style="text-align: center;"><b>Figure 2</b></p> 
<p><b>Cat. No: 3</b></p> <p><b>Excavation No:</b> ÇK-3</p> <p><b>Name of the work:</b> Bowl Fragment</p> <p><b>Cooking Condition:</b> Well Cooked</p> <p><b>Found Location:</b> Trench no. III / - 2,50 m</p> <p><b>Dimensions:</b> Mouth Diameter: 10 cm, Measurable Height: 12.8 cm, Body Thickness: 0.2 cm</p> <p><b>Clay Additive:</b> Fine Sand Added</p> <p><b>Firnis / Clay Colour:</b> NCS S 9000-N / NCS S 1060-Y30R</p> <p><b>Description:</b> Making on the wheel. It has a light brick-coloured paste, black glaze on the inner and outer surfaces, thin walls, an everted rim, and a body that narrows downwards.</p> <p><b>Date:</b> First quarter of the 4th century BC</p> <p><b>Similar:</b> Sparkes/Talcott 1970, fig. 8, no 817; Coşkun 1999, kn. 111-112; Bakır 2002, 47; Alkaç 2006, kn. 54-59.</p>	<p style="text-align: center;"><b>Figure 3</b></p> 

<sup>75</sup> The material of the ceramic pieces in the catalogue is terracotta. In addition, the Natural Colour System (NCS) catalogue was used for the colours.

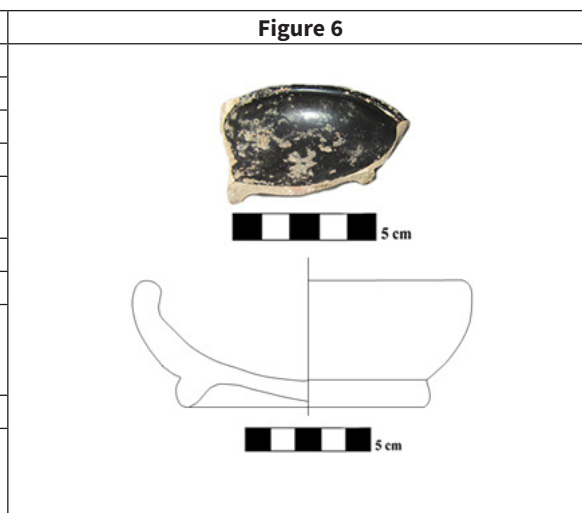
<b>Cat. No:</b> 4
<b>Excavation No:</b> ÇK-4
<b>Name of the work:</b> Bowl Fragment
<b>Cooking Condition:</b> Well Cooked
<b>Found Location:</b> Trench no. I / - 2 m
<b>Dimensions:</b> Mouth Diameter: 12 cm, Measurable Height: 4 cm, Body Thickness: 0.3 cm
<b>Clay Additive:</b> None
<b>Firnis / Clay Colour:</b> NCS S 9000-N / NCS S 1060-Y30R
<b>Description:</b> Making on the wheel. It has a light brick-coloured paste, a black glaze on the rim and inner surface, an everted rim, and a wide body. There is a spiral ring decoration made of black glaze under the rim.
<b>Date:</b> First quarter of the 4th century BC
<b>Similar:</b> Sparkes/Talcott 1970, fig. 8, no 817; Coşkun 1999, kn. 111-112; Bakır 2002, 47; Alkaç 2006, kn. 54-59.



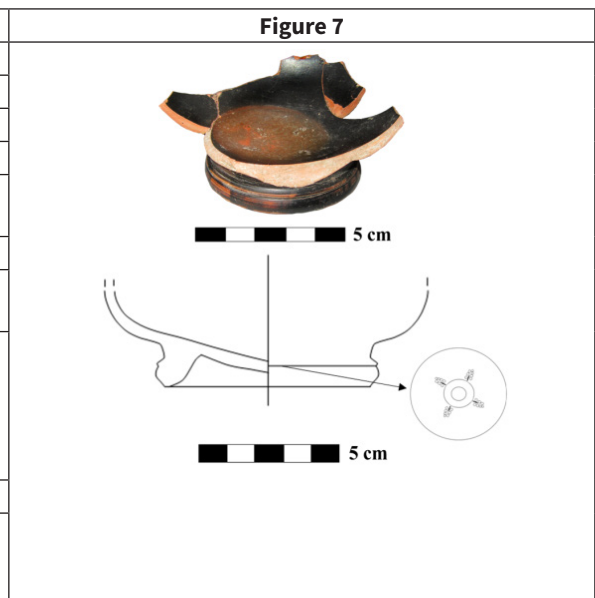
<b>Cat. No:</b> 5
<b>Excavation No:</b> ÇK-5
<b>Name of the work:</b> Bowl Fragment
<b>Cooking Condition:</b> Well Cooked
<b>Found Location:</b> Trench no. I / - 2 m
<b>Dimensions:</b> Mouth Diameter: 14 cm, Measurable Height: 3 cm, Body Thickness: 0.3 cm
<b>Clay Additive:</b> None
<b>Firnis / Clay Colour:</b> NCS S 9000-N / NCS S 1060-Y20R
<b>Description:</b> Making on the wheel. It has light brick-coloured paste, black glaze on the inner and outer surfaces, an everted rim, and a flat and flat body.
<b>Date:</b> First quarter of the 4th century BC
<b>Similar:</b> Sparkes/Talcott 1970, fig. 8, no 817; Coşkun 1999, kn. 111-112; Bakır 2002, 47; Alkaç 2006, kn. 54-59.



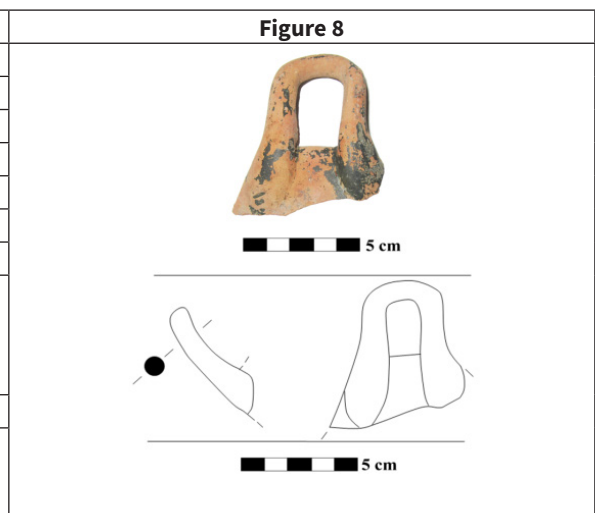
<b>Cat. No:</b> 6
<b>Excavation No:</b> ÇK-6
<b>Name of the work:</b> Bowl Fragment
<b>Cooking Condition:</b> Well Cooked
<b>Found Location:</b> Trench no. III / - 2,50 m
<b>Dimensions:</b> Pedestal Diameter: 7 cm - Height: 3.3 cm - Thickness: 0.4 cm
<b>Clay Additive:</b> Fine Sand Added
<b>Firnis / Clay Colour:</b> NCS S 9000-N / NCS S 2070-Y10R
<b>Description:</b> Making on the wheel. It has brick-coloured paste, black glaze on the inner and outer surfaces, an inverted rim, and flat body, and a ring base.
<b>Date:</b> First half of the 5th century BC
<b>Similar:</b> Sparkes/Talcott 1970, fig. 5, no 471; Moore/Philippides/Von Bothmer 1986, pl. 107, no. 1657; Coşkun 1999, kn. 53; Saraçoğlu 2021, kn. 79, xxxi.



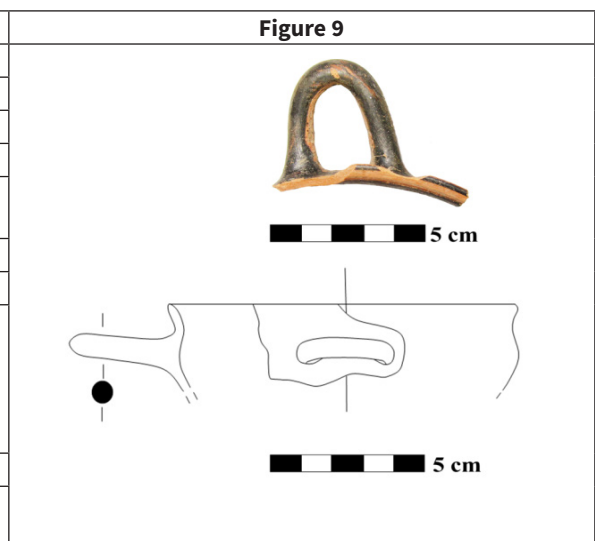
<b>Cat. No: 7</b>
<b>Excavation No:</b> ÇK-7
<b>Name of the work:</b> Bowl Fragment
<b>Cooking Condition:</b> Well Cooked
<b>Found Location:</b> Trench no. III / - 2,50 m
<b>Dimensions:</b> Pedestal Diameter: 7 cm – Measurable Height: 4 cm – Thickness: 0.2 cm
<b>Clay Additive:</b> None
<b>Firnis / Clay Colour:</b> NCS S 9000-N – NCS S2070-Y40R / NCS S 1060-Y30R
<b>Description:</b> Making on the wheel. It has brick-coloured paste, black glaze on the inner and outer surfaces, a flat body, and a ring base. The colour of the black glaze inside the base is brown. Inside the base, there is a potter's mark with four palmette motifs engraved around two concentric spiral rings.
<b>Date:</b> First half of the 5th century BC
<b>Similar:</b> Sparkes/Talcott 1970, fig. 5, no 471; Corbett 1949, pl. 89, 94, no. 149, 157; Moore/Philippides/Von Bothmer 1986, pl. 107, no. 1657; Coşkun 1999, kn. 53.



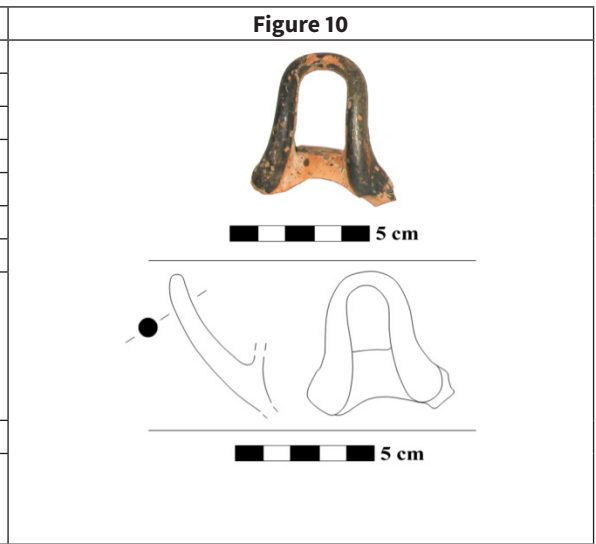
<b>Cat. No: 8</b>
<b>Excavation No:</b> ÇK-8
<b>Name of the work:</b> Kylix Fragment
<b>Cooking Condition:</b> Well Cooked
<b>Found Location:</b> Trench no. I / - 2,80 m
<b>Dimensions:</b> Measurable Length: 7 cm, Handle Thickness: 1.1 cm
<b>Clay Additive:</b> Fine Sand Added
<b>Firnis / Clay Colour:</b> NCS S 9000-N / NCS S 1060-Y30R
<b>Description:</b> The handle has a round shape, shaped by hand and added to the body later. It has a light brick-colored paste and black glaze on the inner and outer surfaces. The tip of the handle is slightly upturned and there are heavy flakes on the glaze.
<b>Date:</b> Second half of the 6th century BC
<b>Similar:</b> Blegen/Palmer/Young 1964, pl. 93, no. 250; Moore/Philippides/Von Bothmer 1986, pl. 111, 114, 117, no. 1697, 1700, 1783, 1825; Brownlee 1989, pl. 69, no. 122; Coşkun 1999, kn. 25, 48.



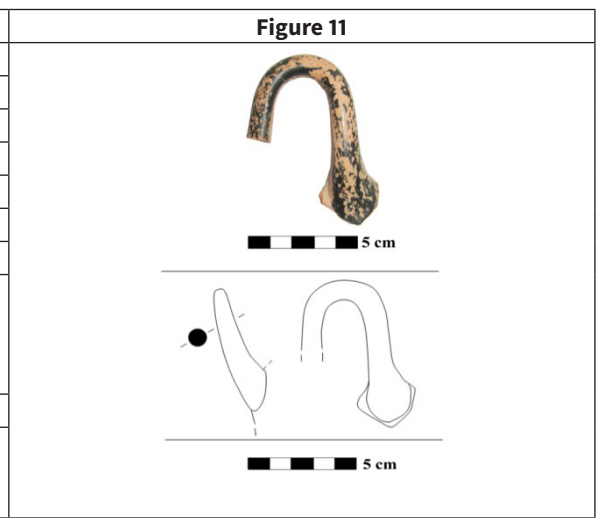
<b>Cat. No: 9</b>
<b>Excavation No:</b> ÇK-9
<b>Name of the work:</b> Kylix Fragment
<b>Cooking Condition:</b> Well Cooked
<b>Found Location:</b> Trench no. I / - 2,80 m
<b>Dimensions:</b> Mouth Diameter: 12 cm, Measurable Length: 2.5 cm, Handle Thickness: 0.8 cm
<b>Clay Additive:</b> Fine Sand Added
<b>Firnis / Clay Colour:</b> NCS S 9000-N / NCS S 1060-Y30R
<b>Description:</b> The handle has a round shape, which was shaped by hand and added to the body later. It has a light brick-coloured paste, black glaze on the outer surface, thin walls, and an everted rim. The handle is placed horizontally on the body and there are spills on the glaze.
<b>Date:</b> Second half of the 6th century BC
<b>Similar:</b> Moore/Philippides/Von Bothmer 1986, pl. 111, 117, no. 1697, 1700, 1825; Özer 1998, kn. 83, şek. 13/83.



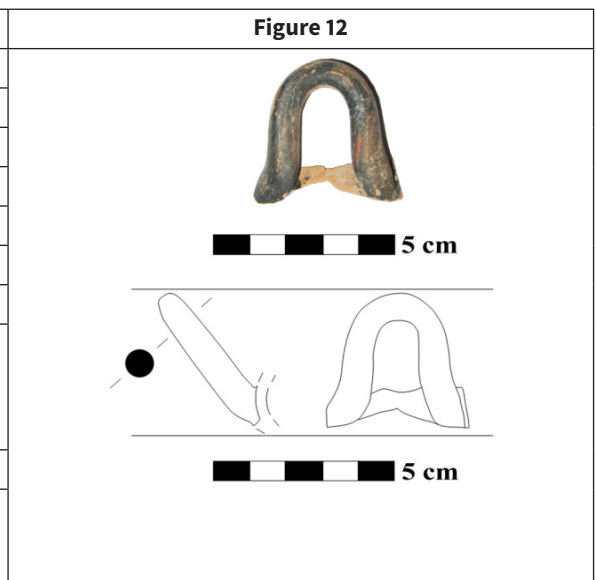
<b>Cat. No: 10</b>
<b>Excavation No:</b> ÇK-10
<b>Name of the work:</b> Kylix Fragment
<b>Cooking Condition:</b> Well Cooked
<b>Found Location:</b> Trench no. I / - 2,80 m
<b>Dimensions:</b> Measurable Length: 5.7 cm, Handle Thickness: 0.5 cm
<b>Clay Additive:</b> None
<b>Firnis / Clay Colour:</b> NCS S 9000-N / NCS S 1070-Y20R
<b>Description:</b> The handle has a round shape, which was shaped by hand and added to the body later. It has a light brick-coloured paste and black glaze on the outer surface and inside of the body. The handle is slightly upturned on the body and there are chips on the glaze.
<b>Date:</b> Second half of the 6th century BC
<b>Similar:</b> Blegen/Palmer/Young 1964, pl. 93, no. 250; Moore/Philippides/Von Bothmer 1986, pl. 111, 114, 117, no. 1697, 1700, 1783, 1825; Brownlee 1989, pl. 69, no. 122; Coşkun 1999, kn. 25, 48.



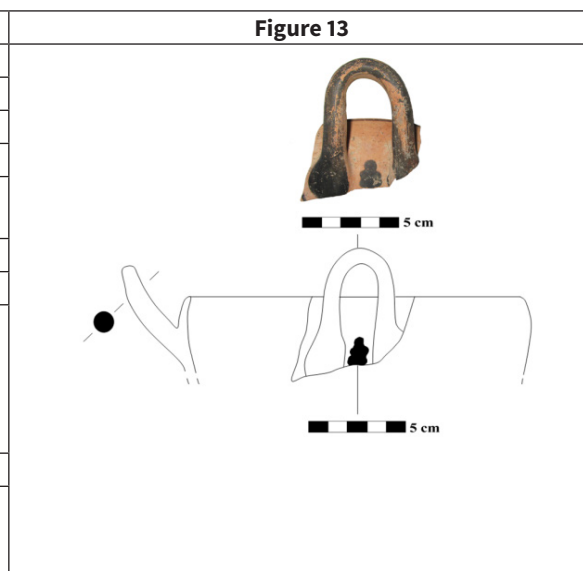
<b>Cat. No: 11</b>
<b>Excavation No:</b> ÇK-11
<b>Name of the work:</b> Kylix Fragment
<b>Cooking Condition:</b> Well Cooked
<b>Found Location:</b> Trench no. I / - 2,80 m
<b>Dimensions:</b> Measurable Length: 7.4 cm, Handle Thickness: 1.1 cm
<b>Clay Additive:</b> Fine Sand Added
<b>Firnis / Clay Colour:</b> NCS S 9000-N / NCS S 2050-Y20R
<b>Description:</b> The handle has a round shape, which was shaped by hand and added to the body later. It has a light brick-coloured paste and a black glaze on the outer surface. The handle is upturned on the body and there are extensive spills on the glaze.
<b>Date:</b> Second half of the 6th century BC
<b>Similar:</b> Blegen/Palmer/Young 1964, pl. 93, no. 250; Moore/Philippides/Von Bothmer 1986, pl. 111, 114, 117, no. 1697, 1700, 1783, 1825; Brownlee 1989, pl. 69, no. 122; Coşkun 1999, kn. 25, 48.



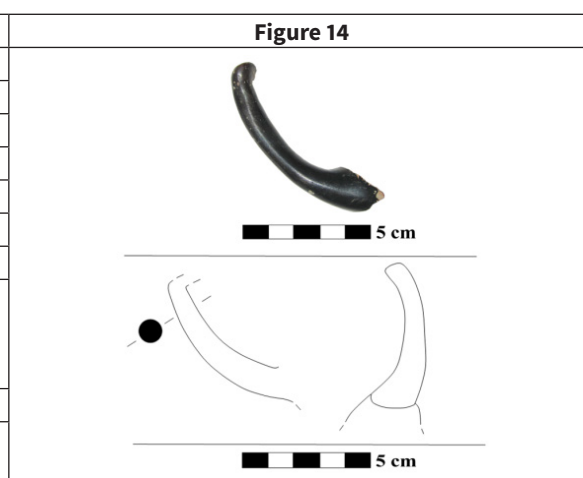
<b>Cat. No: 12</b>
<b>Excavation No:</b> ÇK-12
<b>Name of the work:</b> Kylix Fragment
<b>Cooking Condition:</b> Well Cooked
<b>Found Location:</b> Trench no. I / - 2,80 m
<b>Dimensions:</b> Measurable Length: 3.7 cm - Thickness: 0.8 cm
<b>Clay Additive:</b> Fine Sand Added
<b>Firnis / Clay Colour:</b> NCS S 9000-N / NCS S 2050-Y20R
<b>Description:</b> The handle has an oval shape that was shaped by hand and added later. It has a light brick-coloured paste and a black glaze on the outer surface. The handle is upturned on the body and there are extensive spills on the glaze.
<b>Date:</b> Second half of the 6th century BC
<b>Similar:</b> Blegen/Palmer/Young 1964, pl. 93, no. 250; Moore/Philippides/Von Bothmer 1986, pl. 111, 114, 117, no. 1697, 1700, 1783, 1825; Brownlee 1989, pl. 69, no. 122; Coşkun 1999, kn. 25, 48.



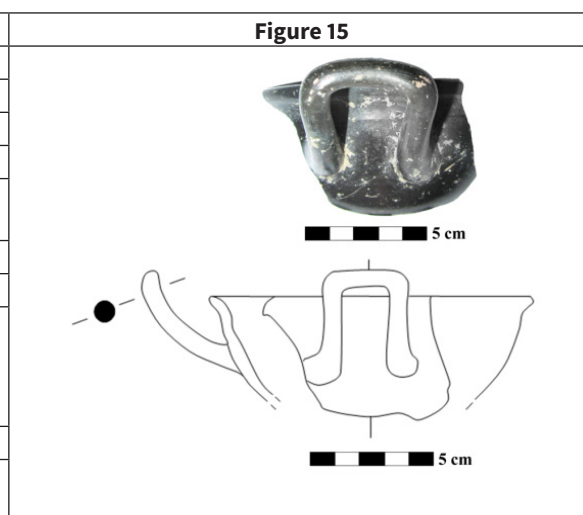
<b>Cat. No: 13</b>
<b>Excavation No:</b> ÇK-13
<b>Name of the work:</b> Kylix Fragment
<b>Cooking Condition:</b> Well Cooked
<b>Found Location:</b> Trench no. III / - 3 m
<b>Dimensions:</b> Mouth Diameter: 20 cm – Measurable Length: 7.5 cm – Thickness: 0.8 cm
<b>Clay Additive:</b> Fine Sand Added
<b>Firnis / Clay Colour:</b> NCS S 9000-N / NCS S 2050-Y30R
<b>Description:</b> The handle has an oval shape that was shaped by hand and added later. It has a light brick-coloured paste, a black glaze on the outer surface, thin walls, an inverted rim, and a flat body. There is a palmette motif embroidered with a black glaze between the handles. The handle is upturned on the body and there are extensive spills on the glaze.
<b>Date:</b> Second half of the 6th century BC
<b>Similar:</b> Blegen/Palmer/Young 1964, pl. 93, no. 250; Moore/Philippides/Von Bothmer 1986, pl. 111, 114, 117, no. 1697, 1700, 1783, 1825; Brownlee 1989, pl. 69, no. 122; Coşkun 1999, kn. 25, 48.



<b>Cat. No: 14</b>
<b>Excavation No:</b> ÇK-14
<b>Name of the work:</b> Kylix Fragment
<b>Cooking Condition:</b> Well Cooked
<b>Found Location:</b> Trench no. I / - 1,50 m
<b>Dimensions:</b> Measurable Length: 6.9 cm – Handle Thickness: 0.9 cm
<b>Clay Additive:</b> None
<b>Firnis / Clay Colour:</b> NCS S 9000-N / NCS S 2050-Y20R
<b>Description:</b> The handle has an angular form that was shaped by hand and added later. It has a light brick-colored paste and black glaze on the inner and outer surfaces. The handle is upturned on the body.
<b>Date:</b> First quarter of the 5th century BC
<b>Similar:</b> Sparkes/Talcott 1970, fig. 4, no 413; Coşkun 1999, kn. 25; Yıldız 2017, kn. 2-5; Kurap 2020, kn. 1-8.



<b>Cat. No: 15</b>
<b>Excavation No:</b> ÇK-15
<b>Name of the work:</b> Kylix Fragment
<b>Cooking Condition:</b> Well Cooked
<b>Found Location:</b> Trench no. III / - 2,80 m
<b>Dimensions:</b> Mouth Diameter: 19 cm – Measurable Height: 6.7 cm – Handle Thickness: 0.8 cm
<b>Clay Additive:</b> None
<b>Firnis / Clay Colour:</b> NCS S 9000-N / NCS S 2050-Y20R
<b>Description:</b> The handle has an angular form that was shaped by hand and added later. It has a light brick-coloured paste, black glaze on the inner and outer surfaces, thin walls, an everted rim, and a flat body. The handle is upturned on the body.
<b>Date:</b> First quarter of the 5th century BC
<b>Similar:</b> Sparkes/Talcott 1970, fig. 4, no 413; Coşkun 1999, kn. 25; Yıldız 2017, kn. 2-5; Kurap 2020, kn. 1-8.

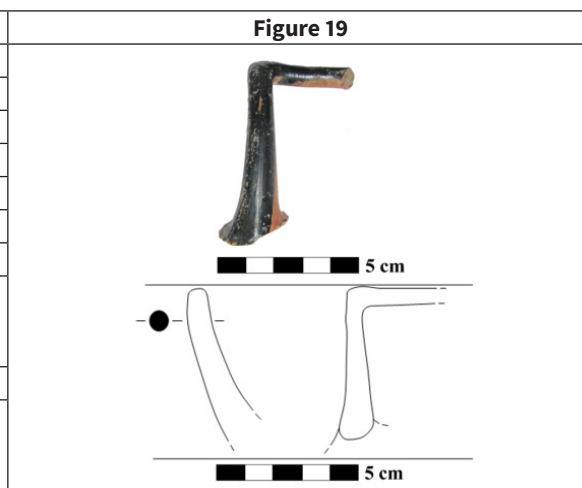


<b>Cat. No:</b> 16	<p><b>Figure 16</b></p>
<b>Excavation No:</b> ÇK-16	
<b>Name of the work:</b> Kylix Fragment	
<b>Cooking Condition:</b> Well Cooked	
<b>Found Location:</b> Trench no. I / - 2,80 m	
<b>Dimensions:</b> Measurable Length: 16 cm – Handle Thickness: 1.1 cm	
<b>Clay Additive:</b> Fine Sand Added	
<b>Firnis / Clay Colour:</b> NCS S 9000-N / NCS S 2050-Y30R	
<b>Description:</b> The handle has a round shape, which was shaped by hand and added later. It has a light brick-coloured paste and a black glaze on the outer surface. The handle is upturned on the body.	
<b>Date:</b> Second half of the 6th century BC	
<b>Similar:</b> Blegen/Palmer/Young 1964, pl. 93, no. 250; Moore/Philippides/Von Bothmer 1986, pl. 111, 114, 117, no. 1697, 1700, 1783, 1825; Brownlee 1989, pl. 69, no. 122; Coşkun 1999, kn. 25, 48.	

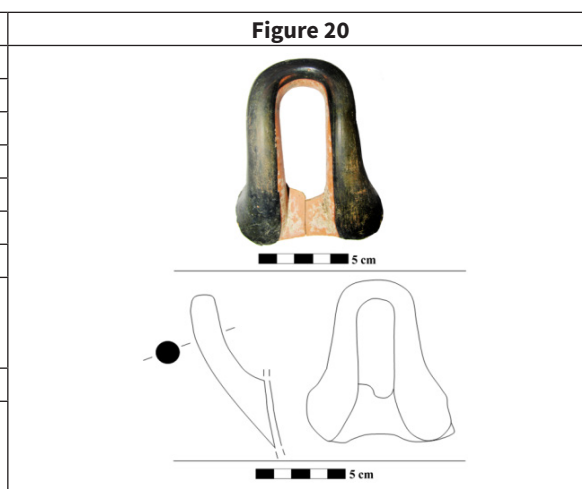
<b>Cat. No:</b> 17	<p><b>Figure 17</b></p>
<b>Excavation No:</b> ÇK-17	
<b>Name of the work:</b> Kylix Fragment	
<b>Cooking Condition:</b> Well Cooked	
<b>Found Location:</b> Trench no. III / - 2,80 m	
<b>Dimensions:</b> Mouth Diameter: 10 cm – Measurable Height: 16.5 cm – Handle Thickness: 0.8 cm	
<b>Clay Additive:</b> Fine Sand Added	
<b>Firnis / Clay Colour:</b> NCS S 9000-N / NCS S 1080-Y30R	
<b>Description:</b> The handle has an angular form that was shaped by hand and added later. It has a light brick-coloured paste, black glaze on the inner and outer surfaces, thin walls, an everted rim, and a wide body. The handle is upturned on the body.	
<b>Date:</b> First quarter of the 5th century BC	
<b>Similar:</b> Sparkes/Talcott 1970, fig. 4, no 413; Coşkun 1999, kn. 25; Yıldız 2017, kn. 2-5; Kurap 2020, kn. 1-8.	

<b>Cat. No:</b> 18	<p><b>Figure 18</b></p>
<b>Excavation No:</b> ÇK-18	
<b>Name of the work:</b> Kylix Fragment	
<b>Cooking Condition:</b> Well Cooked	
<b>Found Location:</b> Trench no. I / - 1,50 m	
<b>Dimensions:</b> Measurable Length: 6.5 cm – Handle Thickness: 0.8 cm	
<b>Clay Additive:</b> Fine Sand Added	
<b>Firnis / Clay Colour:</b> NCS S 9000-N / NCS S 1080-Y30R	
<b>Description:</b> The handle has an angular form that was shaped by hand and added later. It has a light brick-coloured paste and black glaze on the inner and outer surfaces. The handle is upturned on the body.	
<b>Date:</b> First quarter of the 5th century BC	
<b>Similar:</b> Sparkes/Talcott 1970, fig. 4, no 413; Coşkun 1999, kn. 25; Yıldız 2017, kn. 2-5; Kurap 2020, kn. 1-8.	

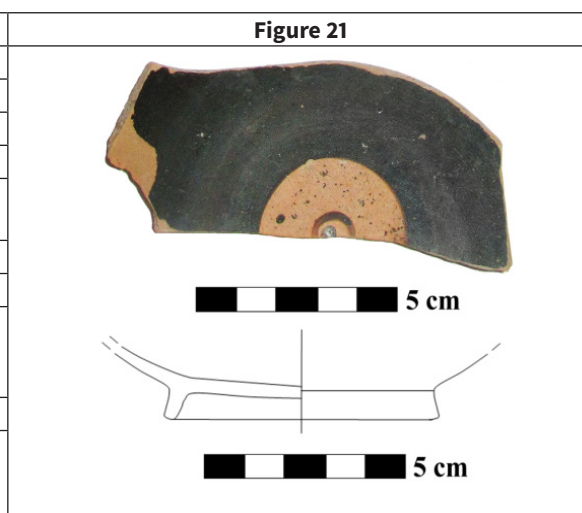
<b>Cat. No: 19</b>
<b>Excavation No:</b> ÇK-19
<b>Name of the work:</b> Kylix Fragment
<b>Cooking Condition:</b> Well Cooked
<b>Found Location:</b> Trench no. I / - 1,50 m
<b>Dimensions:</b> Measurable Length: 6.2 cm – Handle Thickness: 1 cm
<b>Clay Additive:</b> Fine Sand Added
<b>Firnis / Clay Colour:</b> NCS S 9000-N / NCS S 1060-Y30R
<b>Description:</b> The handle has an angular form that was shaped by hand and added later. It has a light brick-coloured paste and a black glaze on the outer surface. The handle is upturned on the body.
<b>Date:</b> First quarter of the 5th century BC
<b>Similar:</b> Sparkes/Talcott 1970, fig. 4, no 413; Coşkun 1999, kn. 25; Yıldız 2017, kn. 2-5; Kurap 2020, kn. 1-8.



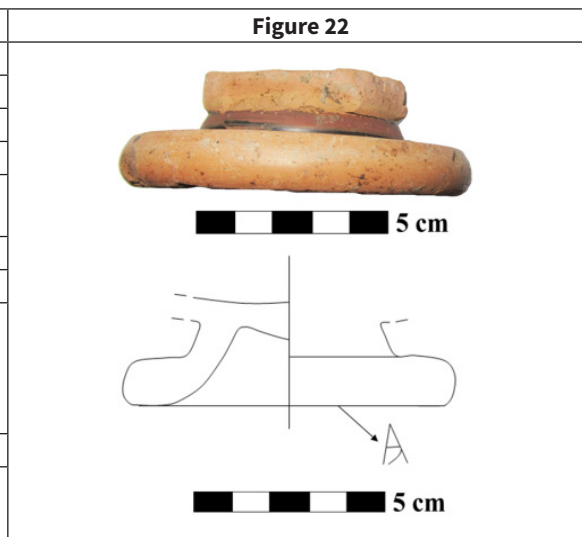
<b>Cat. No: 20</b>
<b>Excavation No:</b> ÇK-20
<b>Name of the work:</b> Kylix Fragment
<b>Cooking Condition:</b> Well Cooked
<b>Found Location:</b> Trench no. I / - 2,80 m
<b>Dimensions:</b> Measurable Length: 9.2 cm – Thickness: 1.4 cm
<b>Clay Additive:</b> None
<b>Firnis / Clay Colour:</b> NCS S 9000-N / NCS S 1080-Y30R
<b>Description:</b> The handle has a round shape, which was shaped by hand and added later. It has a light brick-coloured paste and a black glaze on the outer surface. The handle is upturned on the body.
<b>Date:</b> Second half of the 6th century BC
<b>Similar:</b> Blegen/Palmer/Young 1964, pl. 93, no. 250; Moore/Philippides/Von Bothmer 1986, pl. 111, 114, 117, no. 1697, 1700, 1783, 1825; Brownlee 1989, pl. 69, no. 122; Coşkun 1999, kn. 25, 48.



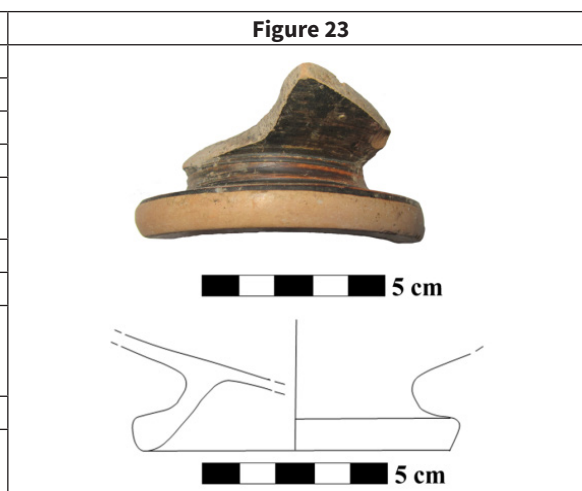
<b>Cat. No: 21</b>
<b>Excavation No:</b> ÇK-21
<b>Name of the work:</b> Kylix Fragment
<b>Cooking Condition:</b> Well Cooked
<b>Found Location:</b> Trench no. III / - 2,80 m
<b>Dimensions:</b> Mouth Diameter: 7 cm – Measurable Height: 2.8 cm – Thickness: 0.3 cm
<b>Clay Additive:</b> None
<b>Firnis / Clay Colour:</b> NCS S 9000-N / NCS S 2040-Y40R
<b>Description:</b> Making on the wheel. It has a light brick-coloured paste, black glaze on the inner and outer surfaces, thin walls, and a ring base.
<b>Date:</b> First half of the 5th century BC
<b>Similar:</b> Sparkes/Talcott 1970, fig. 5, no 471; Moore/Philippides/Von Bothmer 1986, pl. 107, no. 1657; Coşkun 1999, kn. 53; Kurap 2020, kn. 1-8.



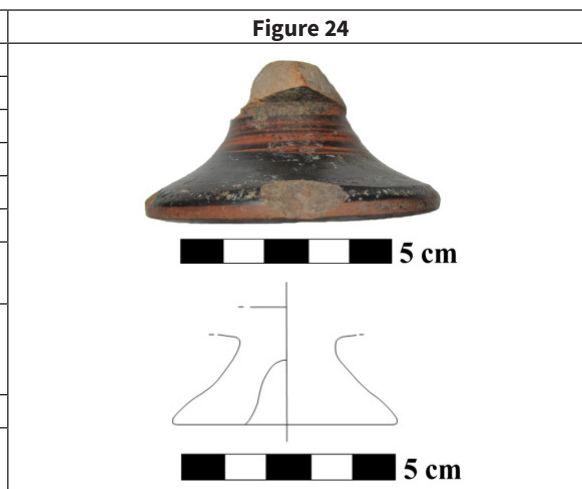
<b>Cat. No: 22</b>
<b>Excavation No:</b> ÇK-22
<b>Name of the work:</b> Kylix Fragment
<b>Cooking Condition:</b> Well Cooked
<b>Found Location:</b> Trench no. I / - 2,80 m
<b>Dimensions:</b> Pedestal Diameter: 8 cm – Measurable Height: 2.2 cm – Pedestal Thickness: 0.9 cm
<b>Clay Additive:</b> None
<b>Firnis / Clay Colour:</b> NCS S 9000-N / NCS S 2040-Y40R
<b>Description:</b> Making on the wheel. It has a light brick-coloured paste, black glazing on the inside of the base, high legs, and a wide ring base projecting outwards. There is a manufacturer's signature "A" under the base.
<b>Date:</b> Second half of the 6th century BC
<b>Similar:</b> Moore/Philippides/Von Bothmer 1986, pl. 114, no. 1783-1784; Özer 1998, kn. 20-21, şek. 3/20-21; Coşkun 1999, kn. 26.



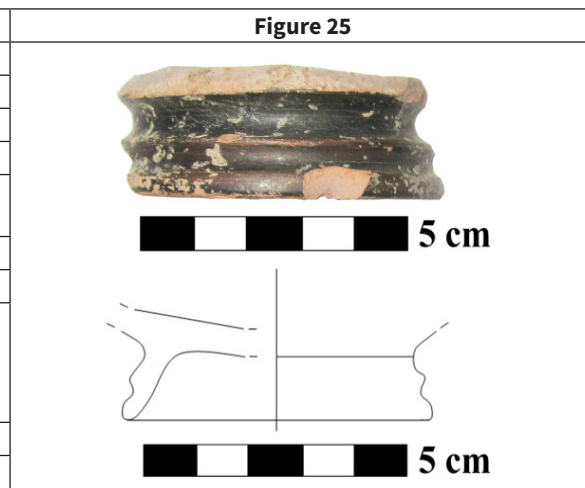
<b>Cat. No: 23</b>
<b>Excavation No:</b> ÇK-23
<b>Name of the work:</b> Kylix Fragment
<b>Cooking Condition:</b> Well Cooked
<b>Found Location:</b> Trench no. I / - 2,80 m
<b>Dimensions:</b> Pedestal Diameter: 8 cm – Measurable Height: 3 cm – Pedestal Thickness: 0.4 cm
<b>Clay Additive:</b> None
<b>Firnis / Clay Colour:</b> NCS S 9000-N / NCS S 2040-Y30R
<b>Description:</b> Making on the wheel. It has brick-coloured paste, black glaze on the inside and outside, thin walls, high legs, and a wide ring base projecting outwards.
<b>Date:</b> Second half of the 6th century BC
<b>Similar:</b> Özer 1998, kn. 20-21, şek. 3/20-21; Coşkun 1999, kn. 26.



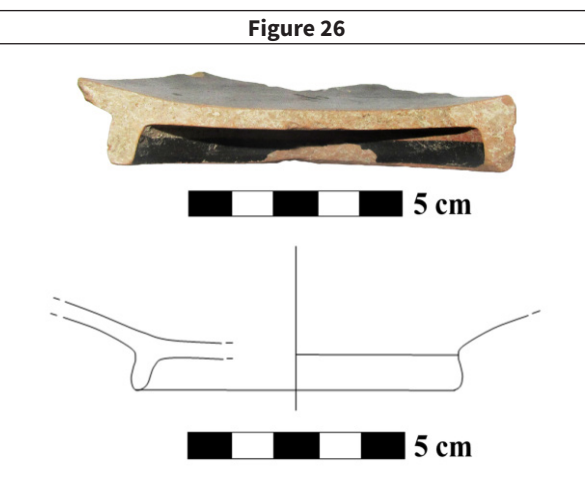
<b>Cat. No: 24</b>
<b>Excavation No:</b> ÇK-24
<b>Name of the work:</b> Kylix Fragment
<b>Cooking Condition:</b> Well Cooked
<b>Found Location:</b> Trench no. III / - 3 m
<b>Dimensions:</b> Pedestal Diameter: 5.3 cm – Measurable Height: 3 cm
<b>Clay Additive:</b> Fine Sand Added
<b>Firnis / Clay Colour:</b> NCS S 9000-N – NCS S 2075-Y60R / NCS S 1080-Y30R
<b>Description:</b> Making on the wheel. It has a light brick-coloured paste and a black and brown glaze on the outer surface. It has a funnel-shaped, everted base.
<b>Date:</b> Second half of the 6th century BC
<b>Similar:</b> Moore/Philippides/Von Bothmer 1986, pl. 119, no. 1678; Dominguez 1999, fig. 4; Coşkun 1999, kn. 22.



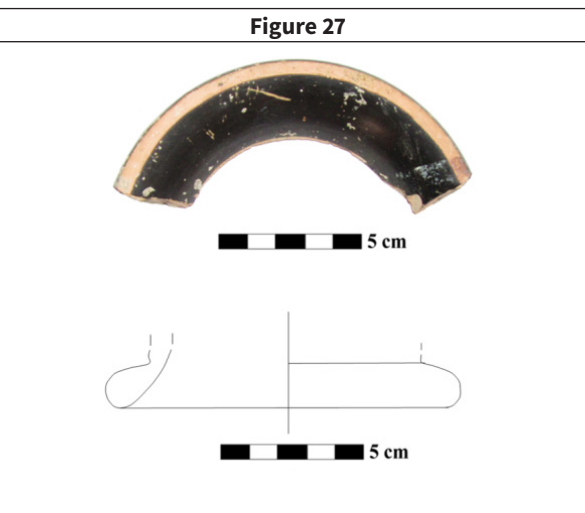
<b>Cat. No: 25</b>
<b>Excavation No:</b> ÇK-25
<b>Name of the work:</b> Kylix Fragment
<b>Cooking Condition:</b> Well Cooked
<b>Found Location:</b> Trench no. I / - 2,80 m
<b>Dimensions:</b> Pedestal Diameter: 6 cm – Measurable Height: 2.1 cm – Pedestal Thickness: 0.5 cm
<b>Clay Additive:</b> None
<b>Firnis / Clay Colour:</b> NCS S 9000-N / NCS S 2040-Y40R
<b>Description:</b> Making on the wheel. It has a light brick-coloured paste, black glaze on the inner and outer surfaces, and a high ring base with two protruding nodes. There are two intertwined spiral rings made of black glaze under the base.
<b>Date:</b> Second half of the 6th century BC
<b>Similar:</b> Sparkes/Talcott 1970, fig. 5, no 469.



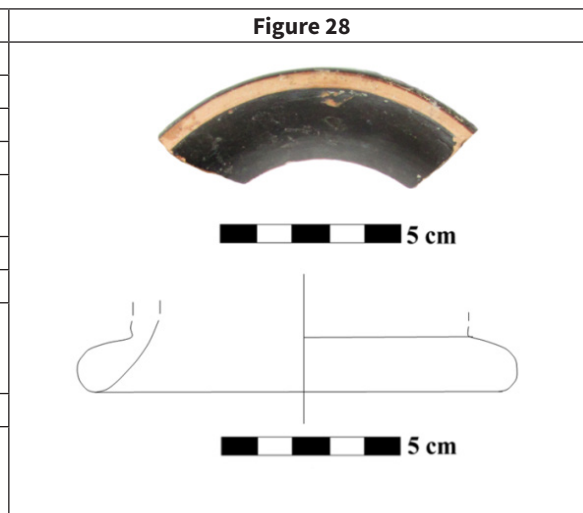
<b>Cat. No: 26</b>
<b>Excavation No:</b> ÇK-26
<b>Name of the work:</b> Kylix Fragment
<b>Cooking Condition:</b> Well Cooked
<b>Found Location:</b> Trench no. III / - 2,80 m
<b>Dimensions:</b> Pedestal Diameter: 7 cm – Measurable Height: 1.9 cm – Body Thickness: 0.3 cm
<b>Clay Additive:</b> Fine Sand Added
<b>Firnis / Clay Colour:</b> NCS S 9000-N / NCS S 2040-Y40R
<b>Description:</b> Making on the wheel. It has a light brick-coloured paste, black glaze on the inside and outside, thin walls, a flat body, and a ring base.
<b>Date:</b> First half of the 5th century BC
<b>Similar:</b> Moore/Philippides/Von Bothmer 1986, pl. 107, no. 1657; Coşkun 1999, kn. 53; Kurap 2020, kn. 1-8.



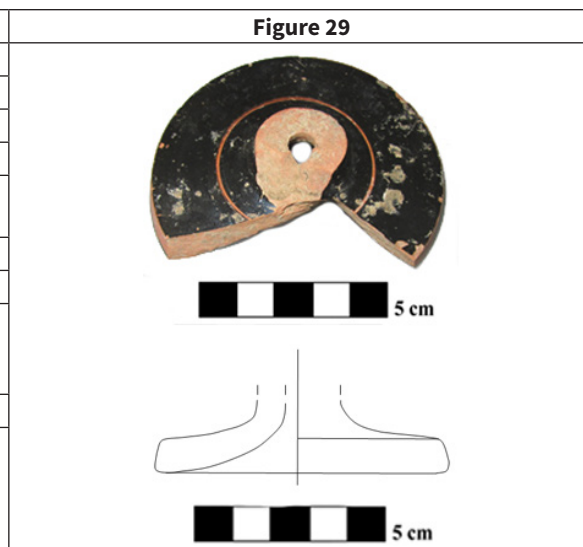
<b>Cat. No: 27</b>
<b>Excavation No:</b> ÇK-27
<b>Name of the work:</b> Kylix Fragment
<b>Cooking Condition:</b> Well Cooked
<b>Found Location:</b> Trench no. III / - 3 m
<b>Dimensions:</b> Pedestal Diameter: 12 cm – Measurable Height: 2 cm – Pedestal Thickness: 1.3 cm
<b>Clay Additive:</b> Fine Sand Added
<b>Firnis / Clay Colour:</b> NCS S 9000-N / NCS S 2040-Y40R
<b>Description:</b> Making on the wheel. It has a light brick-coloured paste, black glaze on the inside and outside, thick walls, high legs, and a ring base projecting outward.
<b>Date:</b> Second half of the 6th century BC
<b>Similar:</b> Sparkes/Talcott 1970, fig. 4, no 401; Moore/Philippides/Von Bothmer 1986, pl. 114, no. 1783-1784; Özer 1998, kn. 20-21, şek. 3/20-21; Coşkun 1999, kn. 26.



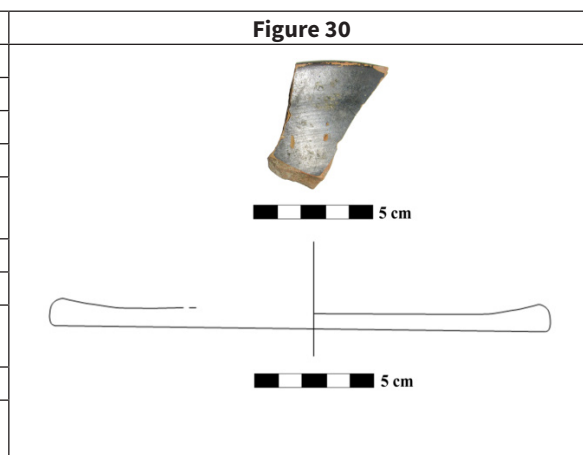
<b>Cat. No: 28</b>
<b>Excavation No:</b> ÇK-28
<b>Name of the work:</b> Kylix Fragment
<b>Cooking Condition:</b> Well Cooked
<b>Found Location:</b> Trench no. III / - 3 m
<b>Dimensions:</b> Pedestal Diameter: 12 cm – Measurable Height: 2 cm – Pedestal Thickness: 1.3 cm
<b>Clay Additive:</b> Fine Sand Added
<b>Firnis / Clay Colour:</b> NCS S 9000-N / NCS S 2040-Y40R
<b>Description:</b> Making on the wheel. It has light brick-coloured paste, black glaze on the inside and outside, thick walls, high legs, and an everted ring base.
<b>Date:</b> Second half of the 6th century BC
<b>Similar:</b> Sparkes/Talcott 1970, fig. 4, no 401; Moore/Philippides/Von Bothmer 1986, pl. 114, no. 1783-1784; Özer 1998, kn. 20-21, şek. 3/20-21; Coşkun 1999, kn. 26.



<b>Cat. No: 29</b>
<b>Excavation No:</b> ÇK-29
<b>Name of the work:</b> Kylix Fragment
<b>Cooking Condition:</b> Well Cooked
<b>Found Location:</b> Trench no. I / - 2,80 m
<b>Dimensions:</b> Pedestal Diameter: 8 cm – Measurable Height: 2.2 cm – Pedestal Thickness: 0.8 cm
<b>Clay Additive:</b> None
<b>Firnis / Clay Colour:</b> NCS S 9000-N / NCS S 2040-Y40R
<b>Description:</b> Making on the wheel. It has brick-coloured paste, black glaze on the inner and outer surfaces, thick walls, and a flat, outwardly slanting ring base.
<b>Date:</b> Second half of the 6th century BC
<b>Similar:</b> Sparkes/Talcott 1970, fig. 4, no 401; Moore/Philippides/Von Bothmer 1986, pl. 111, 113, no. 1697-1700, 1780; Özer 1998, kn. 20-21, şek. 3/20-21; Coşkun 1999, kn. 26; Kurap 2020, kn. 1-8.



<b>Cat. No: 30</b>
<b>Excavation No:</b> ÇK-30
<b>Name of the work:</b> Kylix Fragment
<b>Cooking Condition:</b> Well Cooked
<b>Found Location:</b> Trench no. I / - 2,80 m
<b>Dimensions:</b> Pedestal Diameter: 20 cm – Measurable Length: 1.1 cm Pedestal Thickness: 1.1 cm
<b>Clay Additive:</b> None
<b>Firnis / Clay Colour:</b> NCS S 9000-N / NCS S 2050-Y20R
<b>Description:</b> Making on the wheel. It has brick-colored paste, black glaze on the inner and outer surfaces, thin walls, and a flat base.
<b>Date:</b> Second half of the 6th century BC
<b>Similar:</b> Moore/Philippides/Von Bothmer 1986, pl. 107, no. 1657; Coşkun 1999, kn. 53; Kurap 2020, kn. 1-8.

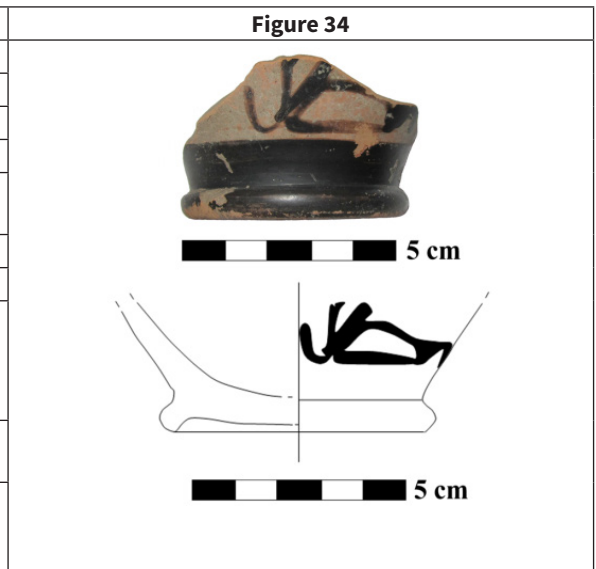


<b>Cat. No: 31</b>	<b>Figure 31</b>
<b>Excavation No:</b> ÇK-31	
<b>Name of the work:</b> Skyphos Fragment	
<b>Cooking Condition:</b> Well Cooked	
<b>Found Location:</b> Trench no. I / - 2,50 m	
<b>Dimensions:</b> Mouth Diameter: 10 cm – Measurable Length: 4.5 cm – Thickness: 0.8 cm	
<b>Clay Additive:</b> Fine Sand Added	
<b>Firnis / Clay Colour:</b> NCS S 9000-N / NCS S 1020-Y40R	
<b>Description:</b> The handle has a round shape, which was shaped by hand and added later. It has a light brick-coloured paste, black glaze on the inner and outer surfaces, thin walls, a flat rim, and a wide body. The handle is placed horizontally on the body.	
<b>Date:</b> First half of the 5th century BC	
<b>Similar:</b> Corbett 1949, pl. 85, no. 20, 24, 27; Sparkes/Talcott 1970, fig. 4, no 342; Brownlee 1995, l. 82, no. 235; Coşkun 1999, kn. 6–7.	

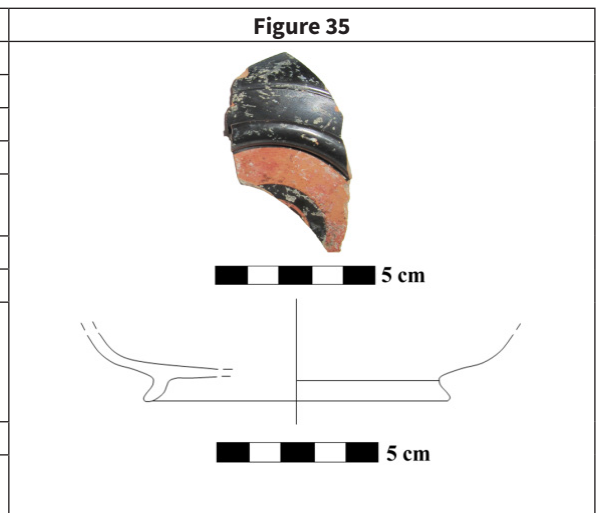
<b>Cat. No: 32</b>	<b>Figure 32</b>
<b>Excavation No:</b> ÇK-32	
<b>Name of the work:</b> Skyphos Fragment	
<b>Cooking Condition:</b> Well Cooked	
<b>Found Location:</b> Trench no. III / - 2,80 m	
<b>Dimensions:</b> Mouth Diameter: 10 cm – Measurable Length: 4 cm – Handle Thickness: 1 cm	
<b>Clay Additive:</b> Fine Sand Added	
<b>Firnis / Clay Colour:</b> NCS S 9000-N / NCS S 1020-Y40R	
<b>Description:</b> The handle has a round shape, which was shaped by hand and added later. It has a light brick-coloured paste, black glaze on the inner and outer surfaces, thin walls, a flat rim, and a wide body. The handle is placed horizontally on the body.	
<b>Date:</b> First half of the 5th century BC	
<b>Similar:</b> Corbett 1949, pl. 85, no. 20, 24, 27; Sparkes/Talcott 1970, fig. 4, no 342; Brownlee 1995, pl. 82, no. 235; Coşkun 1999, kn. 6–7.	

<b>Cat. No: 33</b>	<b>Figure 33</b>
<b>Excavation No:</b> ÇK-33	
<b>Name of the work:</b> Skyphos Fragment	
<b>Cooking Condition:</b> Well Cooked	
<b>Found Location:</b> Trench no. I / - 2,50 m	
<b>Dimensions:</b> Mouth Diameter: 12 cm – Measurable Height: 5.2 cm – Thickness: 0.3 cm	
<b>Clay Additive:</b> Fine Sand Added	
<b>Firnis / Clay Colour:</b> NCS S 8005-Y20R / NCS S 3020-Y30R	
<b>Description:</b> Making on the wheel. It has a brick-coloured paste, black glaze on the inner and outer surfaces, thin walls, an everted rim, and a wide body. There are spills on the glaze on the body.	
<b>Date:</b> First half of the 5th century BC	
<b>Similar:</b> Moore/Philippides/Von Bothmer 1986, pl. 107, no. 1630; Brownlee 1995, pl. 82, 83, 86, no. 236, 240, 353, 356; Coşkun 1999, kn. 14–17.	

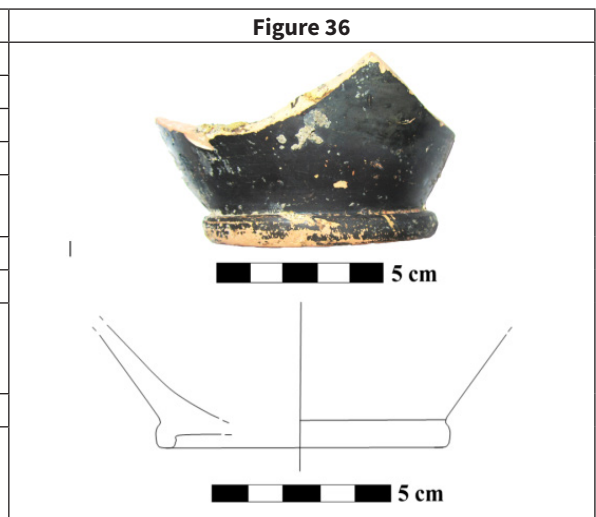
<b>Cat. No: 34</b>
<b>Excavation No:</b> ÇK-34
<b>Name of the work:</b> Skyphos Fragment
<b>Cooking Condition:</b> Well Cooked
<b>Found Location:</b> Trench no. III / - 2,80 m
<b>Dimensions:</b> Pedestal Diameter: 5.5 cm – Measurable Height: 3 cm – Body Thickness: 0.4 cm
<b>Clay Additive:</b> None
<b>Firnis / Clay Colour:</b> NCS S 9000-N / NCS S 3020-Y30R
<b>Description:</b> Making on the wheel. It has a light brick-coloured paste, a black glaze on the inside of the body and the top of the base, thick walls, and a ring base. There is a figure fragment of a stool made with the black figure technique on the body.
<b>Date:</b> Fourth quarter of the 6th century BC – first quarter of the 5th century BC
<b>Similar:</b> Moore/Philippides/Von Bothmer 1986, pl. 107, no. 1628; Brownlee 1995, pl. 87, no. 260; Coşkun 1999, kn. 14-17; Şirin 2020, res. 55.



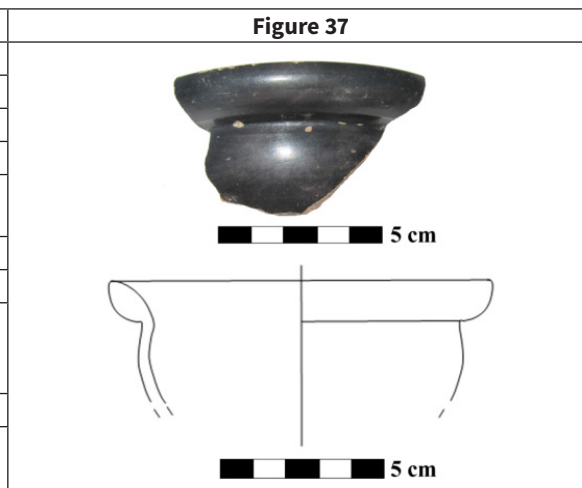
<b>Cat. No: 35</b>
<b>Excavation No:</b> ÇK-35
<b>Name of the work:</b> Skyphos Fragment
<b>Cooking Condition:</b> Well Cooked
<b>Found Location:</b> Trench no. III / - 2,80 m
<b>Dimensions:</b> Pedestal Diameter: 9 cm – Measurable Height: 2.9 cm – Thickness: 0.3 cm
<b>Clay Additive:</b> None
<b>Firnis / Clay Colour:</b> NCS S 9000-N / NCS S 1080-Y40R
<b>Description:</b> Making on the wheel. It has brick-coloured paste, black glaze on the inner and outer surfaces, thin walls, a wide body, and a ring base. There are two interlocking spiral rings with black glaze under the base.
<b>Date:</b> First half of the 5th century BC
<b>Similar:</b> Blegen/Palmer/Young 1964, pl. 46, no. 320/5; Brownlee 1987, fig. 1, pl. 13; Brownlee 1995, pl. 87, no. 260; Coşkun 1999, kn. 53.



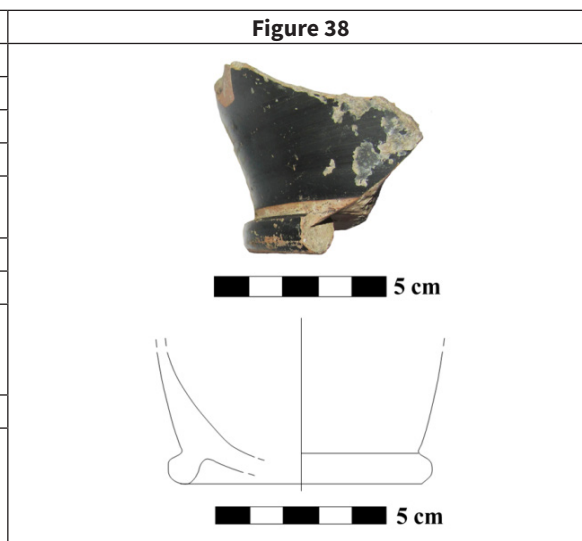
<b>Cat. No: 36</b>
<b>Excavation No:</b> ÇK-36
<b>Name of the work:</b> Skyphos Fragment
<b>Cooking Condition:</b> Well Cooked
<b>Found Location:</b> Trench no. III / - 2,80 m
<b>Dimensions:</b> Pedestal Diameter: 7.5 cm – Measurable Height: 4 cm – Body Thickness: 0.5 cm
<b>Clay Additive:</b> None
<b>Firnis / Clay Colour:</b> NCS S 9000-N / NCS S 2040-Y40R
<b>Description:</b> Making on the wheel. It has a light brick-coloured paste, black glaze on the inner and outer surfaces, thick walls, a wide body, and a ring base.
<b>Date:</b> First half of the 5th century BC
<b>Similar:</b> Blegen/Palmer/Young 1964, pl. 46, no. 320/5; Brownlee 1995, pl. 87, no. 260; Coşkun 1999, kn. 14-17.



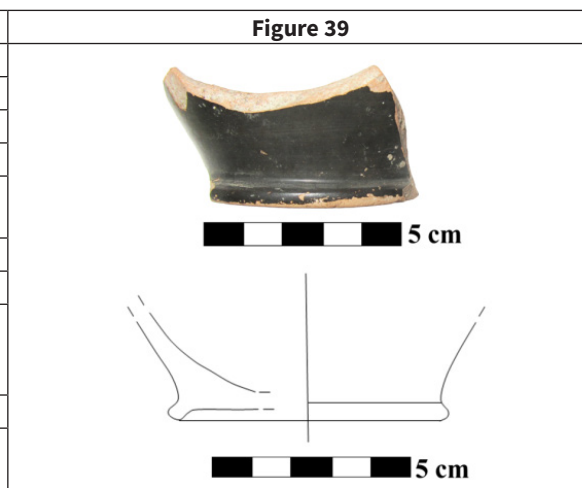
<b>Cat. No: 37</b>
<b>Excavation No:</b> ÇK-37
<b>Name of the work:</b> Skyphos Fragment
<b>Cooking Condition:</b> Well Cooked
<b>Found Location:</b> Trench no. I / - 2,50 m
<b>Dimensions:</b> Mouth Diameter: 12 cm – Measurable Height: 4 cm – Body Thickness: 0.5 cm
<b>Clay Additive:</b> None
<b>Firnis / Clay Colour:</b> NCS S 9000-N / NCS S 2040-Y40R
<b>Description:</b> Making on the wheel. It has a light brick-coloured paste, black glaze on the inner and outer surfaces, thin walls, an everted rim, and a body that narrows towards the base.
<b>Date:</b> First half of the 5th century BC
<b>Similar:</b> Sparkes/Talcott 1970, fig. 6, no 621.



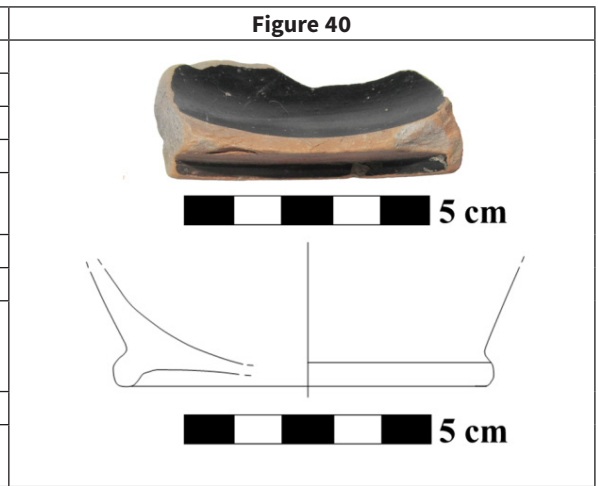
<b>Cat. No: 38</b>
<b>Excavation No:</b> ÇK-38
<b>Name of the work:</b> Skyphos Fragment
<b>Cooking Condition:</b> Well Cooked
<b>Found Location:</b> Trench no. I / - 2,50 m
<b>Dimensions:</b> Pedestal Diameter: 8.5 cm – Measurable Height: 4.5 cm – Thickness: 0.4 cm
<b>Clay Additive:</b> Fine Sand Added
<b>Firnis / Clay Colour:</b> NCS S 9000-N / NCS S 2050-Y20R
<b>Description:</b> Making on the wheel. It has a light brick-coloured paste, black glaze on the inner and outer surfaces, thick walls, a narrow body, and a ring base.
<b>Date:</b> First half of the 5th century BC
<b>Similar:</b> Moore/Philippides/Von Bothmer 1986, pl. 107, no. 1628; Brownlee 1995, pl. 87, no. 260; Coşkun 1999, kn. 14-17.



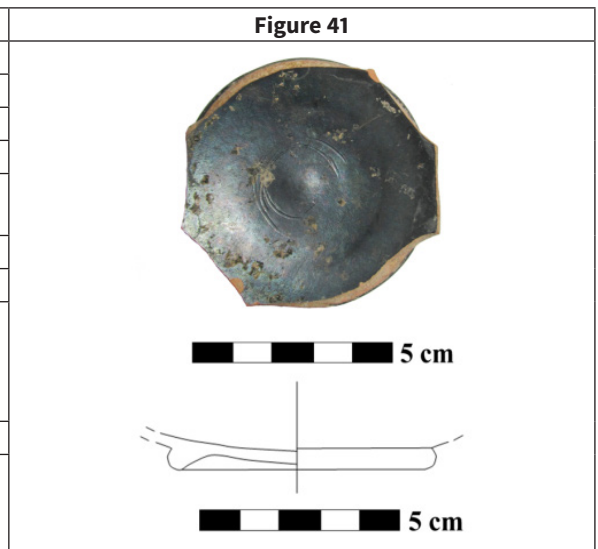
<b>Cat. No: 39</b>
<b>Excavation No:</b> ÇK-39
<b>Name of the work:</b> Skyphos Fragment
<b>Cooking Condition:</b> Well Cooked
<b>Found Location:</b> Trench no. I / - 2,50 m
<b>Dimensions:</b> Pedestal Diameter: 18 cm – Measurable Height: 3 cm – Thickness: 0.4 cm
<b>Clay Additive:</b> Fine Sand Added
<b>Firnis / Clay Colour:</b> NCS S 9000-N / NCS S 2050-Y20R
<b>Description:</b> Making on the wheel. It has a light brick-coloured paste, black glaze on the inner and outer surfaces, thick walls, a wide body, and an everted ring base.
<b>Date:</b> First half of the 5th century BC
<b>Similar:</b> Moore/Philippides/Von Bothmer 1986, pl. 107, no. 1630; Coşkun 1999, kn. 14-17.



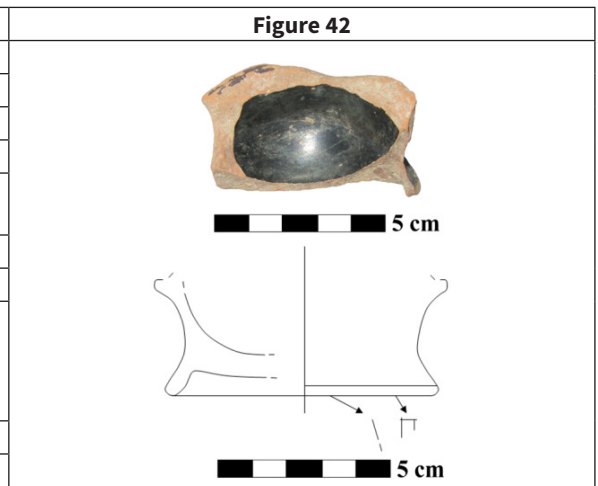
<b>Cat. No:</b> 40
<b>Excavation No:</b> ÇK-40
<b>Name of the work:</b> Skyphos Fragment
<b>Cooking Condition:</b> Well Cooked
<b>Found Location:</b> Trench no. III / - 2,80 m
<b>Dimensions:</b> Pedestal Diameter: 7 cm – Measurable Height: 2.5 cm – Body Thickness: 0.4 cm
<b>Clay Additive:</b> None
<b>Firnis / Clay Colour:</b> NCS S 9000-N / NCS S 1020-Y40R
<b>Description:</b> Making on the wheel. It has a light brick-coloured paste, black glaze on the inner and outer surfaces, thick walls, a wide body, and an everted ring base.
<b>Date:</b> First half of the 5th century BC
<b>Similar:</b> Moore/Philippides/Von Bothmer 1986, pl. 107, no. 1630; Brownlee 1995, pl. 87, no. 260; Coşkun 1999, kn. 14–17.



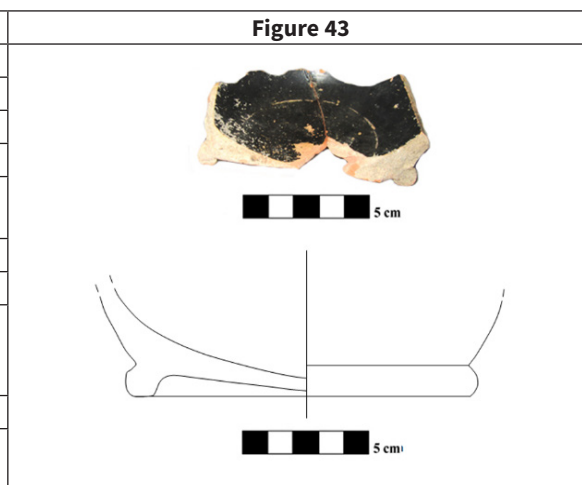
<b>Cat. No:</b> 41
<b>Excavation No:</b> ÇK-41
<b>Name of the work:</b> Skyphos Fragment
<b>Cooking Condition:</b> Well Cooked
<b>Found Location:</b> Trench no. I / - 2,50 m
<b>Dimensions:</b> Pedestal Diameter: 6.5 cm – Measurable Height: 1 cm – Thickness: 0.2 cm
<b>Clay Additive:</b> Fine Sand Added
<b>Firnis / Clay Colour:</b> NCS S 9000-N / NCS S 2040-Y40R
<b>Description:</b> Making on the wheel. It has a light brick-coloured paste, black glaze on the inside and outside, thin walls, a flat body, and a ring base. There are two spiral rings with black glaze underneath the base.
<b>Tarih:</b> First half of the 5th century BC
<b>Similar:</b> Moore/Philippides/Von Bothmer 1986, pl. 104, no. 1567; Coşkun 1999, kn. 14–17.



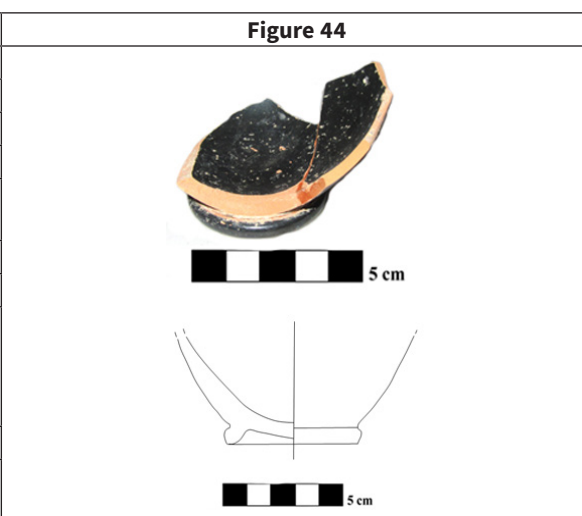
<b>Cat. No:</b> 42
<b>Excavation No:</b> ÇK-42
<b>Name of the work:</b> Skyphos Fragment
<b>Cooking Condition:</b> Well Cooked
<b>Found Location:</b> Trench no. I / - 2,50 m
<b>Dimensions:</b> Pedestal Diameter: 8 cm – Measurable Height: 3 cm – Thickness: 0.5 cm
<b>Clay Additive:</b> Fine Sand Added
<b>Firnis / Clay Colour:</b> NCS S 9000-N / NCS S 2040-Y40R
<b>Description:</b> Making on the wheel. It has a light brick-coloured paste, black glaze on the inner and outer surfaces, thick walls, a narrow body, and a ring base. There are names abbreviated as “\” and “Π” under the base.
<b>Date:</b> First half of the 5th century BC
<b>Similar:</b> Sparkes/Talcott 1970, fig. 6, no 593.



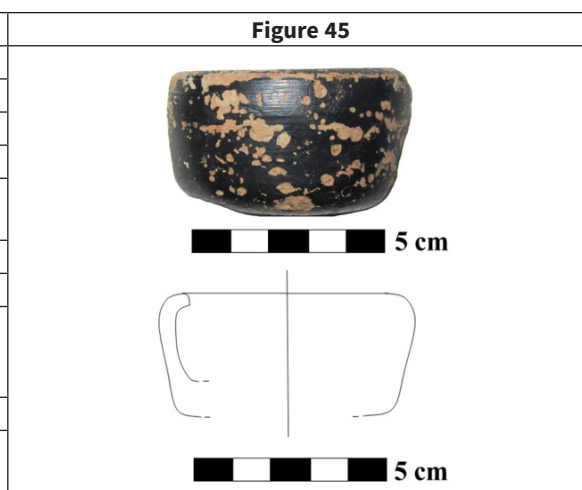
<b>Cat. No:</b> 43
<b>Excavation No:</b> ÇK-43
<b>Name of the work:</b> Skyphos Fragment
<b>Cooking Condition:</b> Well Cooked
<b>Found Location:</b> Trench no. III / - 2,80 m
<b>Dimensions:</b> Pedestal Diameter: 12 cm – Height: 4.2 cm – Thickness: 0.8 cm
<b>Clay Additive:</b> Fine Sand Added
<b>Firnis / Clay Colour:</b> NCS S 9000-N / NCS S 2050-Y20R
<b>Description:</b> Making on the wheel. It has a light brick-coloured paste, black glaze on the inner and outer surfaces, thick walls, a wide body, and a ring base.
<b>Date:</b> First half of the 5th century BC
<b>Similar:</b> Moore/Philippides/Von Bothmer 1986, pl. 107, no. 1630; Coşkun 1999, kn. 14–17.



<b>Cat. No:</b> 44
<b>Excavation No:</b> ÇK-44
<b>Name of the work:</b> Skyphos Fragment
<b>Cooking Condition:</b> Well Cooked
<b>Found Location:</b> Trench no. I / - 2,50 m
<b>Dimensions:</b> Pedestal Diameter: 5.5 cm – Measurable Height: 14.6 cm – Body Thickness: 0.5 cm
<b>Clay Additive:</b> Fine Sand Added
<b>Firnis / Clay Colour:</b> NCS S 9000-N / NCS S 2050-Y20R
<b>Description:</b> Making on the wheel. It has a light brick-coloured paste, black glaze on the inner and outer surfaces, thick walls, a narrow body, and a ring base. Under the base, there is a spiral circle made of black glaze with a dot inside.
<b>Date:</b> First half of the 5th century BC
<b>Similar:</b> Moore/Philippides/Von Bothmer 1986, pl. 107, no. 1630; Coşkun 1999, kn. 14–17.



<b>Cat. No:</b> 45
<b>Excavation No:</b> ÇK-45
<b>Name of the work:</b> Lekythos Fragment
<b>Cooking Condition:</b> Well Cooked
<b>Found Location:</b> Trench no. III / - 2,80 m
<b>Dimensions:</b> Mouth Diameter: 7 cm – Height: 3.4 cm – Thickness: 0.5 cm
<b>Clay Additive:</b> None
<b>Firnis / Clay Colour:</b> NCS S 9000-N / NCS S 2030-Y30R
<b>Description:</b> Making on the wheel. It has a light brick-coloured paste, black glaze on the inner and outer surfaces, thin walls, an inverted rim, and a cylindrical neck.
<b>Date:</b> Mid-5th century BC
<b>Similar:</b> Brownlee 1995, pl. 80, no. 222, 224; Coşkun 1999, kn. 178; Yiğit 2007, lev. 5, kn. 5; Aslan 2019, no. 1–2.



<b>Cat. No:</b> 46
<b>Excavation No:</b> ÇK-46
<b>Name of the work:</b> Lekythos Fragment
<b>Cooking Condition:</b> Well Cooked
<b>Found Location:</b> Trench no. III / - 2,80 m
<b>Dimensions:</b> Mouth Diameter: 3.8 cm – Measurable Height: 4 cm – Thickness: 0.3 cm
<b>Clay Additive:</b> None
<b>Firnis / Clay Colour:</b> NCS S 7500-N / NCS S 2040-Y40R
<b>Description:</b> Making on the wheel. It has light brick-coloured paste, black glaze on the inner and outer surfaces, thin walls, an everted rim, and a cylindrical neck. The upper part of the handle rises from the middle of the neck to the mouth.
<b>Date:</b> Mid-5th century BC
<b>Similar:</b> Moore/Philippides/Von Bothmer 1986, pl. 78, no. 861.

**Figure 46**



<b>Cat. No:</b> 47
<b>Excavation No:</b> ÇK-47
<b>Name of the work:</b> Lekythos Fragment
<b>Cooking Condition:</b> Well Cooked
<b>Found Location:</b> Trench no. III / - 2,50 m
<b>Dimensions:</b> Pedestal Diameter: 4 cm – Measurable Height: 3.6 cm – Body Thickness: 0.2 cm
<b>Clay Additive:</b> None
<b>Firnis / Clay Colour:</b> NCS S 9000-N / NCS S 0850-Y60R
<b>Description:</b> Making on the wheel. It has a light brick-coloured paste, black glaze on the inside and outside, thin walls, a narrow body, and a ring base. There is a black glazed crosshatch motif from the base to the bottom of the body.
<b>Date:</b> Fourth quarter of the 5th century BC – First quarter of the 4th century BC
<b>Similar:</b> Coşkun 1999, kn. 177; Kaba/Vural 2018, fig. 6; Öz/Abay 2022, kn. 5-8.

**Figure 47**

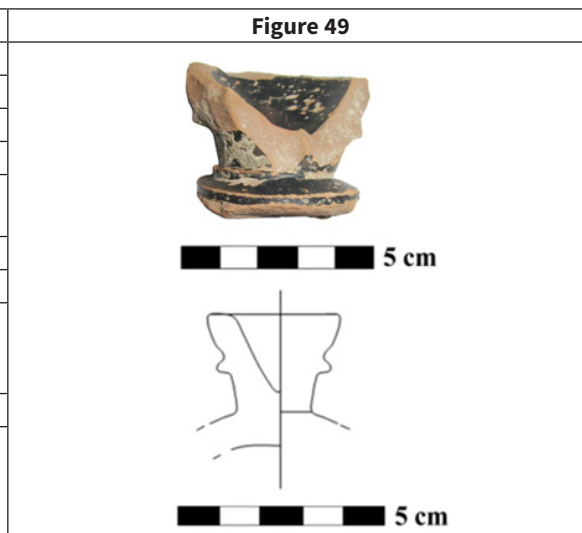


<b>Cat. No:</b> 48
<b>Excavation No:</b> ÇK-48
<b>Name of the work:</b> Lekythos Fragment
<b>Cooking Condition:</b> Well Cooked
<b>Found Location:</b> Trench no. I / - 2,50 m
<b>Dimensions:</b> Pedestal Diameter: 3.8 cm – Measurable Height: 3.8 cm – Pedestal Thickness: 0.4 cm
<b>Clay Additive:</b> None
<b>Firnis / Clay Colour:</b> NCS S 7500-N / NCS S 1070-Y50R
<b>Description:</b> Making on the wheel. It has a light brick-coloured paste, a black glaze on the outer surface, thick walls, a narrow body, and an outwardly slanting two-stage ring base.
<b>Date:</b> First half of the 5th century BC
<b>Similar:</b> Brownlee 1995, pl. 74-75, no. 191, 195-196; Coşkun 1999, kn. 174-175; Öz/Abay 2022, kn. 1-2.

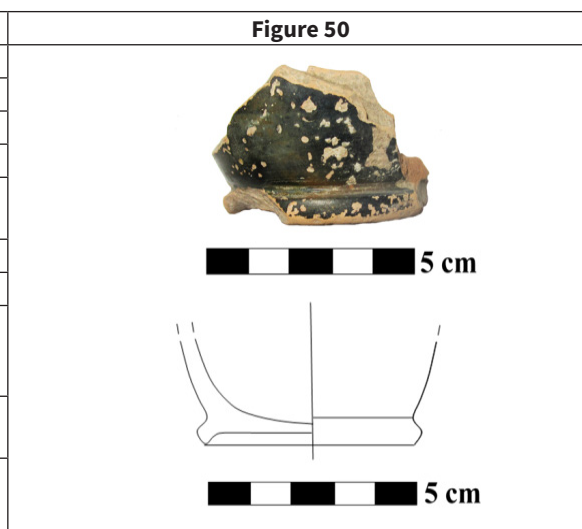
**Figure 48**

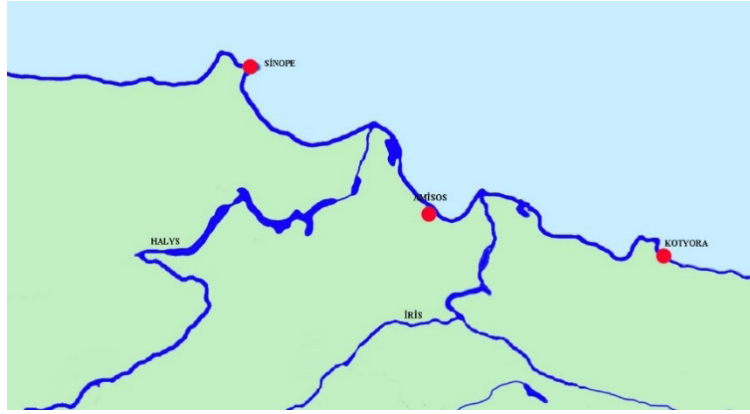


<b>Cat. No: 49</b>
<b>Excavation No:</b> ÇK-49
<b>Name of the work:</b> Lekythos Fragment
<b>Cooking Condition:</b> Well Cooked
<b>Found Location:</b> Trench no. III / - 2,80 m
<b>Dimensions:</b> Pedestal Diameter: 3 cm – Measurable Height: 3.5 cm – Pedestal Thickness: 0.6 cm
<b>Clay Additive:</b> Fine Sand Added
<b>Firnis / Clay Colour:</b> NCS S 7500-N / NCS S 1070-Y50R
<b>Description:</b> Making on the wheel. It has a light brick-coloured paste, a black glaze on the outer surface, thick walls, a narrow body, and a ring base.
<b>Date:</b> First half of the 5th century BC
<b>Similar:</b> Brownlee 1995, pl. 74-75, no. 191, 195-196; Coşkun 1999, kn. 174-175; Öz/Abay 2022, kn. 1-2.



<b>Cat. No: 50</b>
<b>Excavation No:</b> ÇK-50
<b>Name of the work:</b> Lekythos Fragment
<b>Cooking Condition:</b> Well Cooked
<b>Found Location:</b> Trench no. I / - 2,50 m
<b>Dimensions:</b> Pedestal Diameter: 4 cm – Measurable Height: 2.5 cm – Body Thickness: 0.4 cm
<b>Clay Additive:</b> None
<b>Firnis / Clay Colour:</b> NCS S 7500-N / NCS S 1070-Y50R
<b>Description:</b> Making on the wheel. It has a light brick-coloured paste, black glaze on the outer surface, thick walls, a narrow body, and an everted ring base.
<b>Date:</b> Fourth quarter of the 5th century BC – First quarter of the 4th century BC
<b>Similar:</b> Corbett 1949, pl. 81, no. 9-11; Sparkes/Talcott 1970, pl. 18, no. 1123, 1128; Coşkun 1999, kn. 177; Öz/Abay 2022, kn. 5-8.

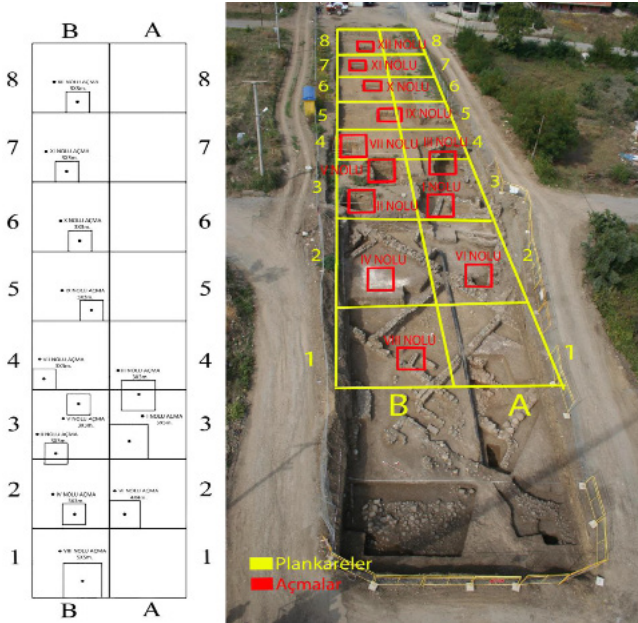




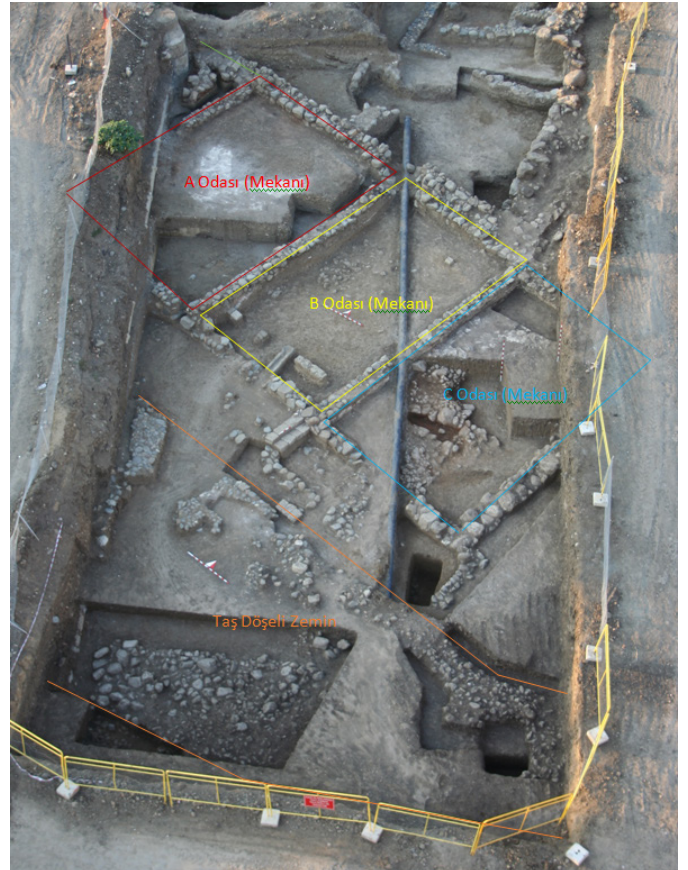
**Fig. 1.** The location of Amisos, located between Halys (Kızılırmak) and Iris (Yeşilirmak).



**Fig. 2.** Location of Çakalca-Karadoğan Mound (O. A. Şirin photo archive).



**Fig. 3.** Location of plan squares and trenches in the excavation area (Şirin/Kolağasıoğlu 2016, pl. 1).



**Fig. 4.** Foundation ruins of the building unearthed in the excavation area (O.A. Şirin photo archive).



**Fig. 5.** Statuettes of the goddess Cybele with a polos and a veiled head, unearthed in trench no. III (O.A. Şirin photo archive).



**Fig. 6.** Examples of Korean figurines unearthed in trench no. III (O.A. Şirin photo archive).



**Fig. 7.** Various headpieces of terracotta figurines unearthed in trench no. III (O.A. Şirin photo archive).



**Fig. 8.** Sheet types, base, and body parts of the terracotta figurines unearthed in trench no. III (O.A. Şirin photo archive).



**Fig. 9.** Imported black- and red-figure pottery dating to the 6th to 5th centuries BC (Şirin/Kolağasıoğlu 2016a, res. 17a).



**Fig. 10.** Imported black- and red-figure pottery fragments dating to the 6th to 5th centuries BC (O.A. Şirin photo archive).



**Fig. 11.** Ceramic fragments with graffiti found in trench no. III (Şirin/Kolağasıoğlu 2016, res. 35–36).



**Fig. 12.** Black glazed ceramic fragments belonging to various vessels unearthed in trenches I and III.



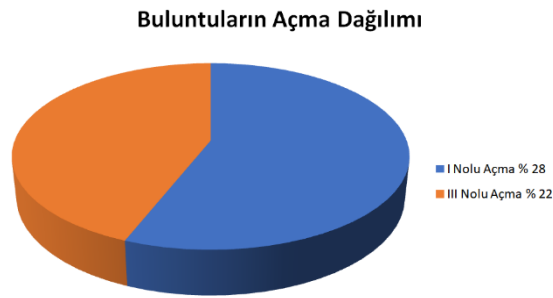
**Fig. 13.** Black glazed ceramic fragments belonging to various vessels unearthed in trenches I and III.



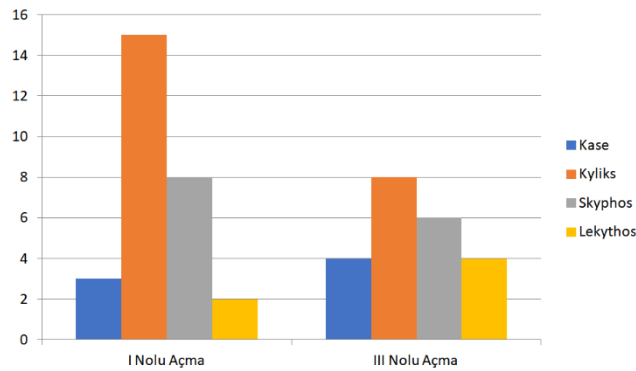
**Fig. 14.** Black glazed ceramic fragments belonging to various vessels unearthed in trenches I and III.



**Fig. 15.** Black glazed ceramic fragments belonging to various vessels unearthed in trenches I and III.



**Tab. 1.** Trench distribution of black glazed ceramic fragments found in the Çakalca-Karadoğan Mound excavation.



**Tab. 2.** Numerical distribution of black glazed ceramic fragments unearthed in the Çakalca-Karadoğan Mound excavation.